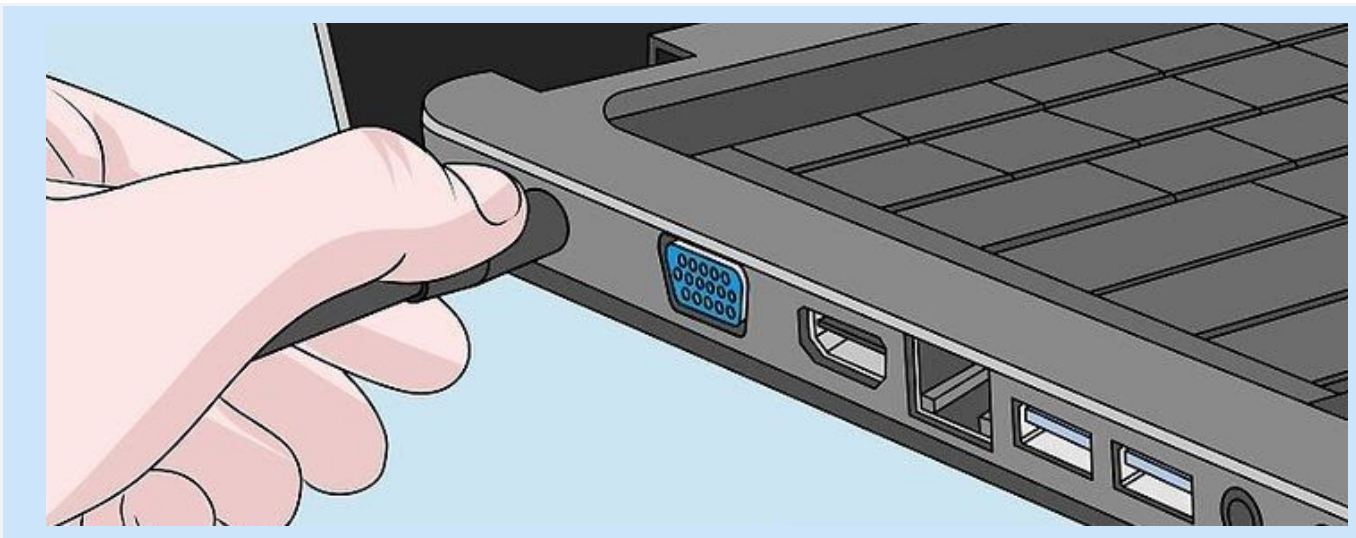
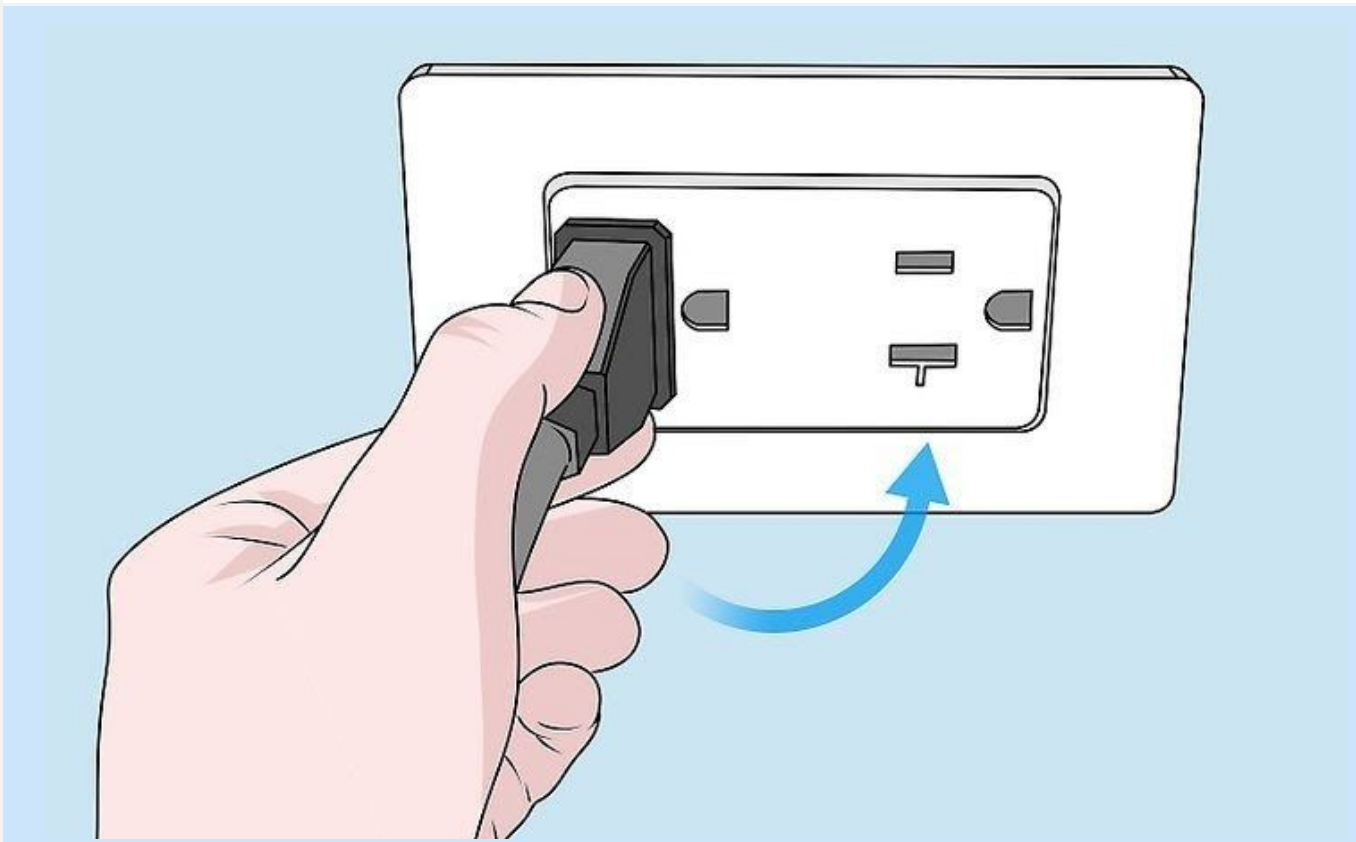


Charging of the Laptop



Connect the power adaptor to the Laptop



Plug the power adaptor to the power outlet



The Power cable to be connected to the Power Adaptor and switch On the power outlet to charge the Laptop.

1. Battery Charge LED status

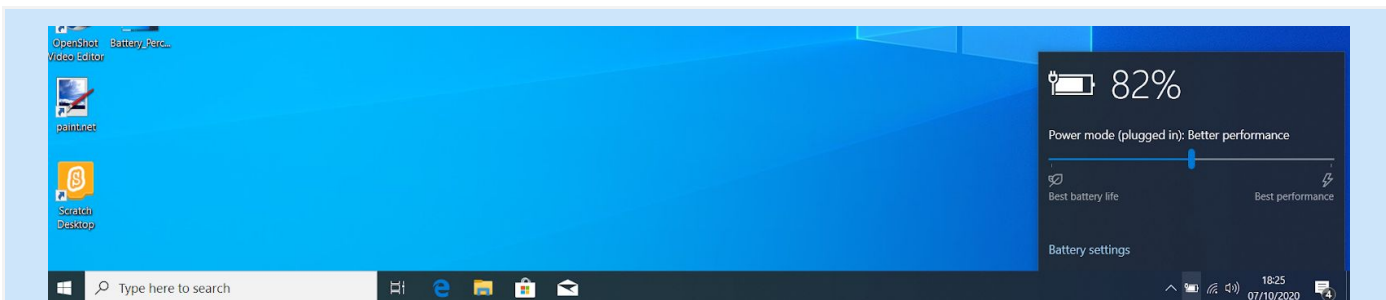


Picture 01

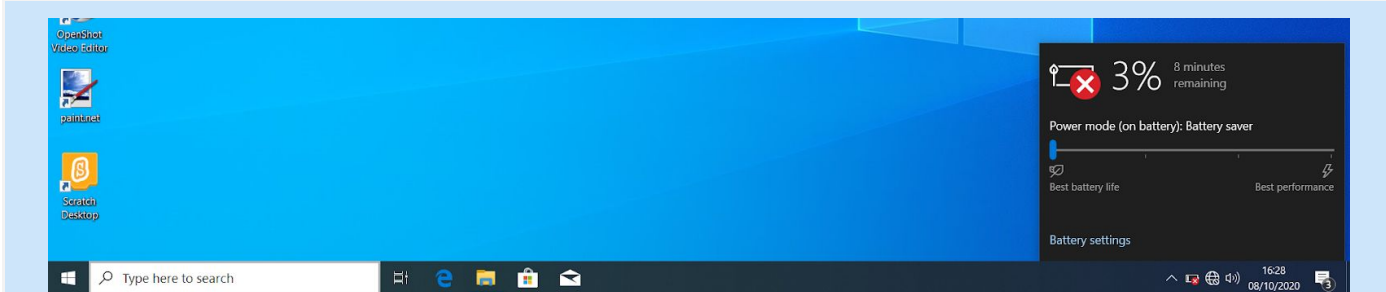
Picture 02

Picture 03

Picture 04



Desktop Notification in the scenario of Picture 01



Desktop Notification in the scenario of Picture 04

- Picture 01: When Power Adaptor is connected, LED - White: Indicates the Laptop Battery Charging is On.
- Picture 02: When Power Adaptor is connected, LED - Off: Indicates the Laptop Battery is Fully Charged.
- Picture 03: LED - Off: Indicates the Laptop Battery is sufficiently Charged.
- Picture 04: LED - Amber: Indicates the Laptop Battery is Critically Low less than 10%.



ALERT: Never charge the Laptop battery to 100%, Never continuously connect the Power adaptor to the Laptop. Never wait till the Battery drains to initiate charging.

[Back to INDEX\)](#)