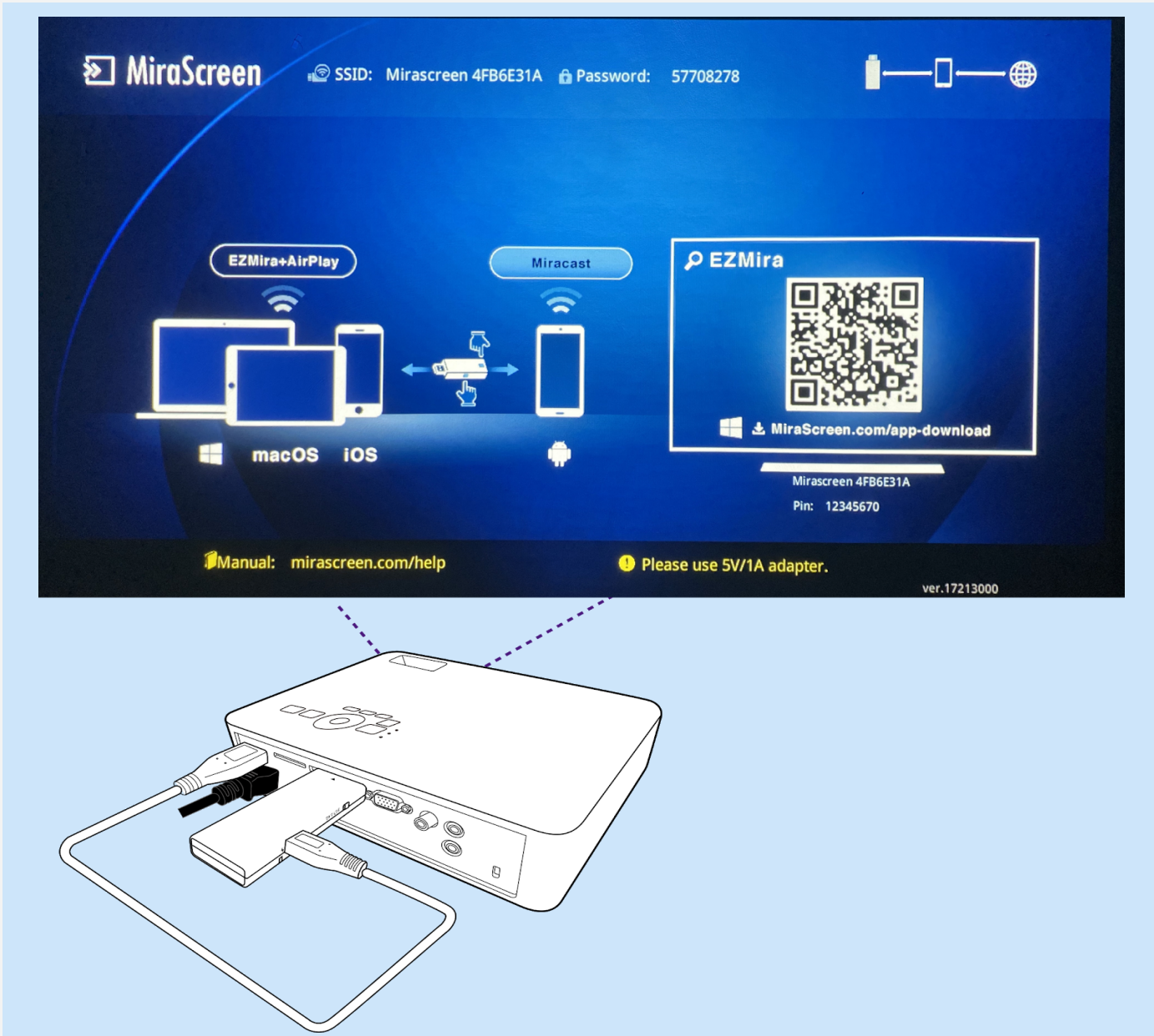


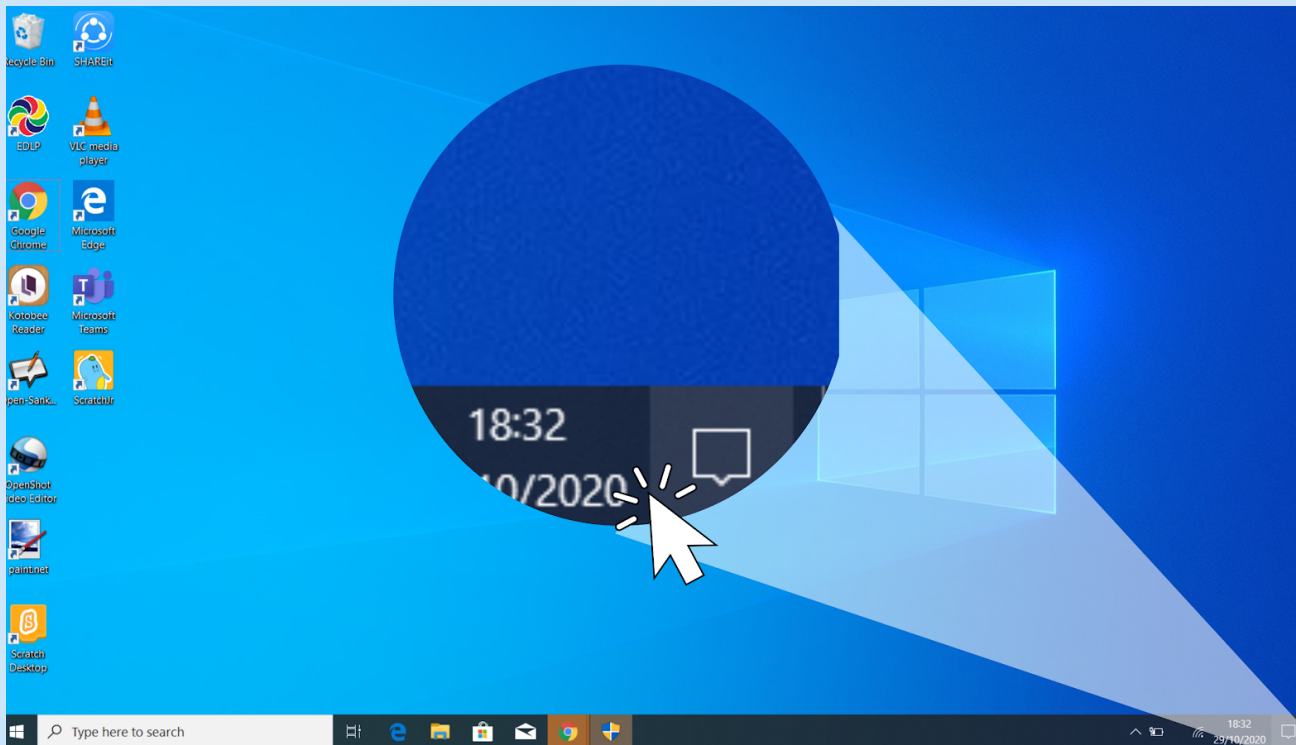
# Connecting the Projector to the Laptop

## 1. Mirroring the Laptop Screen using Wireless Dongle

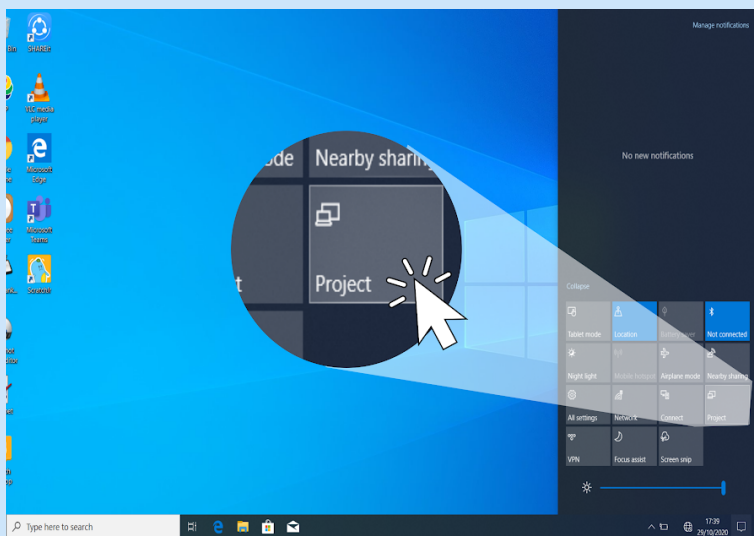


The image displays the MiraScreen interface on a projector screen and a diagram of the projector with a wireless dongle connected. The interface shows the MiraScreen logo, SSID (Mirascreen 4FB6E31A), and Password (57708278). It features two connection modes: EZMira+AirPlay (supporting Windows, macOS, and iOS) and Miracast (supporting Android). A QR code for EZMira is shown with the download link [MiraScreen.com/app-download](https://MiraScreen.com/app-download). The interface also displays the device name (Mirascreen 4FB6E31A) and PIN (12345670). A manual link is provided at [mirascreen.com/help](https://mirascreen.com/help). A warning states: "Please use 5V/1A adapter." The version number is ver.17213000.

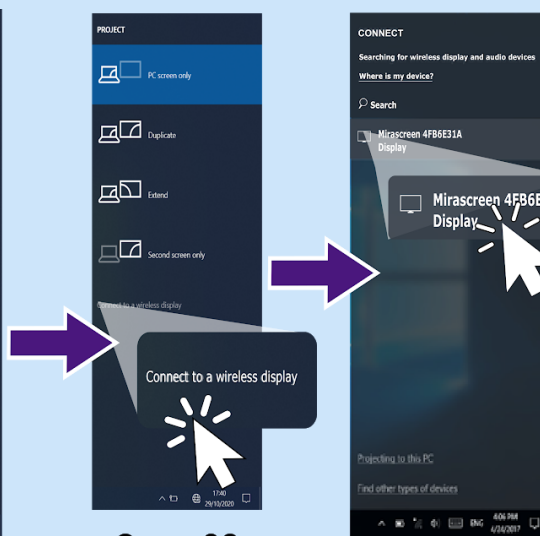
Ensure the Wireless Dongle is pre-connected to the Projector. Once the Projector power is turned ON, the Wireless Dongle will become functional.



Step 01



Step 02



Step 03

Step 04

Step 01: Go to Notification Bar in the Laptop

Step 02: Click on "Project"

Step 03: Click "Connect to the wireless display"

Step 04: Wireless Dongle devices within the access are displayed, Click on the Wireless Dongle that matches with the SSID displayed on the projection.

## 2. Mirroring the Laptop Screen using HDMI Cable

HDMI Cable is fixed to the wall adjacent to the Whiteboard. It is accessible to the teacher for connecting to the Laptop, as an alternative to wireless dongle fixed to the Projector.

To access the HDMI Cable, Please follow the below steps.



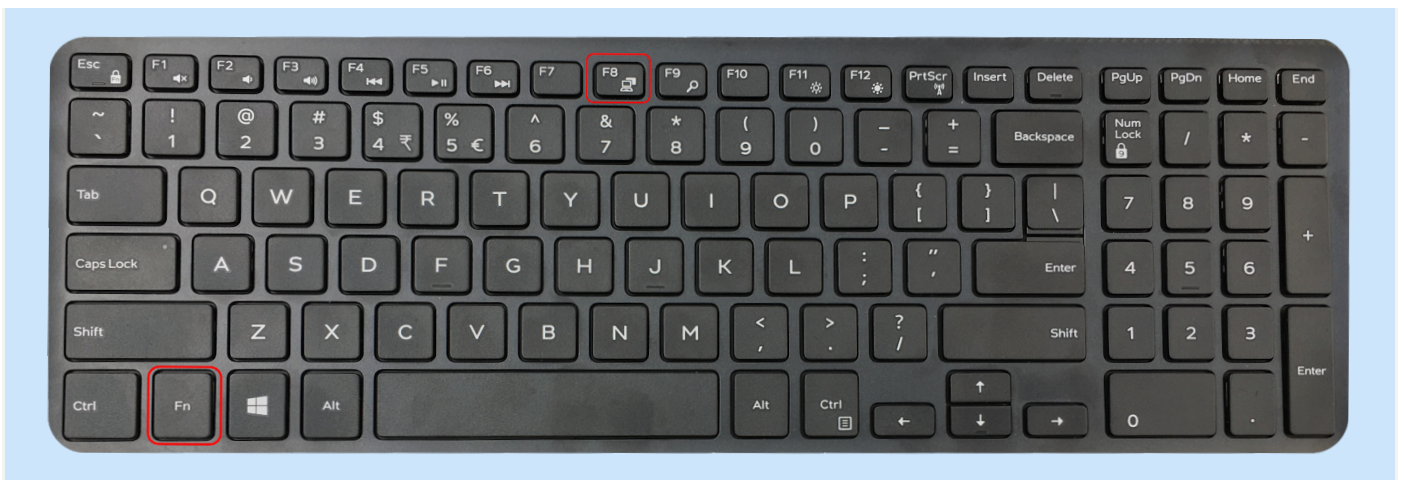
Step 01: Remove Wireless Dongle from the Projector



Step 02: Insert HDMI pin in to the Project HDMI Port



Step 03: Insert Other end HDMI pin in to the Laptop HDMI Port



The Projector auto identifies source, if not Click Function (Fn) key +F8 key on the Laptop keyboard to activate projection



**ALERT:** The information is provided for the reference purpose only. It is advised to not to change any settings, position, connectivity of the Projector. Any challenges contact the technical support team.