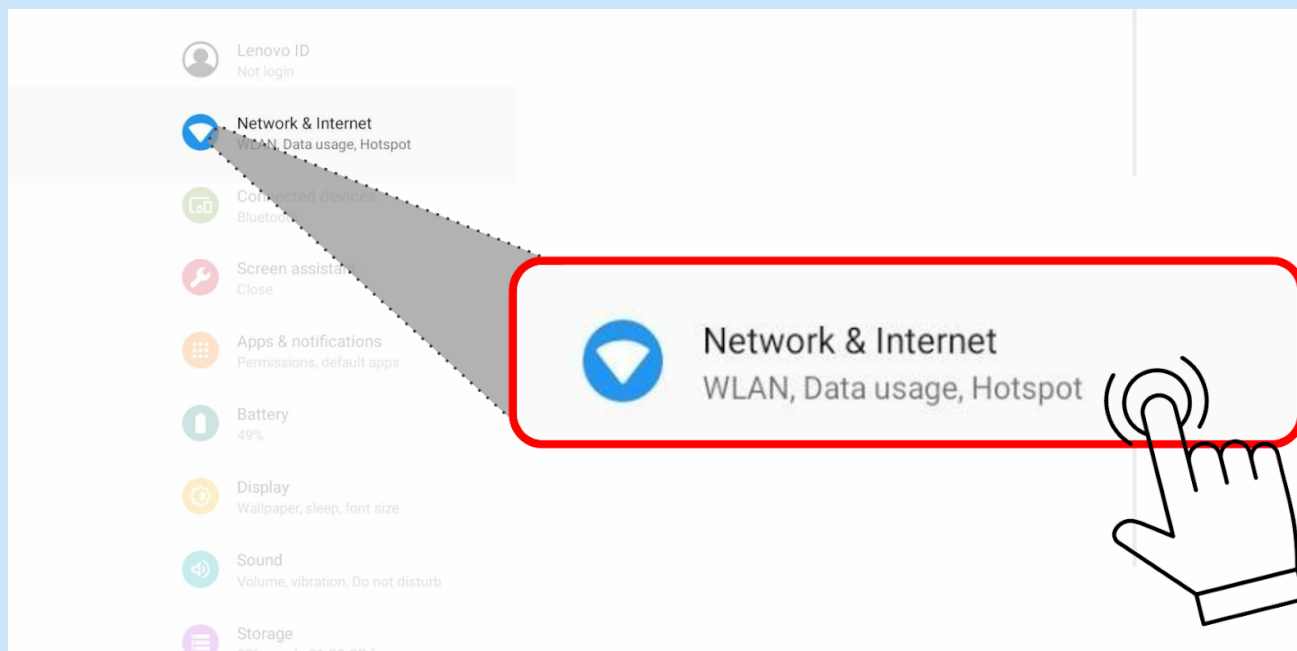


Network & Wireless Connection

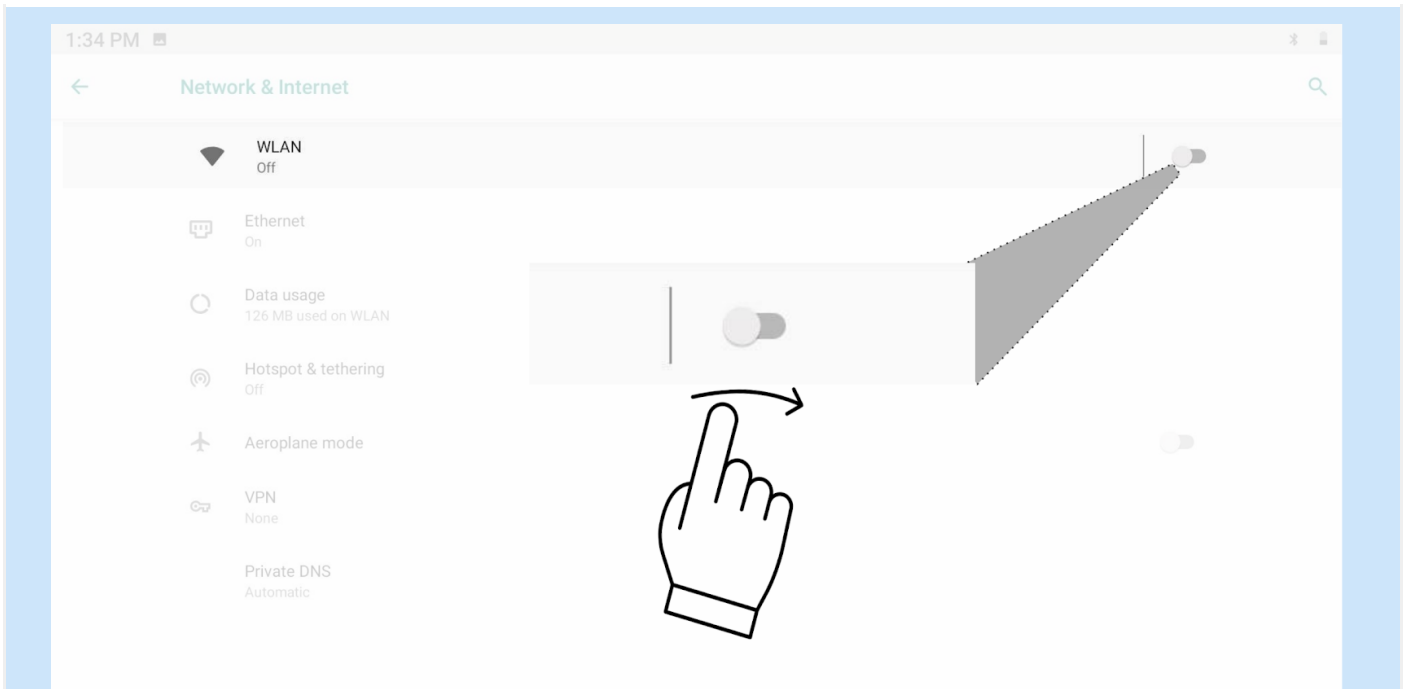
1. Connecting to Internet

Step 01: Click on Settings icon on Home Screen to access the Settings menu

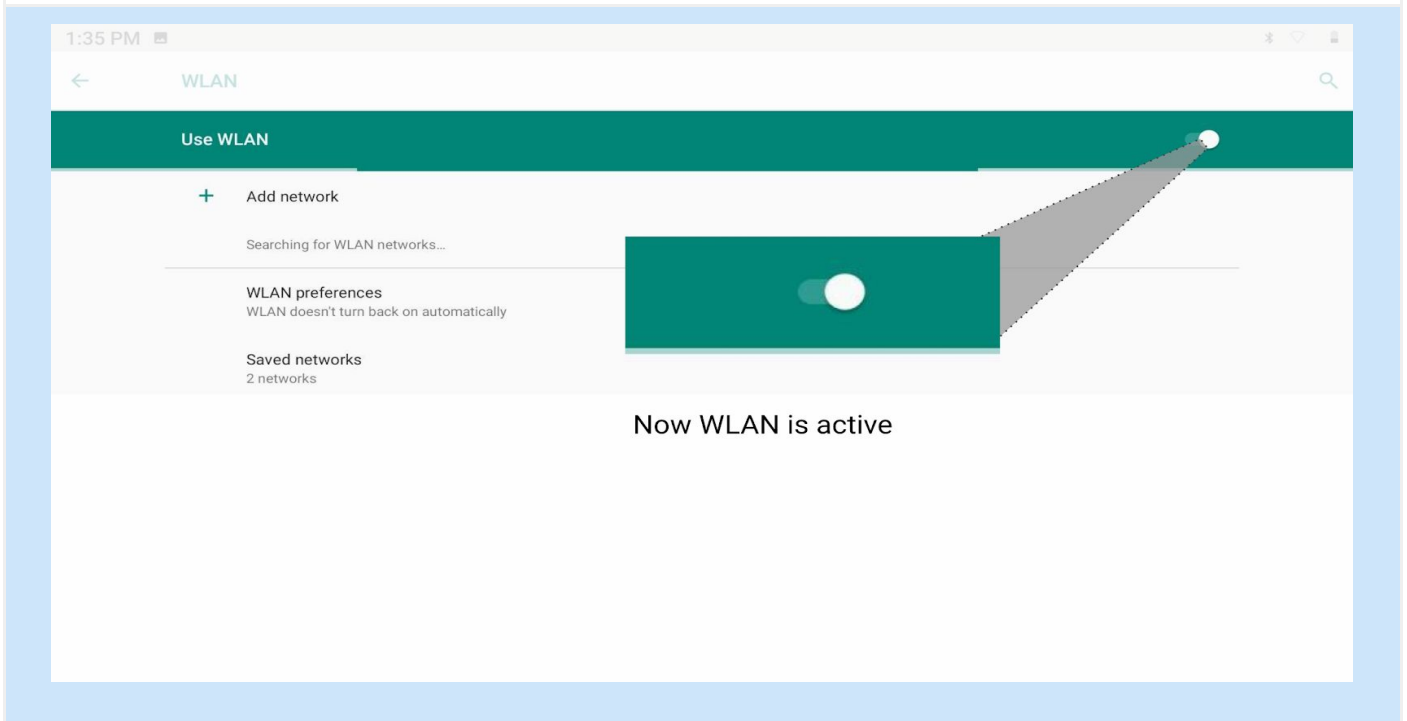
Refer Settings section

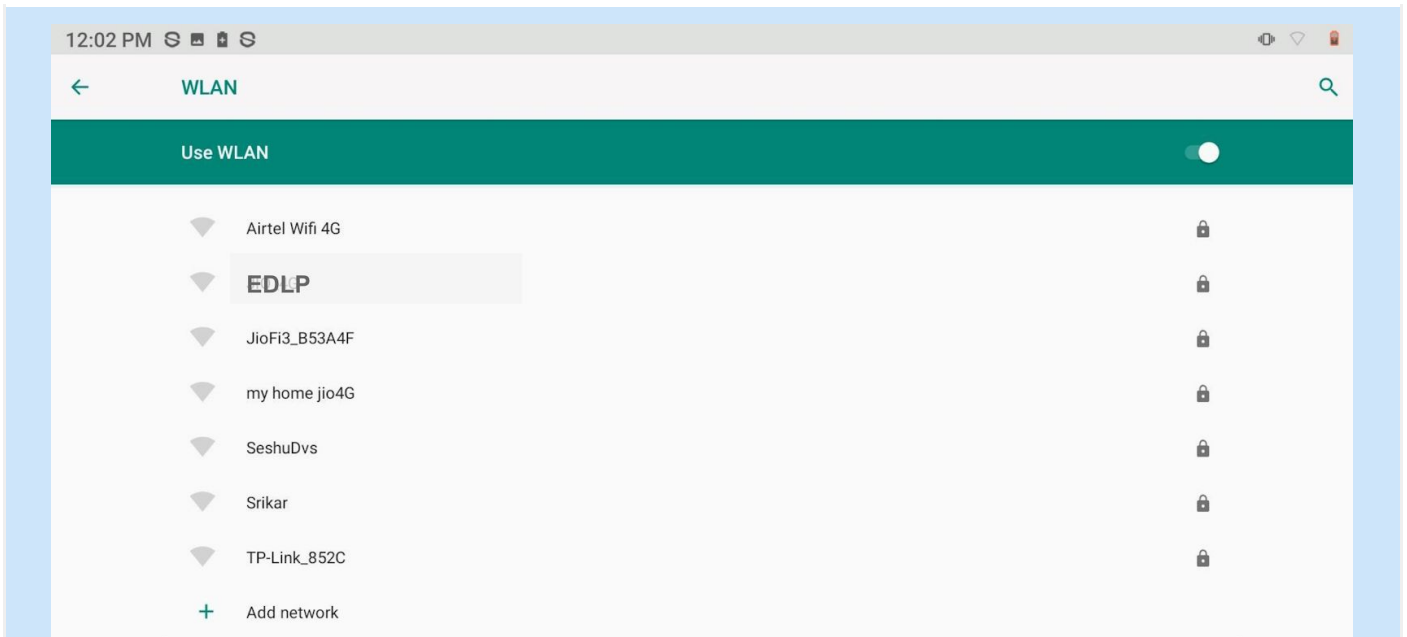


Step 02: Click Network & Internet icon

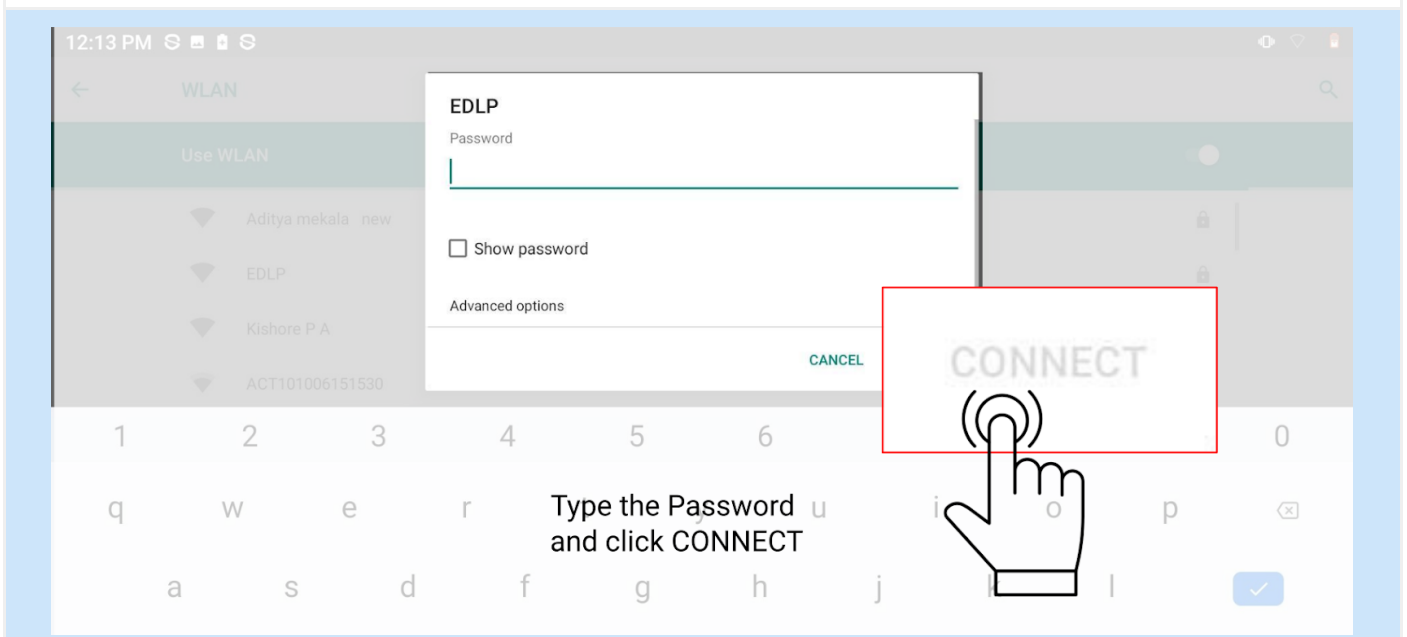


Step 03: If WLAN is in Off mode - swipe the button for activating On mode and click on WLAN.

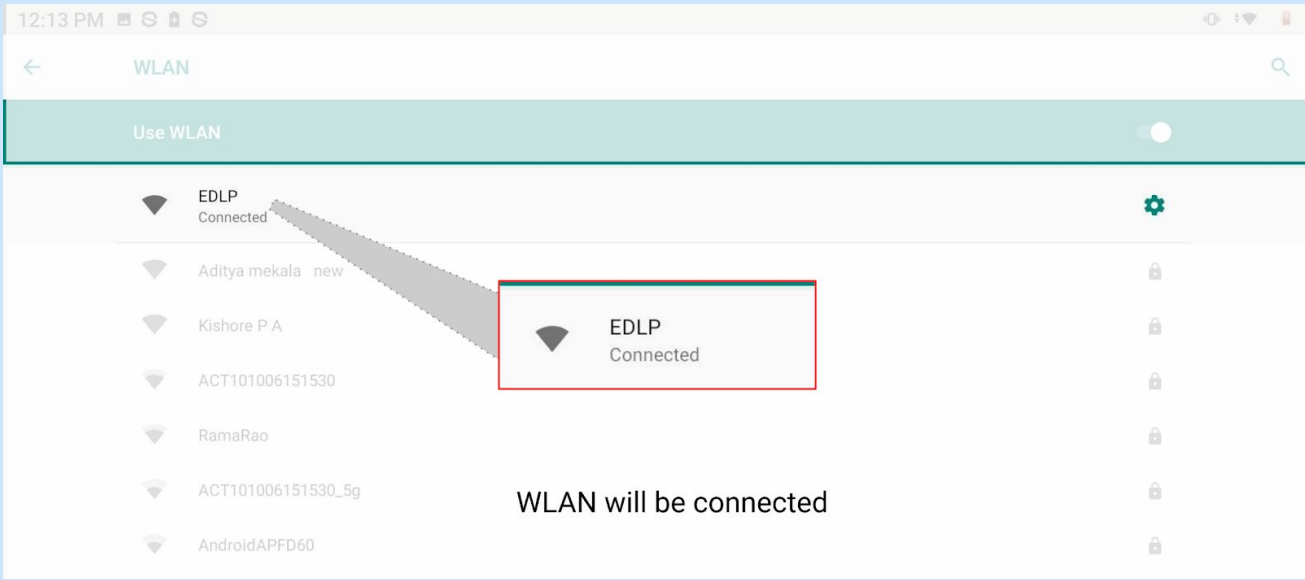




Step 04: Click on authorized WLAN from the list to connect to Wireless Internet



Step 05: Pop-up window asking for password opens, type the password and click CONNECT



12:13 PM

WLAN

Use WLAN

- EDLP Connected
- Aditya mekala new
- Kishore P A
- ACT101006151530
- RamaRao
- ACT101006151530_5g
- AndroidAPFD60

WLAN will be connected

After successful authentication the WLAN network will be Connected

2. Connecting the Tablet using Wireless Dongle



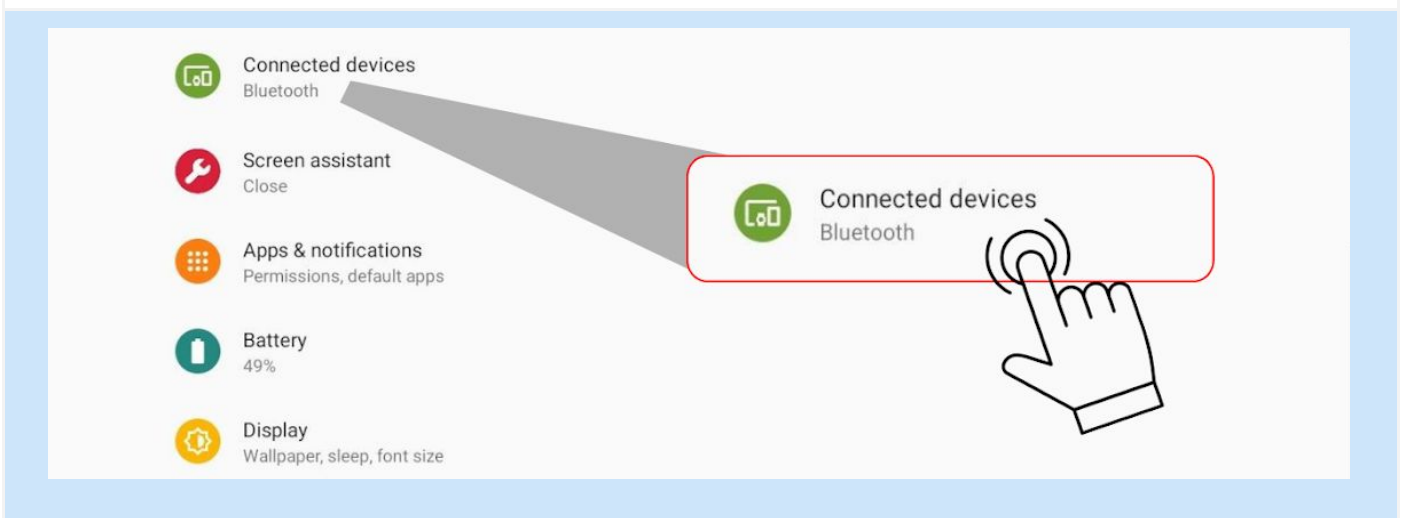
Before initiating the process, switch on the Projector power, In case everything is OK with the Projector and Wireless Dongle above screen will be displayed by the Projector

Connecting screen can be initiated using two (02) methods

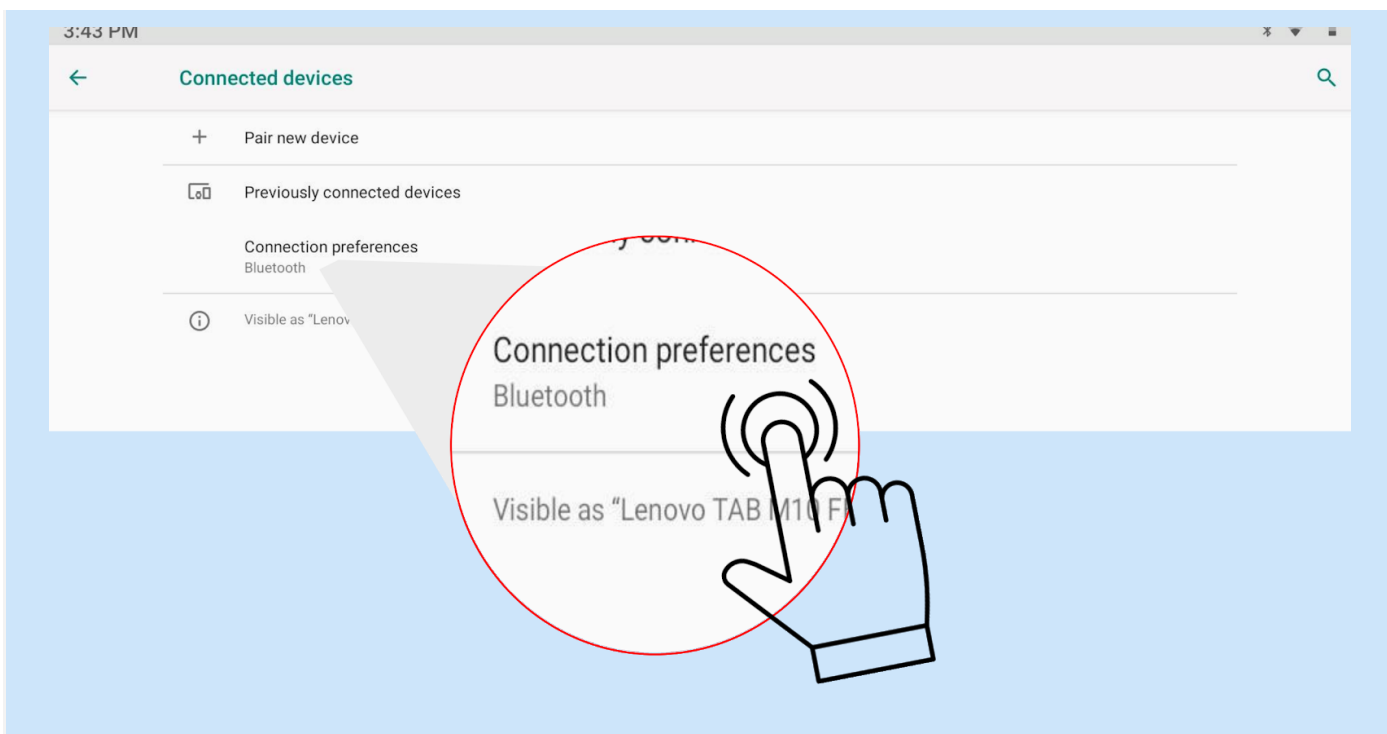
Method 01: Using Settings Menu

Step 01: Click on Settings icon on Home Screen to access the Settings menu

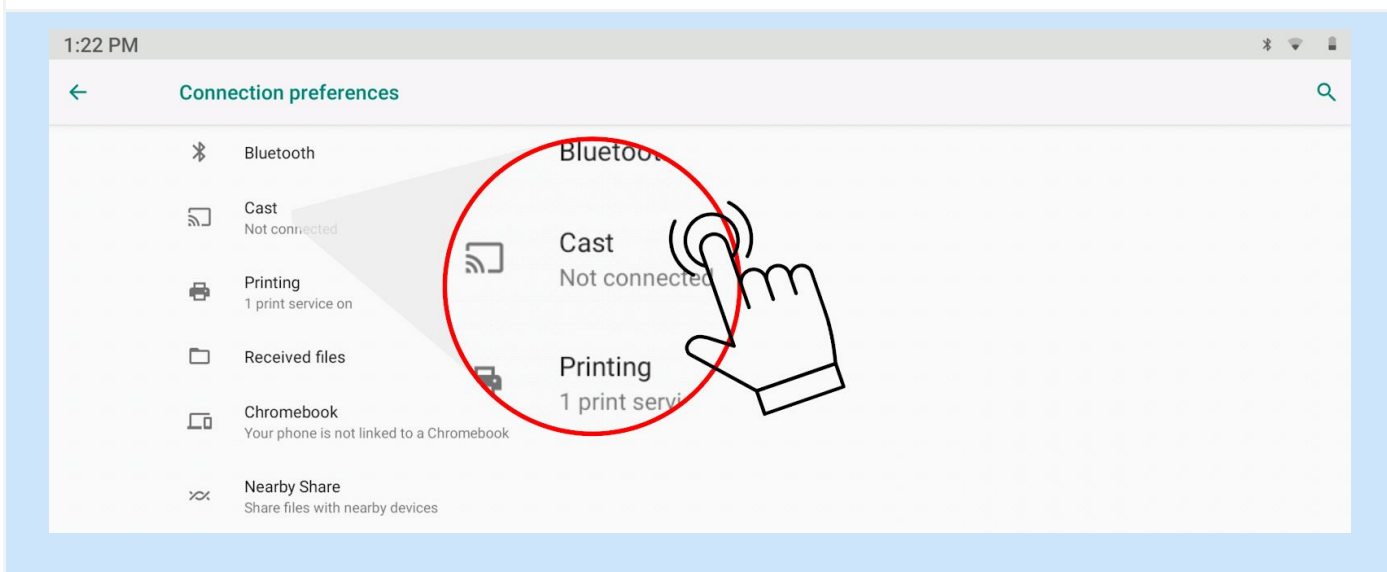
Refer Settings section



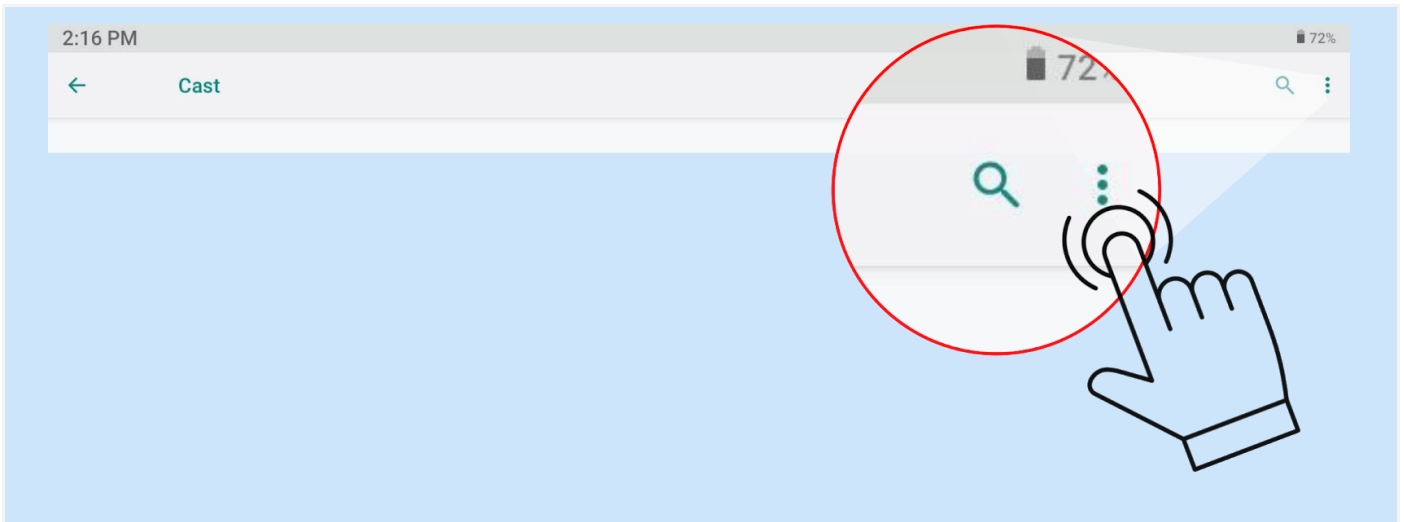
Step 02: Click on the Connected devices icon (By default Bluetooth option is shown for Connected devices)



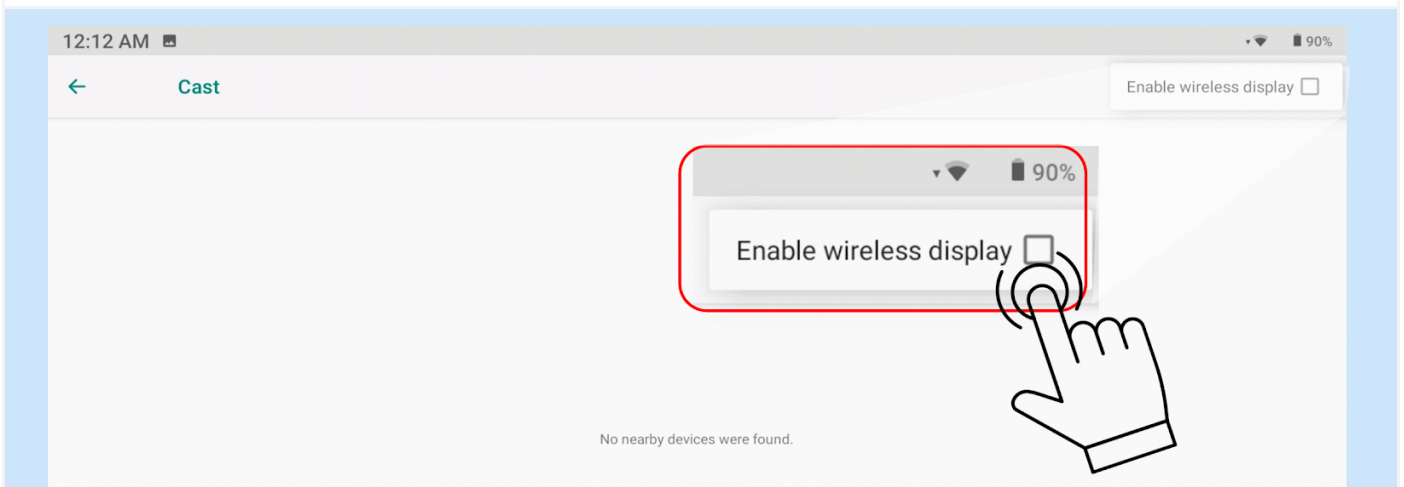
Step 03: Click on the Connection preferences for finding the wireless devices within access to connect to activate wireless connecting



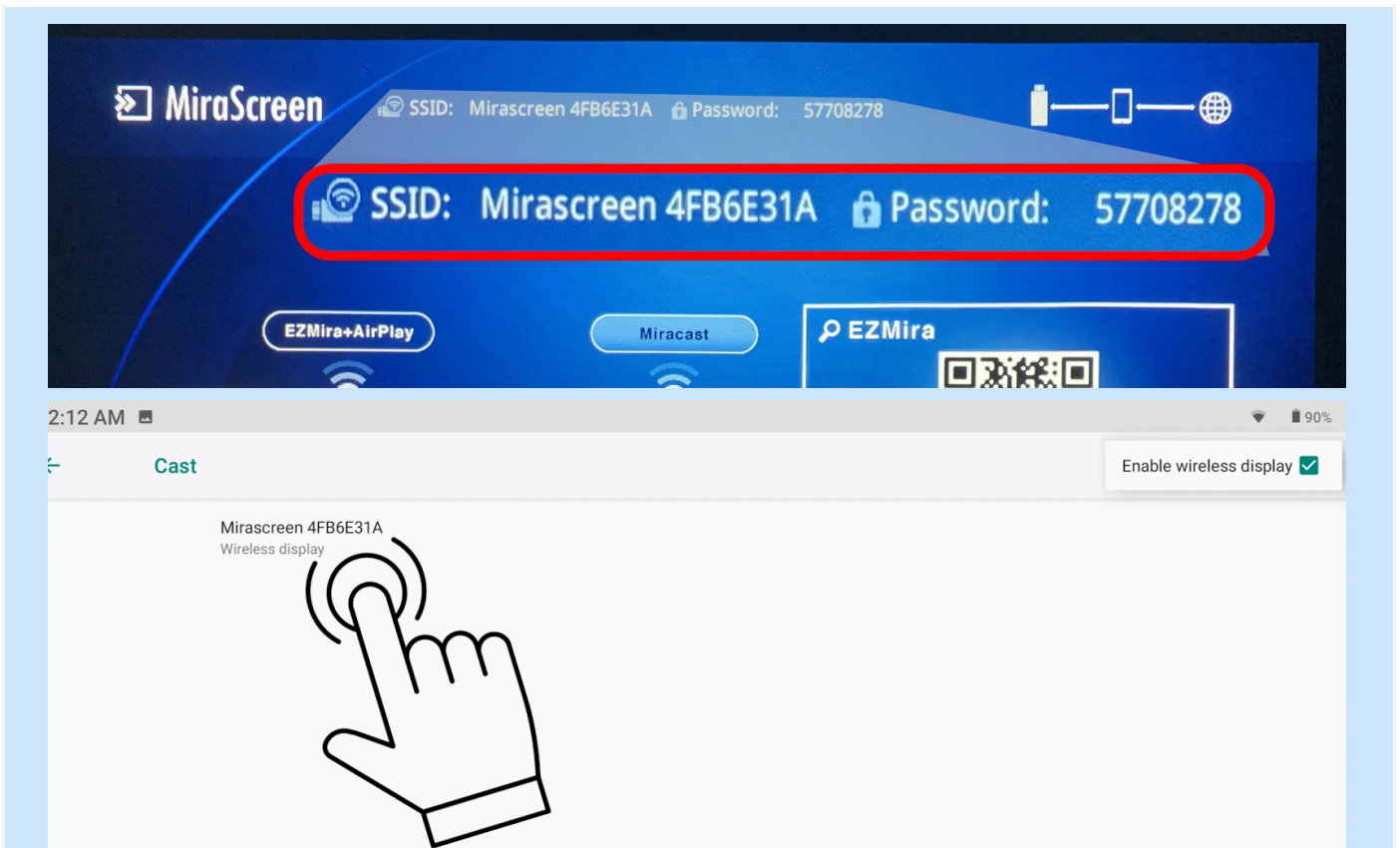
Step 04: Click on Cast to access the settings



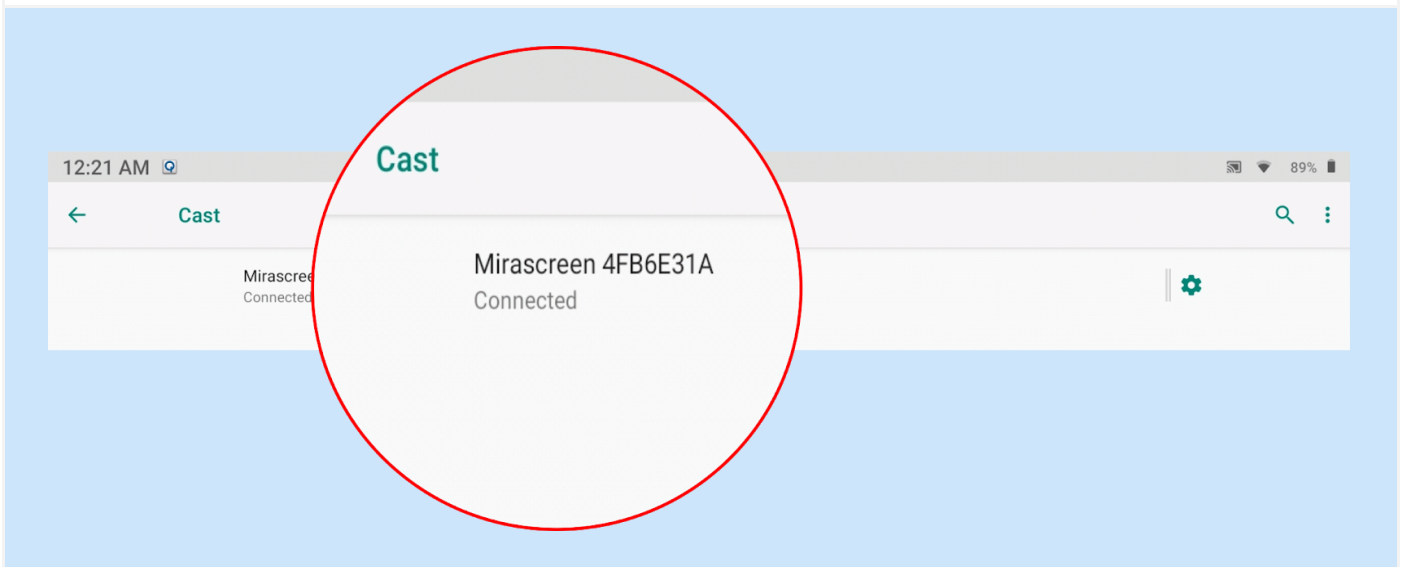
Step 05 - Click on three dots to access the settings



Step 06: Check Enable wireless display option

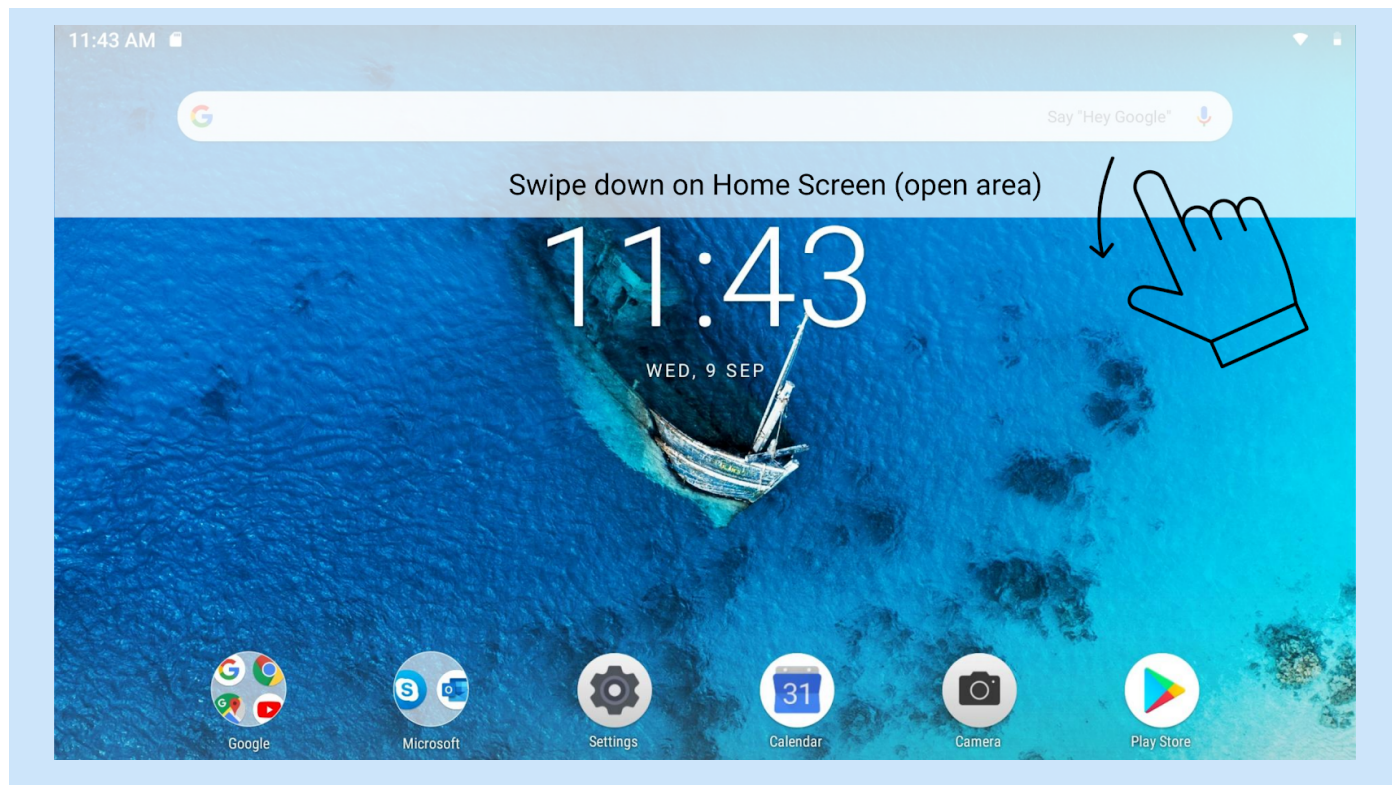


Step 07: Wireless Dongle devices within the access are displayed, Click on the Wireless Dongle that matches with the SSID displayed on the screen projected by the projector.

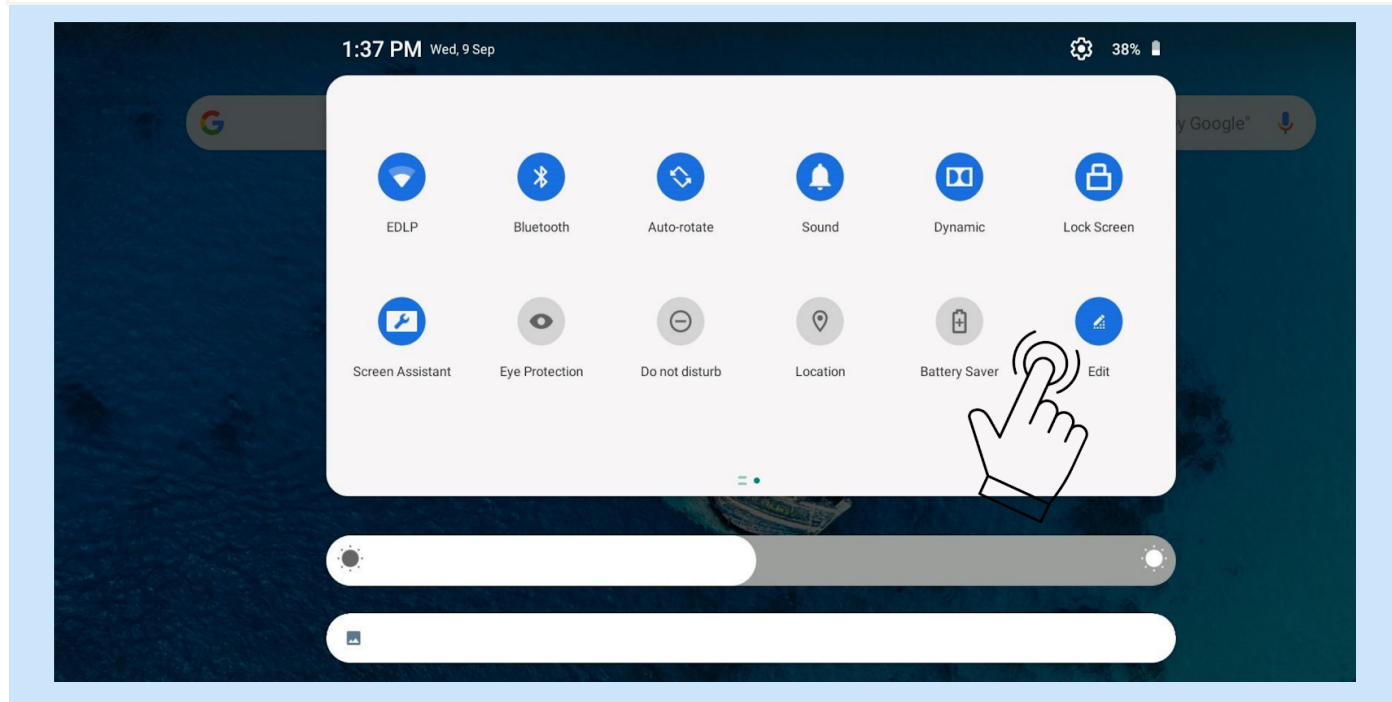


The Wireless Dongle is connected, screen casting is activated.

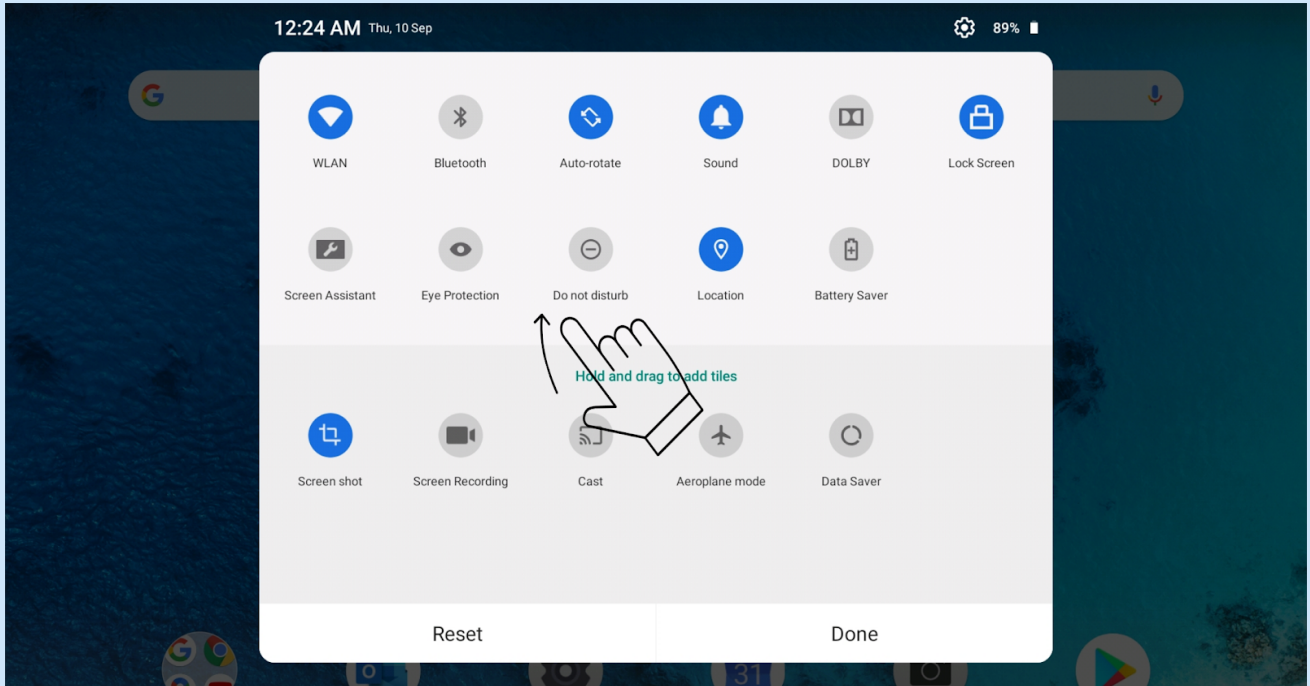
Method 02: Using Active Tiles on Notification Menu



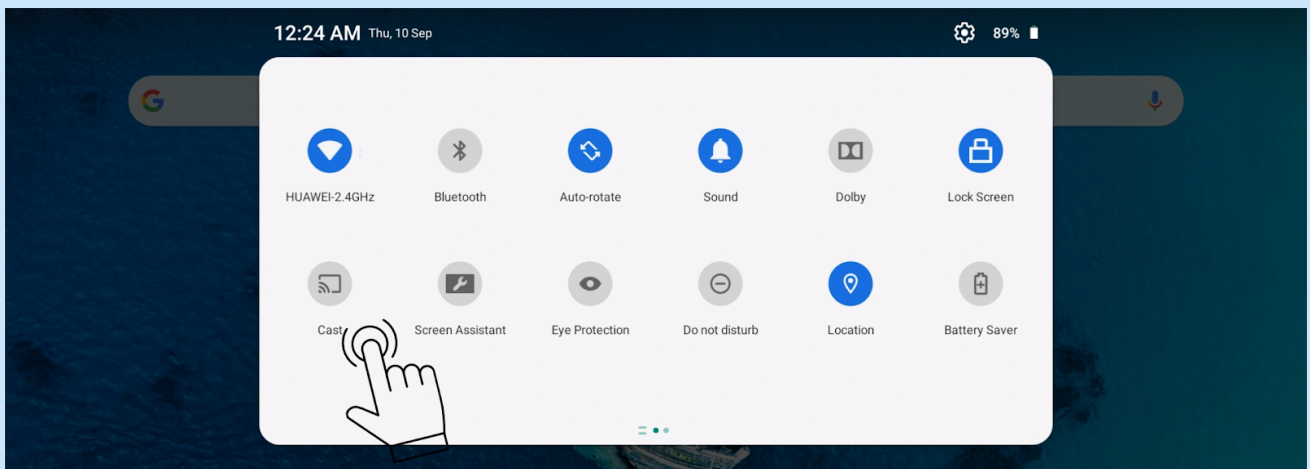
Step 01: Swipe down in the open area of Home Screen to access Notification Menu



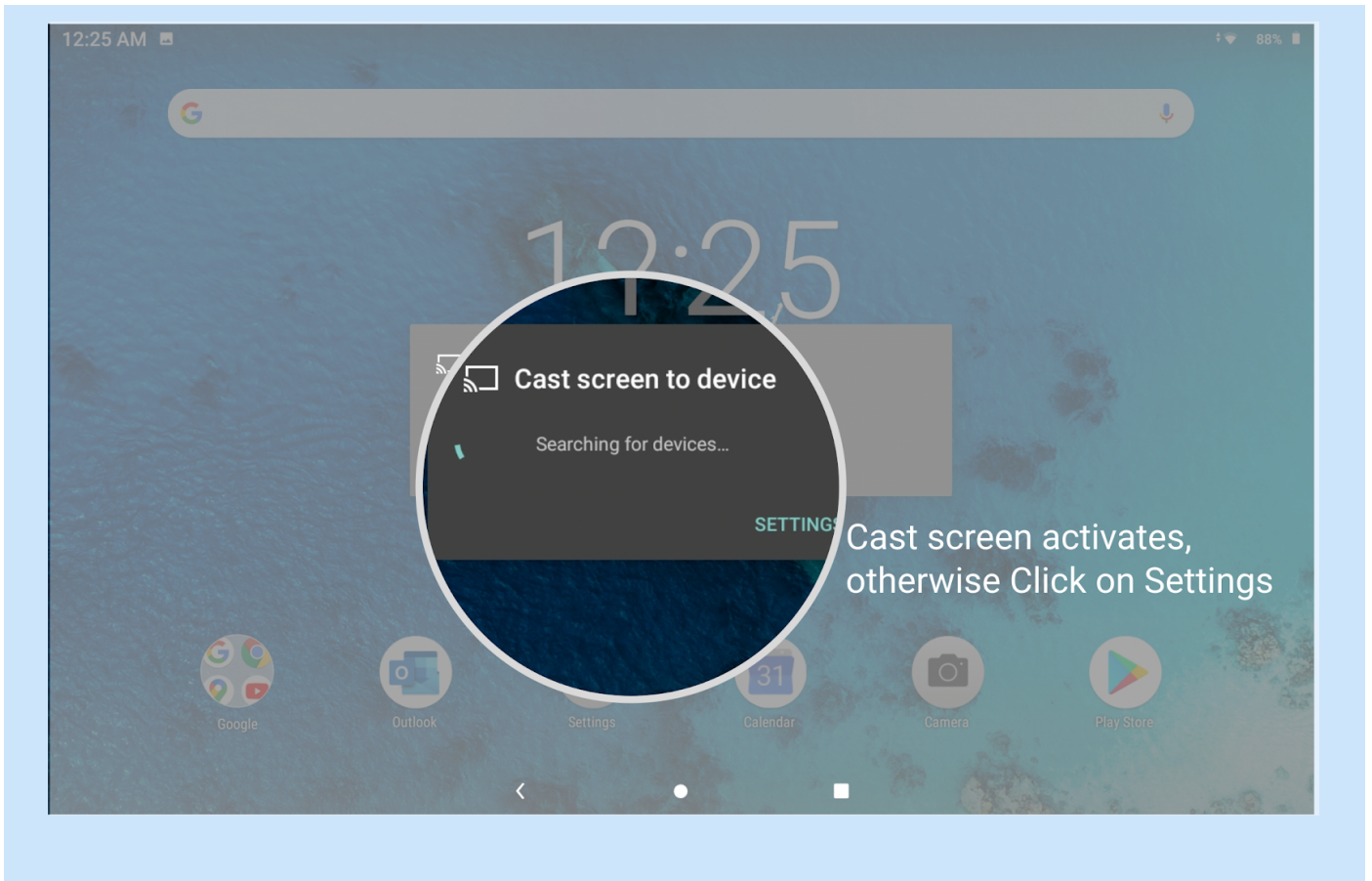
Step 02: Click Edit to view all the Tiles available in Notification menu.



Step 03: Drag Cast icon to active window and Click done

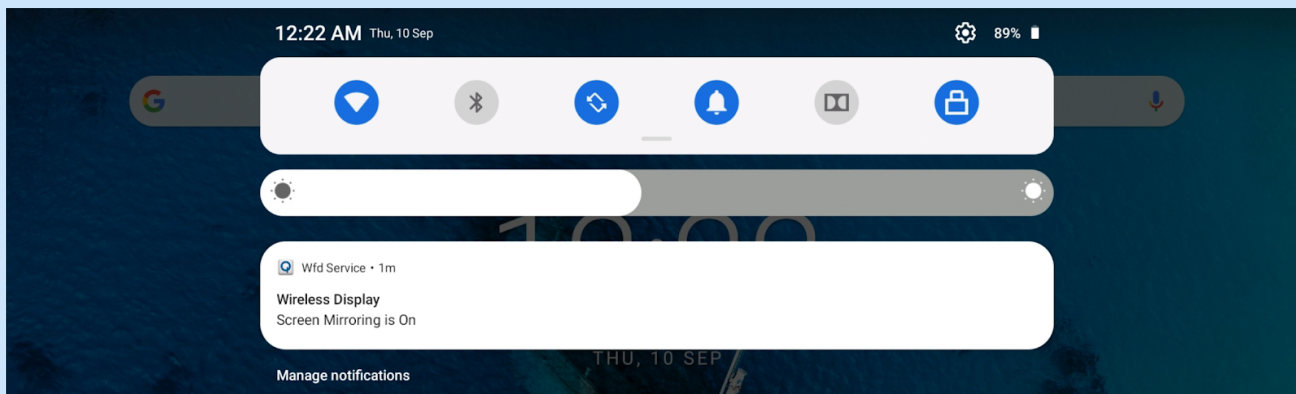


Step 04: Cast icon is added in the active window, Click on Cast



Step 05: Cast screen to device activates, click Settings and follow steps from Method 01 Step 02 to connect to Wireless Dongle

3. Disconnecting the Wireless Dongle



Wireless Display status is displayed in Notification bar



To Disconnect from Casting, select the name of the Wireless Dongle and click on DISCONNECT; The Wireless display status is visible on the Notification Menu for reference.