

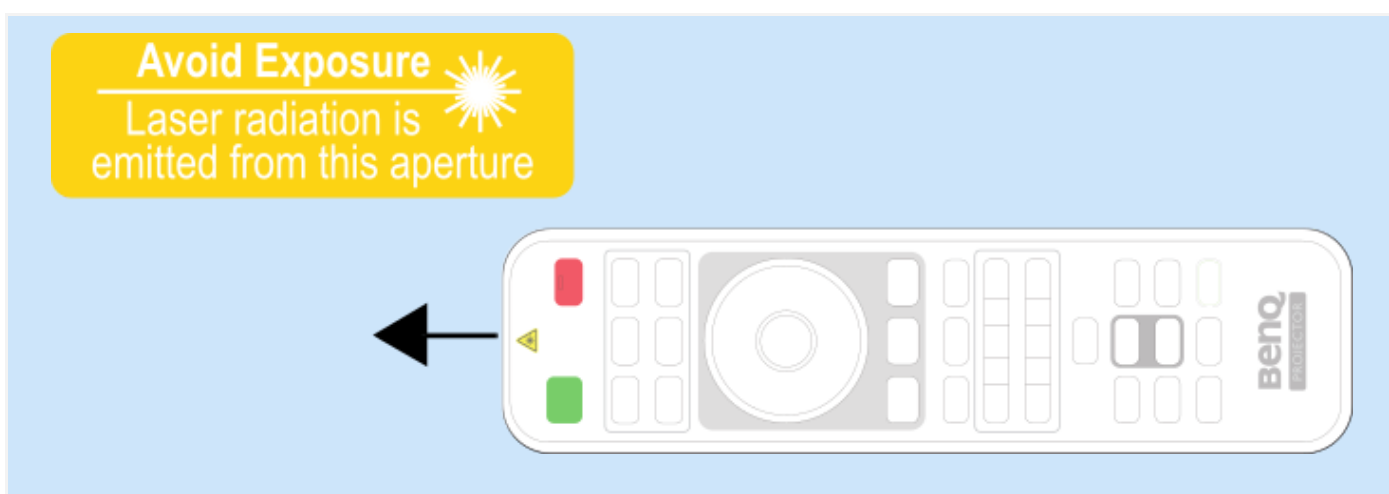
Remote Control

1. Operating the Laser Pointer

The Laser Pointer is a presentation aid for Educators/ Teachers. It emits red colored light when you press it. The laser beam is visible. It is necessary to press and hold LASER for continuous output.

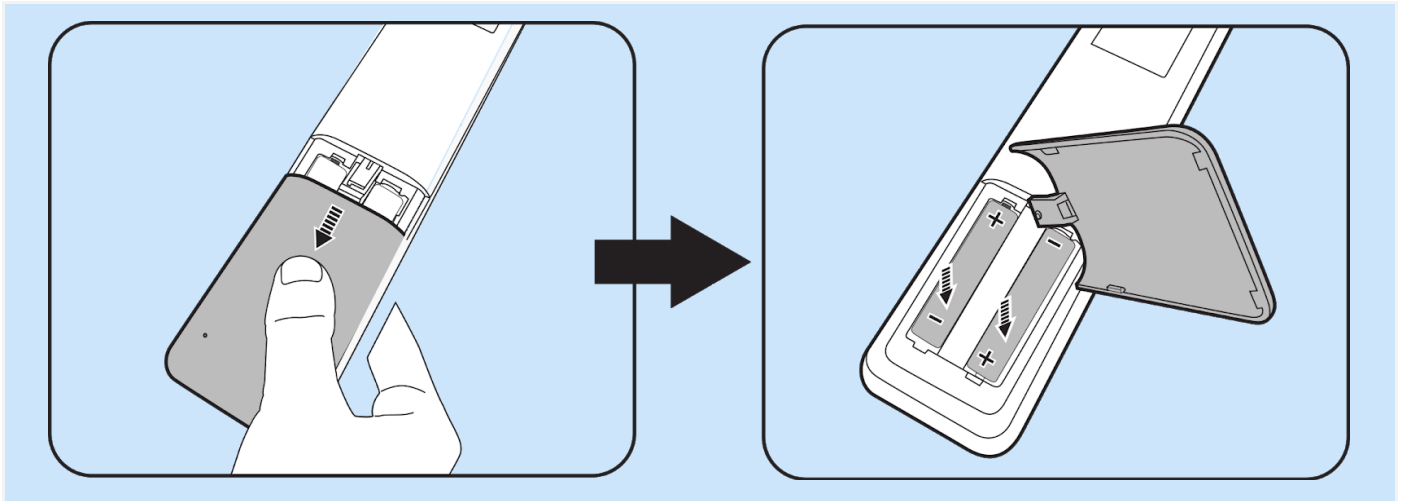
The laser pointer is not a toy. Educators/ Teachers should be mindful of the dangers of laser energy and keep this remote control out of the reach of students.

Do not look into the laser light window or shine the laser light beam on yourself or others. See the warning messages on the back of the remote control prior to using it.



ALERT: The information is provided for the reference purpose only. Follow the safety instructions while handling the device.

2. Replacing the Remote Control batteries



1. Press and slide off the battery cover, as illustrated.
2. Remove the old batteries (if applicable) and install two AAA batteries. Make sure that the positive and negative ends are positioned correctly, as illustrated.
3. Slide the battery cover in until it clicks into place.
 - Avoid leaving the remote control and batteries in an excessive heat or humid environment.
 - Replace only with the same or equivalent type recommended by the battery manufacturer.
 - Dispose of the used batteries according to the manufacturer's instructions and local environment regulations for your region.
 - Never throw the batteries into a fire. There may be danger of an explosion.
 - If the batteries are dead or if you will not be using the remote control for an extended period of time, remove the batteries to avoid damage to the remote control from possible battery leakage.



ALERT: The information is provided for the reference purpose only. Please follow the safety instructions while disposing the used batteries.

3. Remote Holder



Remote Holder is fixed in the classroom beside the Whiteboard / Blackboard at 5Ft height from the ground. Remote of the Projector can be placed in this holder.



ALERT: The information is provided for the reference purpose only.