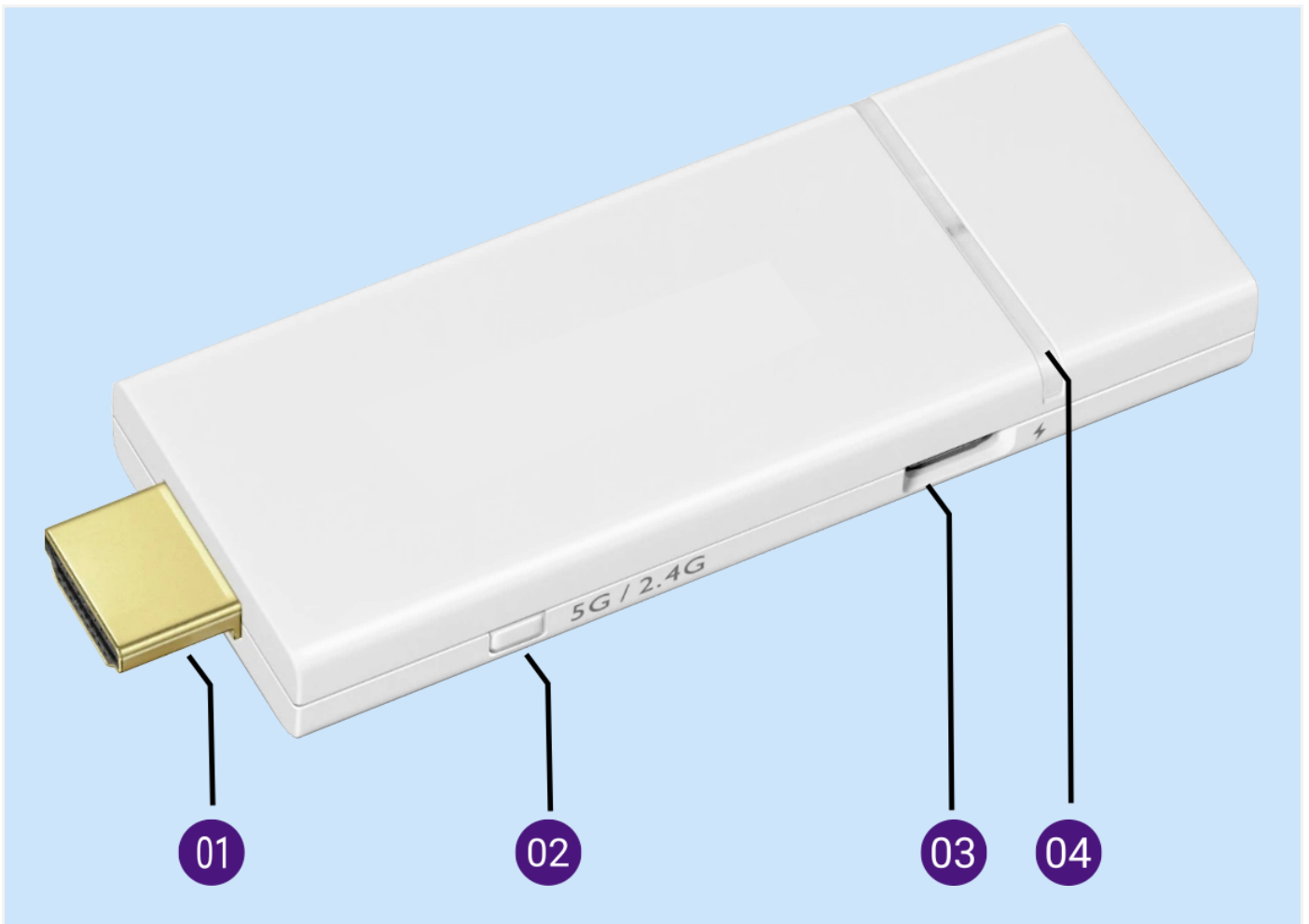


## Wireless Dongle



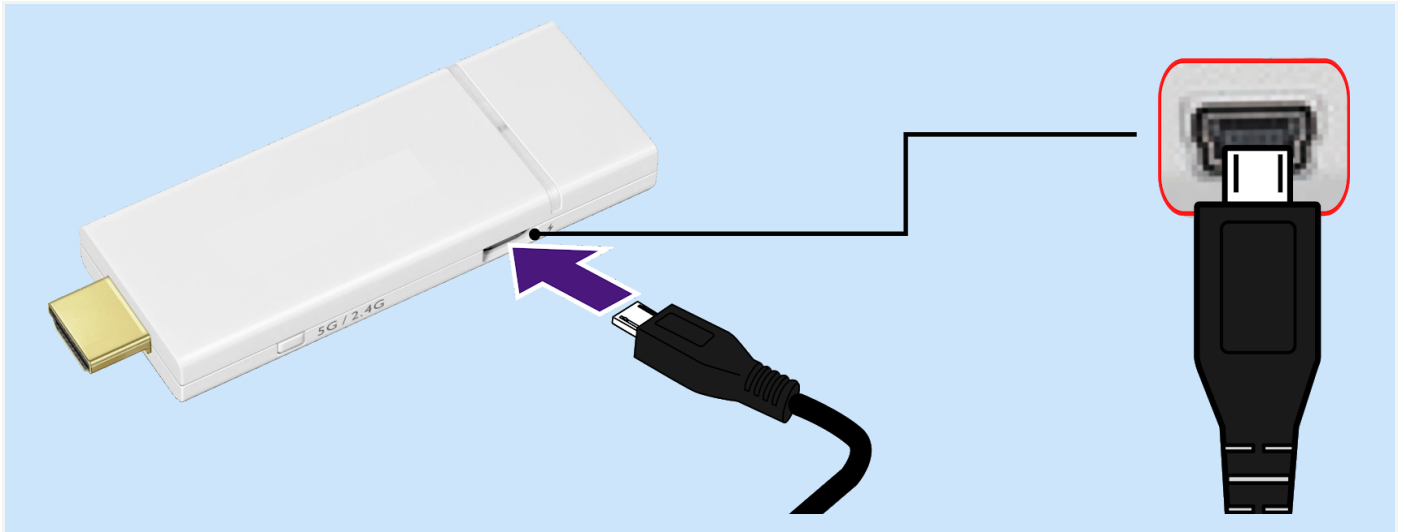
01. HDMI Connector: Connects to the Projector.

02. 5G / 2.4 Wi-Fi Switcher: Switches the Wi-Fi signal between 5G and 2.4G when pushed. The default setting for the signal is 5G.

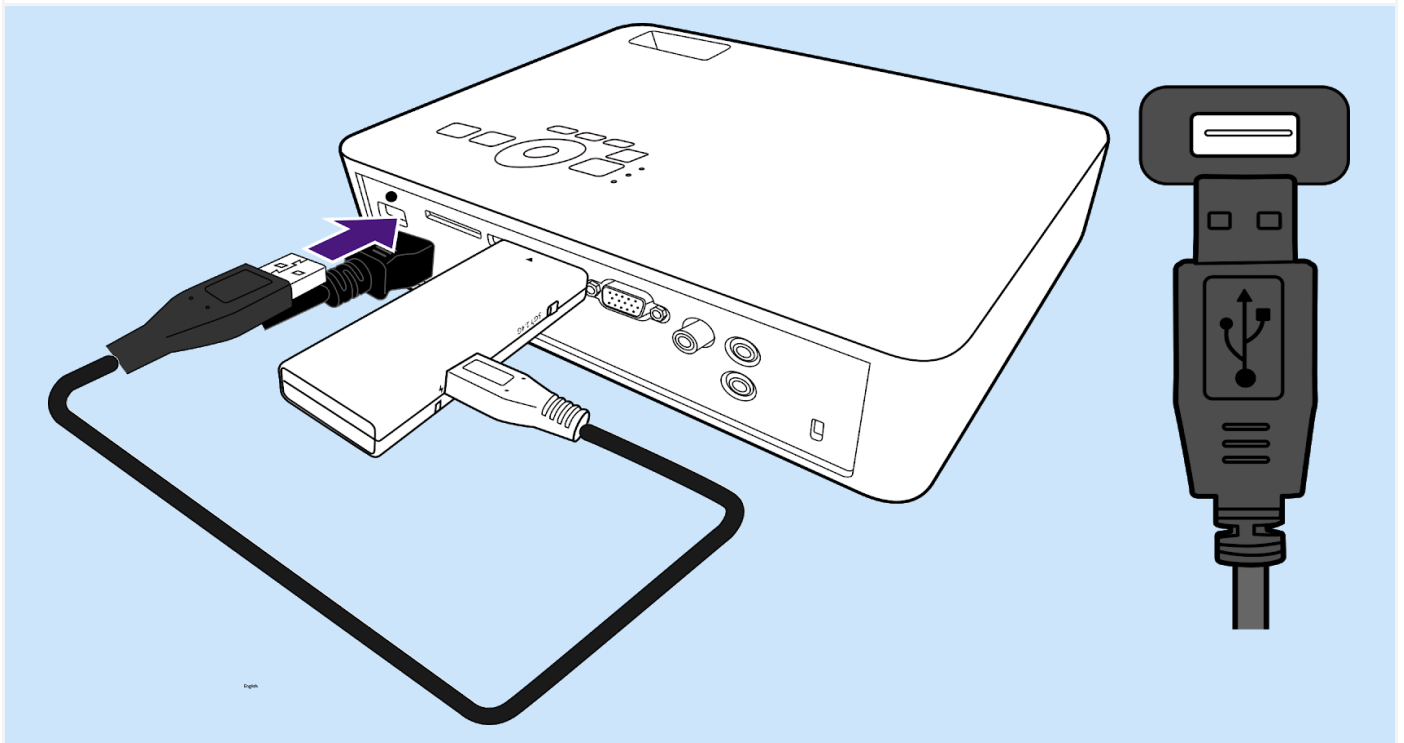
03. USB Port: Connects to the display's USB port (or a standard adaptor head) via the Micro-USB cable to supply the Wireless Dongle with power.

04. LED Indicator: Lights up blue when power is supplied.

## 1. Plugin the Wireless Dongle



Step 01: Plugin the Micro USB cable in Wireless Dongle



Step 02: Plugin the USB Connector in the USB Type A Port of the Projector



**ALERT:** The plugs to the Wireless Dongle should be intact. Any loose connection may affect the output projection.