

EARLY DIGITAL LEARNING PROGRAMME
WPF – Application Update Guidance for Teacher
Laptop
(Version – 1.12.24)

Early Digital Learning Programme
WPF Update Guidance Version – 1.12.24 for Teacher Laptop

INDEX

PART - A	3
1.Update Guidance for Version 1.12.24 for Teacher Laptop:	3
(i). Pre-requirements	3
(ii). WPF application (Mandatory update)	3
1a. Online Method - Mandatory Update of the WPF application to v1.12.24:	4
1b. Offline Method - Mandatory Update of the WPF application to v1.12.24:	14
PART - B	31
2.Preliminary Verification (for Ready Reference)	31
2a. Setting up of Date & Time (One Time Process)	31
2b. Updating of the Laptop to the latest Windows Version:	33
PART – C	36
3. Changing the WPF application from Training Login to Teacher Login (For Ready Reference):	36

Early Digital Learning Programme
WPF Update Guidance Version – 1.12.24 for Teacher Laptop

PART - A

1.Update Guidance for Version 1.12.24 for Teacher Laptop:

WPF Application update for Educator's Devices (Laptop) for usage of Training User Credentials in Offline mode.

(i). Pre-requirements

1. Laptop supplied & commissioned in Phase-III only, which comes with pre-installed WPF application.
2. Stable Internet Connection for certain functions.

(ii). WPF application (Mandatory update)

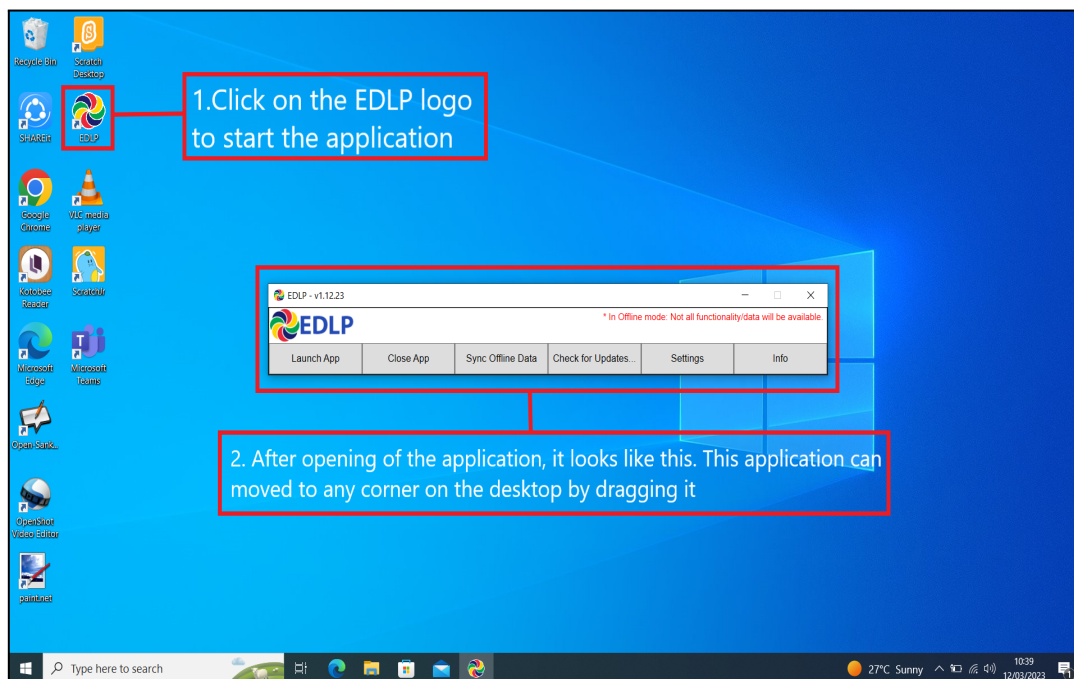
- a. For usage of CMS applications in Offline mode.
- b. All the Laptops that were commissioned must be updated to version **v1.12.24**.
- c. All the Laptops with WPF Application versions v1.12.12, v1.12.13, v1.12.14, v1.12.15, v1.12.16 must be mandatorily updated to version **v1.12.24** for usage by Educator's with the User-ID credentials circulated by the Ministry of Education, Tertiary Education, Science & Technology (MoETEST).
- d. Process defined in this document is meant for usage of WPF applications with the User id credentials provided by the Ministry.
- e. WPF applications should be synced & updated to enable certain features & functionalities to work in Offline mode.
- f. Two methods (Online Method & Offline Method) procedure is in this document for updating the WPF Application to **v1.12.24**.

Early Digital Learning Programme

WPF Update Guidance Version – 1.12.24 for Teacher Laptop

1a. Online Method - Mandatory Update of the WPF application to v1.12.24:

Step 1: Click on the EDLP logo to start the application. After opening the application, it looks like this as shown in the Pic-1.



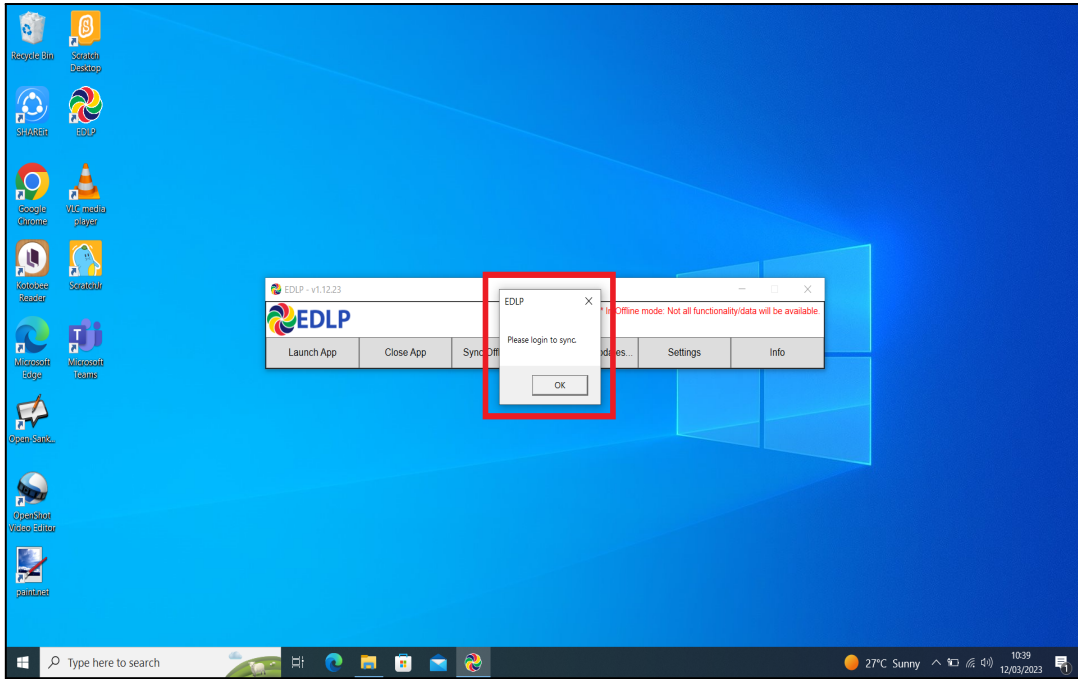
Pic-1

Before starting the updating of WPF Application, we need to do the “Sync Offline Data” process. So, if there is any data available in local storage it will be uploaded to the server synced with the **Teacher User id and password** and when the Application is updated and no data will be missed. Please follow below process:

If “Sync Offline Data” is clicked without logging in, The Syncing process won't start. Please note that we need to be logged in before starting the Syncing Process.

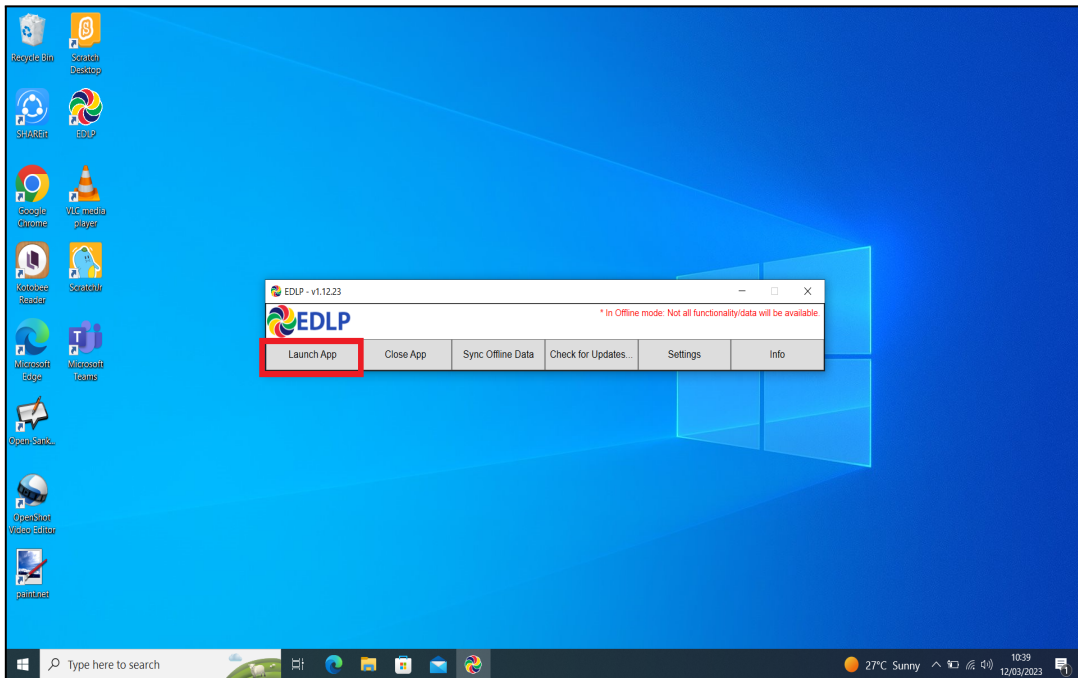
Early Digital Learning Programme

WPF Update Guidance Version – 1.12.24 for Teacher Laptop



Pic-2

Step 2a: Click on "Launch App".

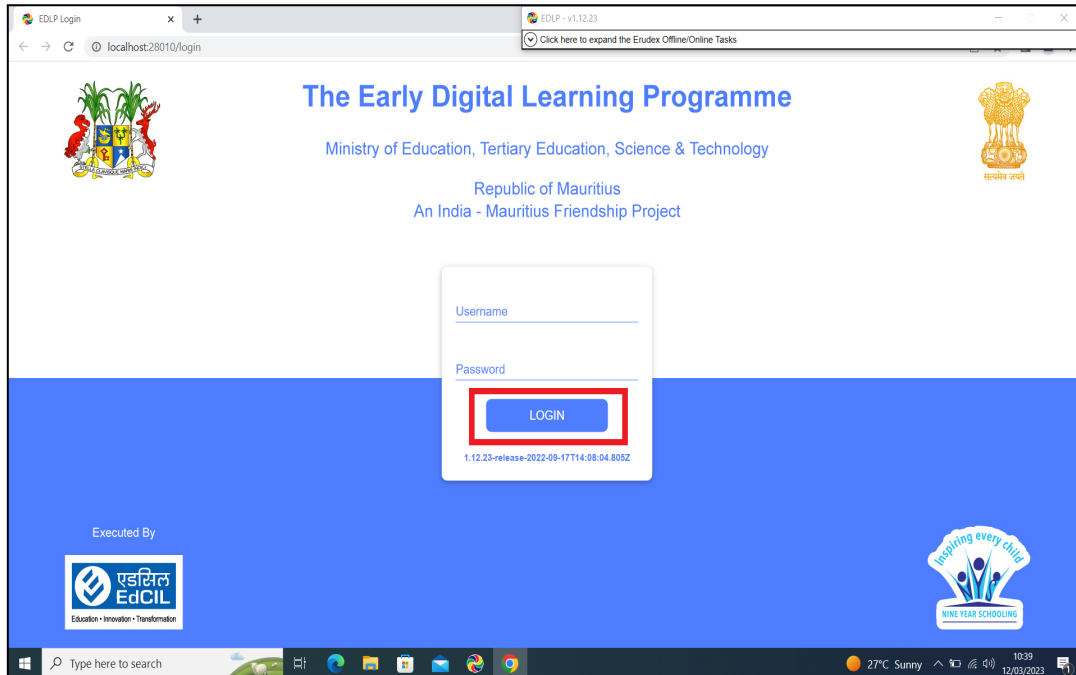


Pic-3

Early Digital Learning Programme

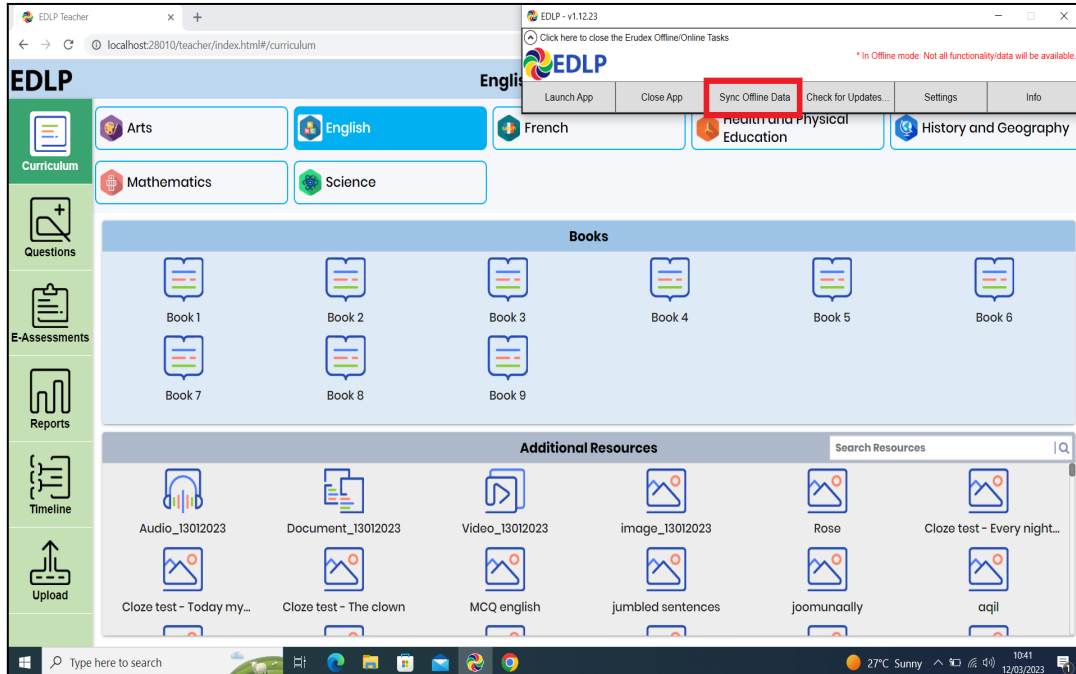
WPF Update Guidance Version – 1.12.24 for Teacher Laptop

Step 2b: Log-in with the Ministry provided **Teacher User id and password**.



Pic-4

Step 2c: Click on “Sync Offline Data”.

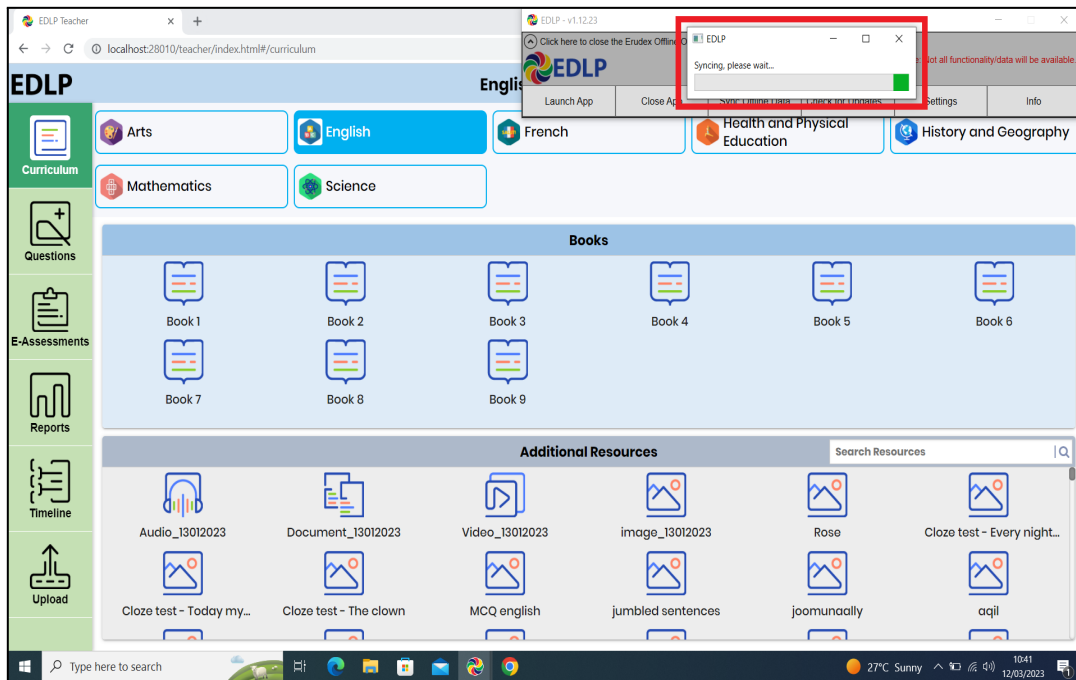


Pic-5

Early Digital Learning Programme

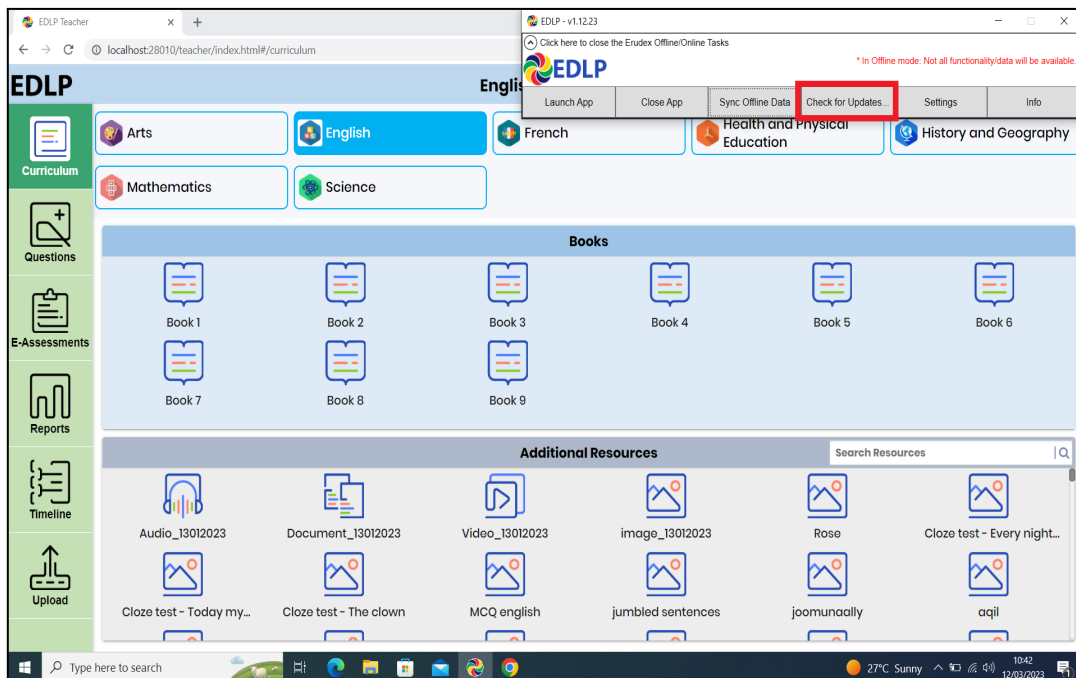
WPF Update Guidance Version – 1.12.24 for Teacher Laptop

Step 2d: Please wait till the Syncing process is completed.



Pic-6

Step 3: Once the Syncing process is finished, now to update the WPF Application to the new version of EDLP - **v1.12.24** click on "Check for Updates" and follow the steps as shown below.

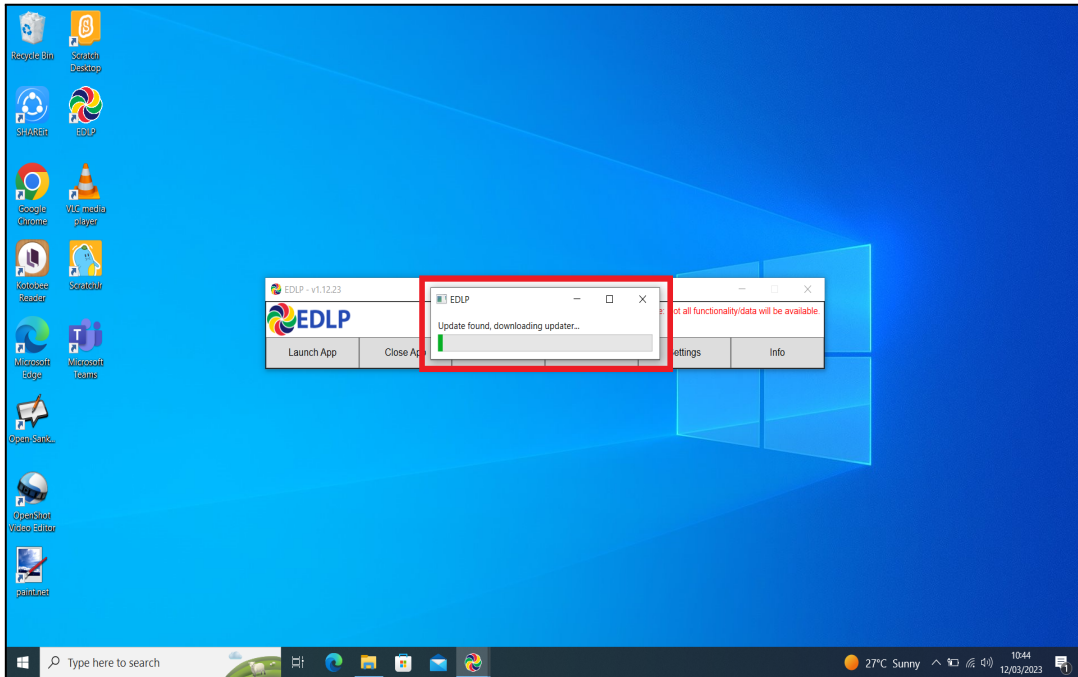


Pic-7

Early Digital Learning Programme

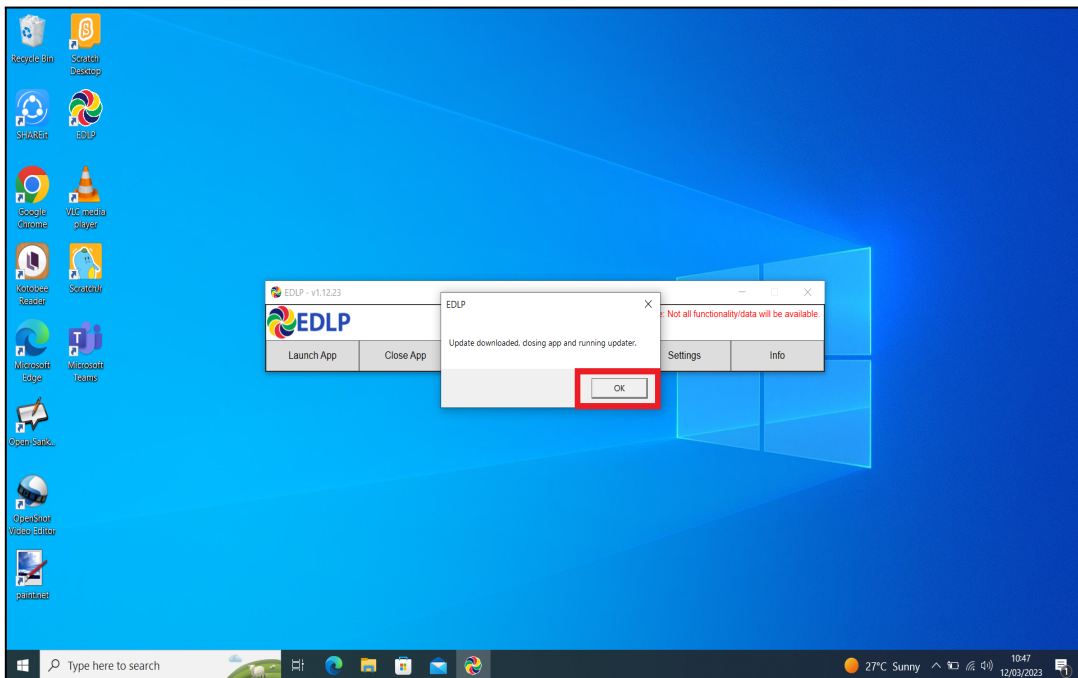
WPF Update Guidance Version – 1.12.24 for Teacher Laptop

It pops up the window showing that "Update found, downloading updater...". Don't close till the download completes.



Pic-8

Step 4: Now click on "OK" and it starts installing the updated version of the WPF.

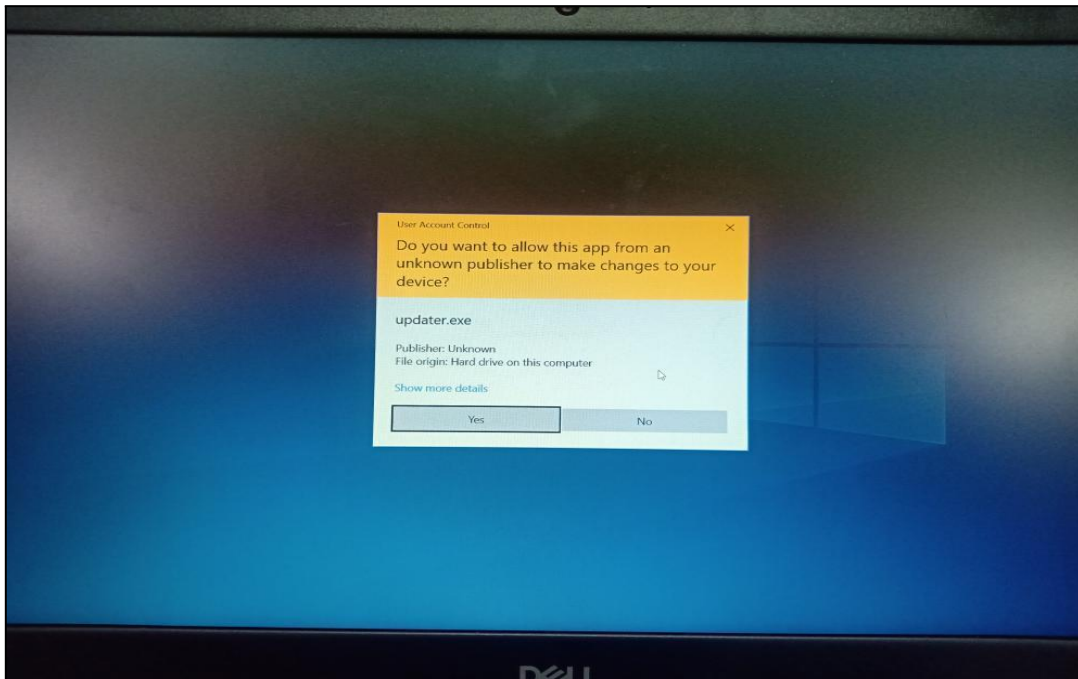


Pic-9

Early Digital Learning Programme

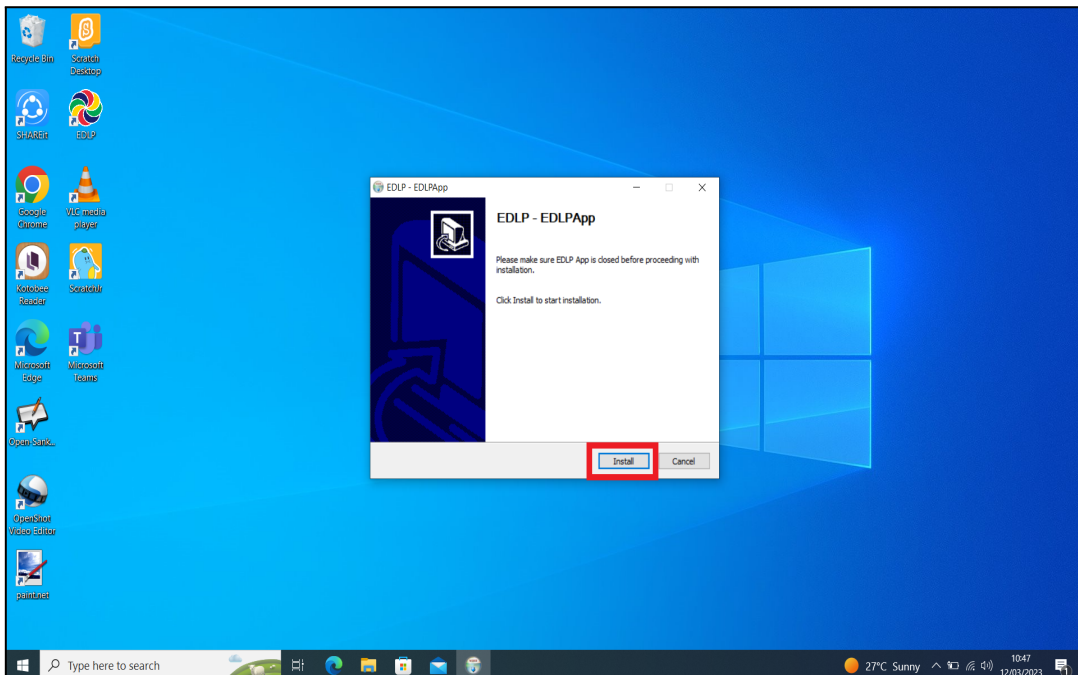
WPF Update Guidance Version – 1.12.24 for Teacher Laptop

Step 5a: After clicking ok you will get the below screen and click on **Yes** and it starts installing downloaded updates and follow the steps below.



Pic-10

Step 5b: It pops up the window showing "Install", now click on "Install" and follow the steps below.

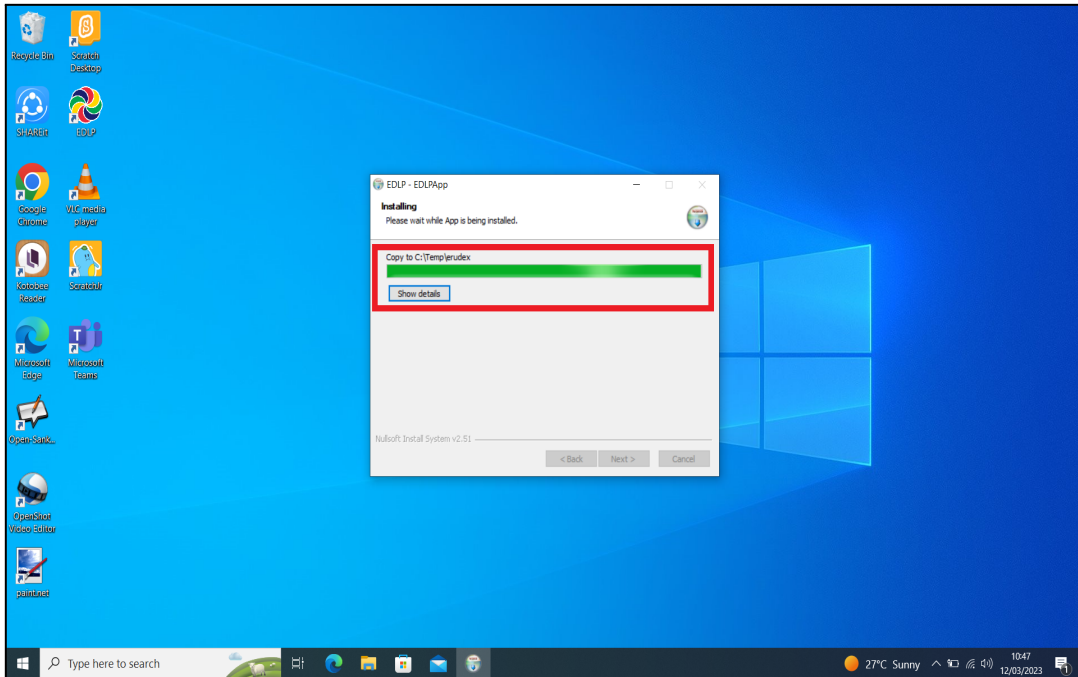


Pic-11

Early Digital Learning Programme

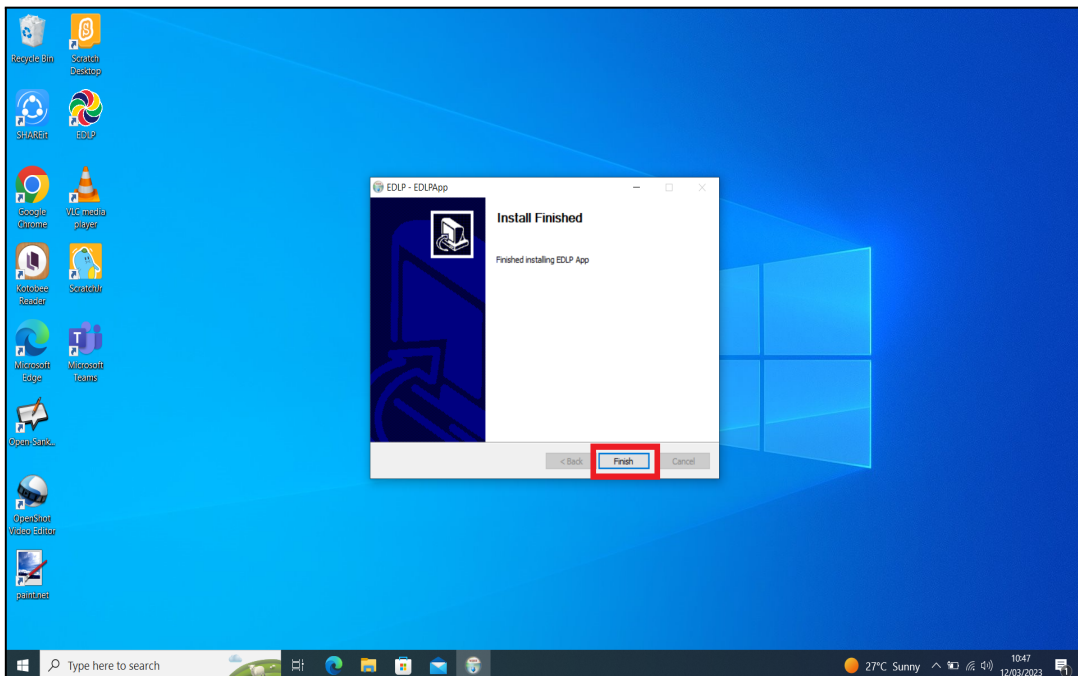
WPF Update Guidance Version – 1.12.24 for Teacher Laptop

Step 5c: It shows as below the Update is getting installed. If prompted, click on "Next>".



Pic-12

Step 5d: Now click on Finish. The window will be closed.

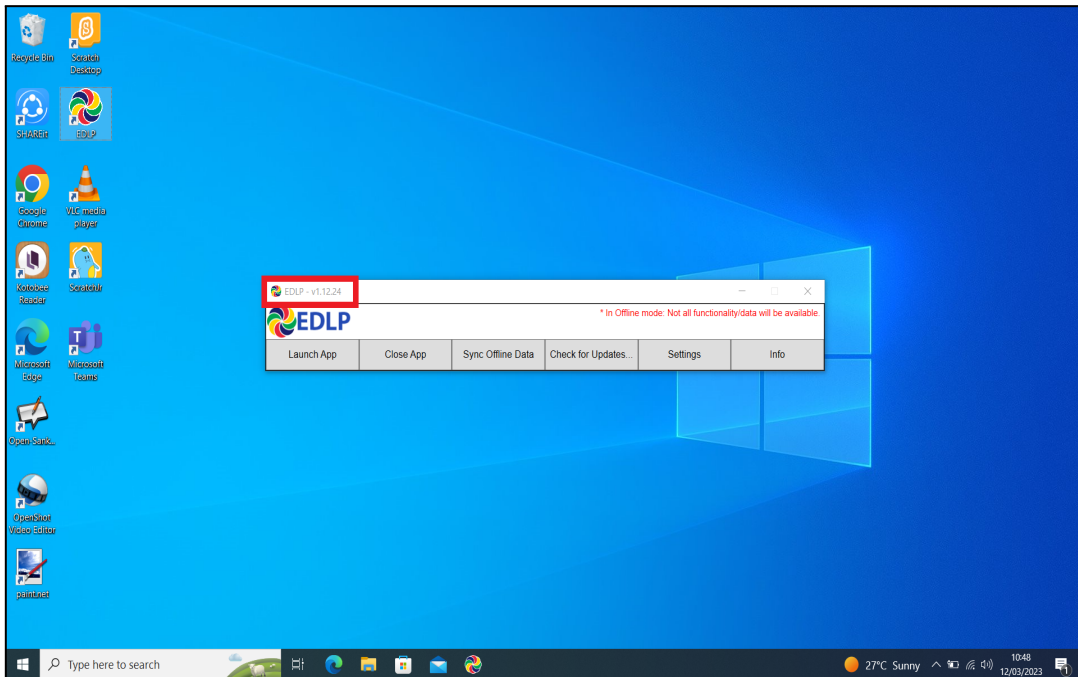


Pic-13

Early Digital Learning Programme

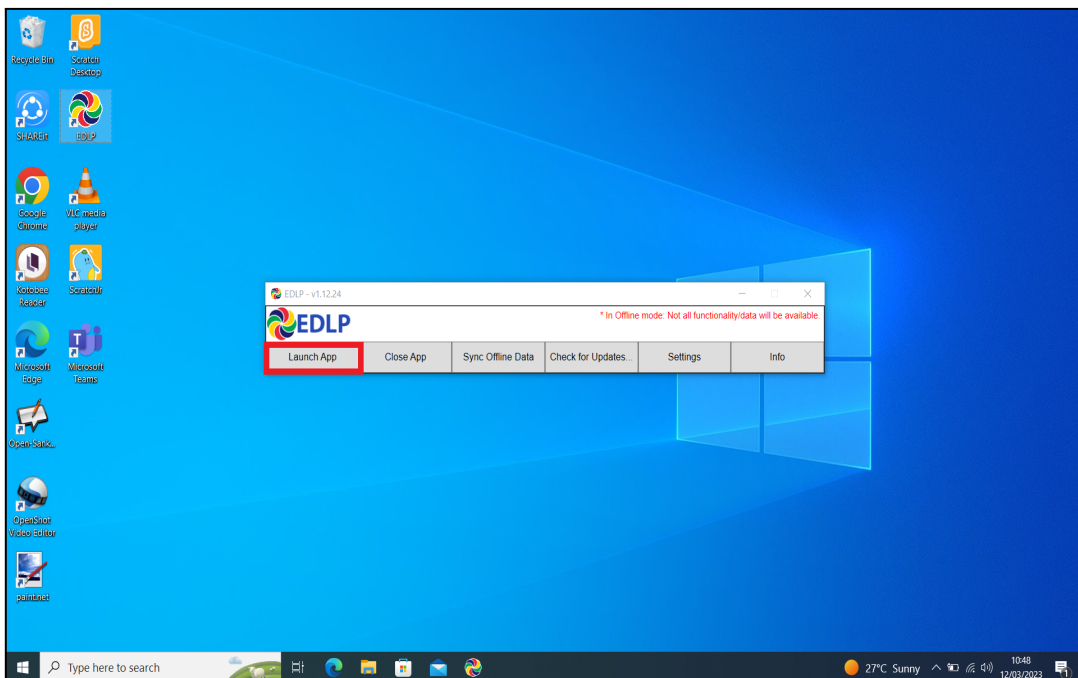
WPF Update Guidance Version – 1.12.24 for Teacher Laptop

Step 6: Click on the EDLP logo to start the application, now we can find the Updated version i.e., **v1.12.24**



Pic-14

Step 7: Now Click on 'Launch App' and it will take you to Chrome browser by default to use Offline Application.

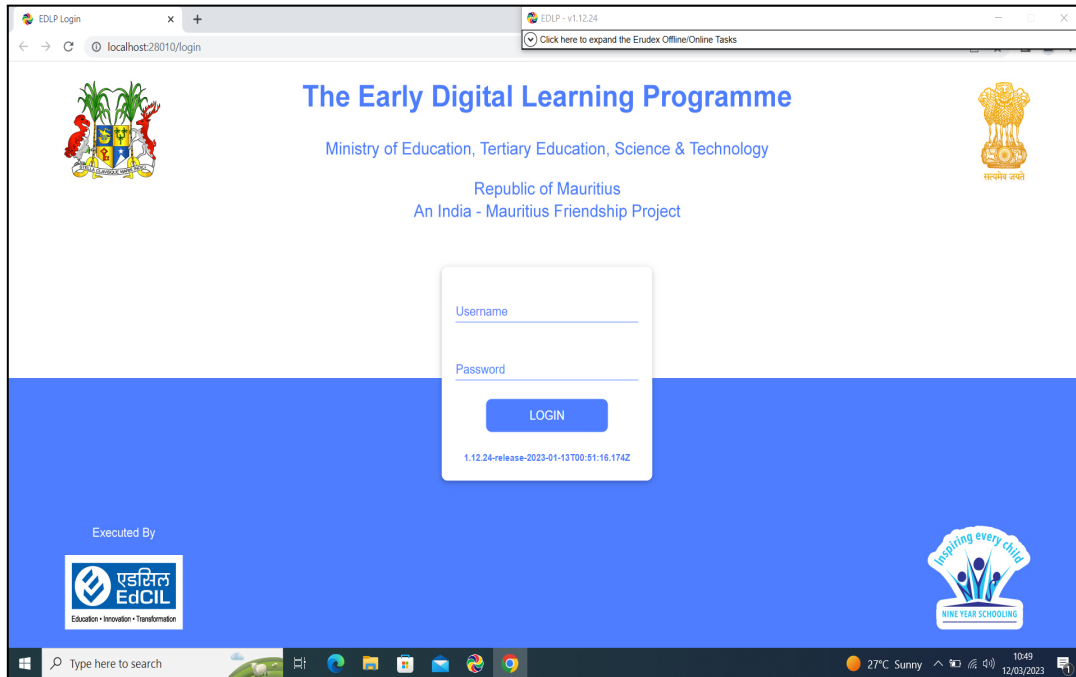


Pic-15

Early Digital Learning Programme

WPF Update Guidance Version – 1.12.24 for Teacher Laptop

Step 8: It looks like the picture below after opening in Chrome browser and you should enter your username and password provided by the Ministry and start using the application.



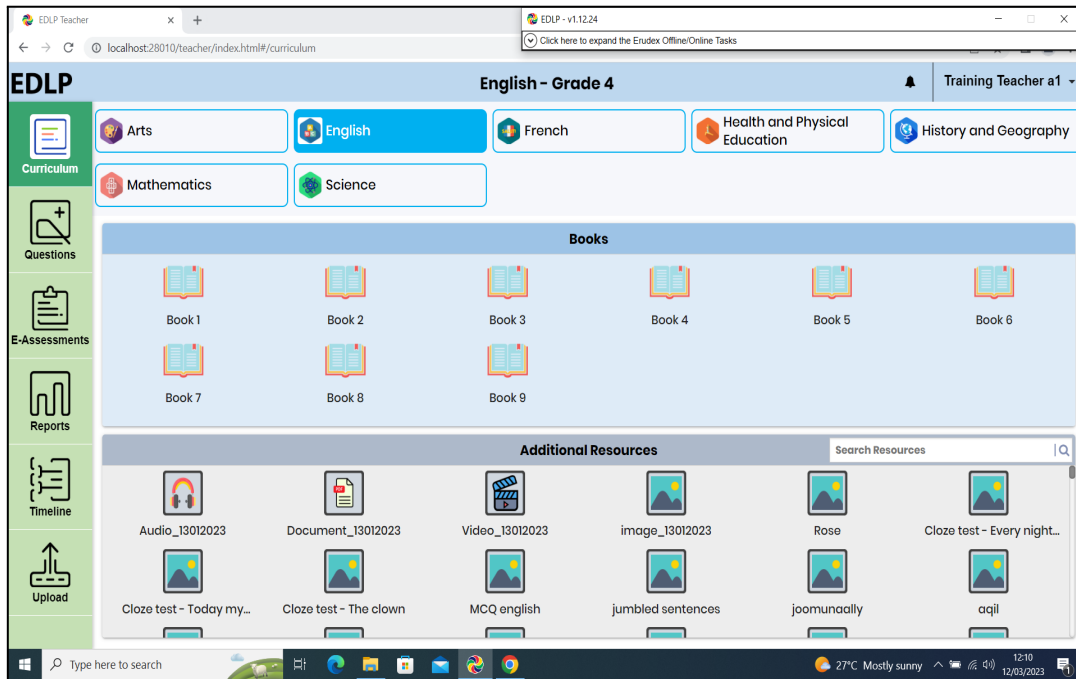
Pic-16

Note: To clear old 'Cache' memory press **Ctrl+Shift+R** at a time and refresh the page for at least 2-3 times.

Early Digital Learning Programme

WPF Update Guidance Version – 1.12.24 for Teacher Laptop

Step 9: After Login screen looks like this with the Teacher name on Top of the table on the right side.



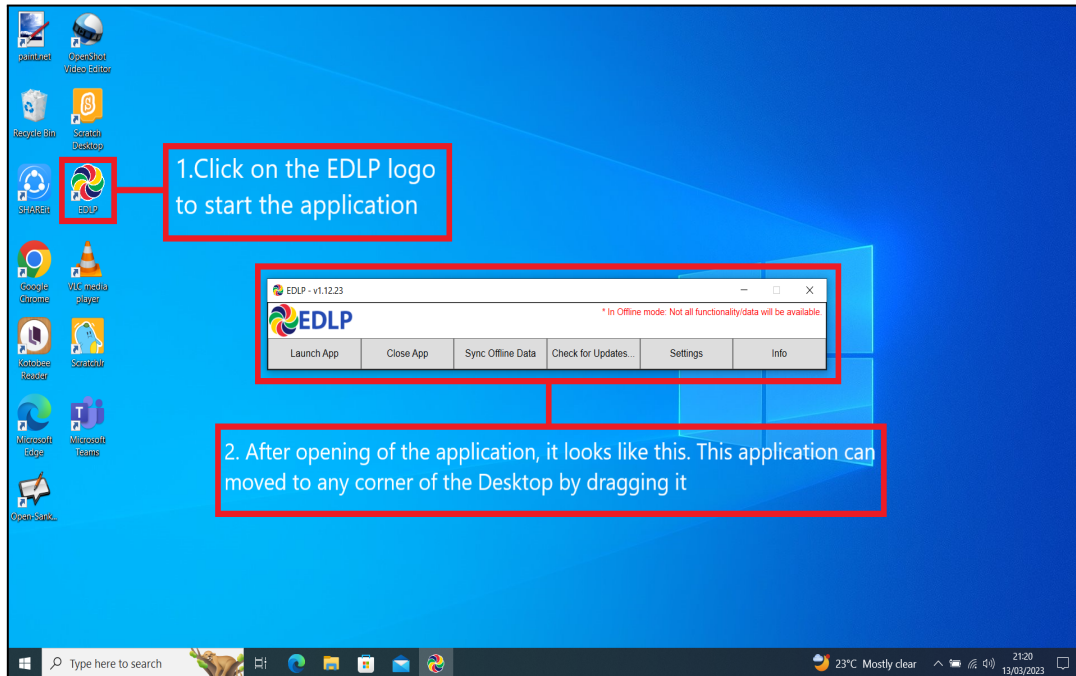
Pic-17

Early Digital Learning Programme

WPF Update Guidance Version – 1.12.24 for Teacher Laptop

1b. Offline Method - Mandatory Update of the WPF application to v1.12.24:

Step 1: Click on the EDLP logo to start the application. After opening the application, it looks like this as shown in the Pic-1.



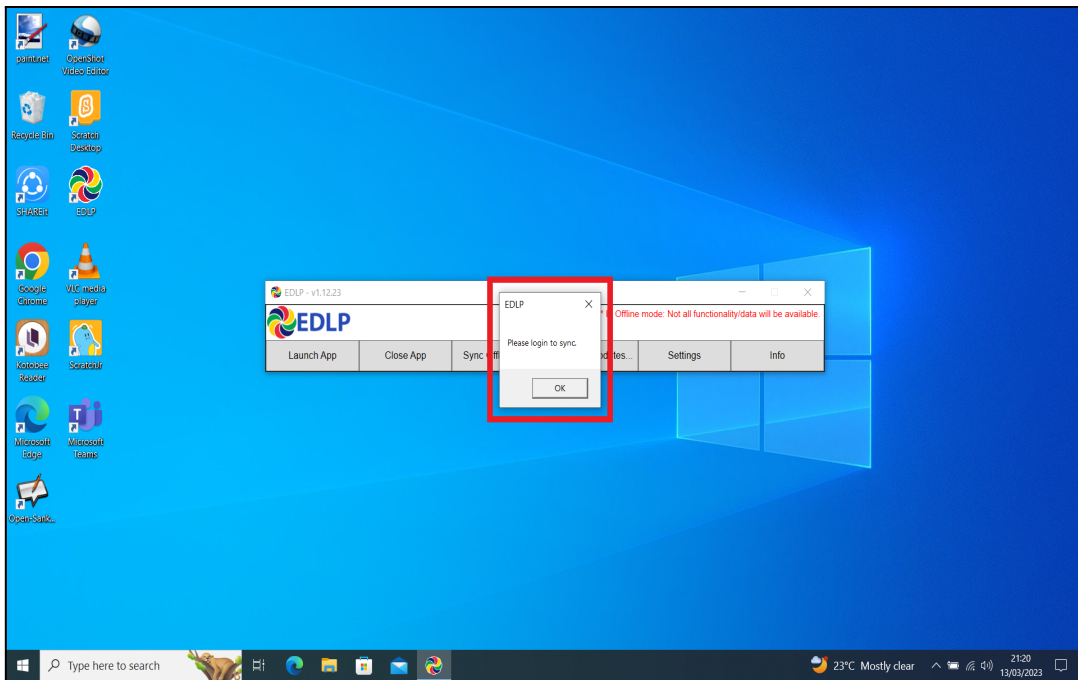
Pic-1

Before starting the updating of WPF Application, we need to do the “Sync Offline Data” process. So, if there is any data available in local storage it will be uploaded to the server synced with the **Teacher User id and password** and when the Application is updated and no data will be missed. Please follow below process:

If “Sync Offline Data” is clicked without logging in, The Syncing process won't start. Please note that we need to be logged in before starting the Syncing Process.

Early Digital Learning Programme

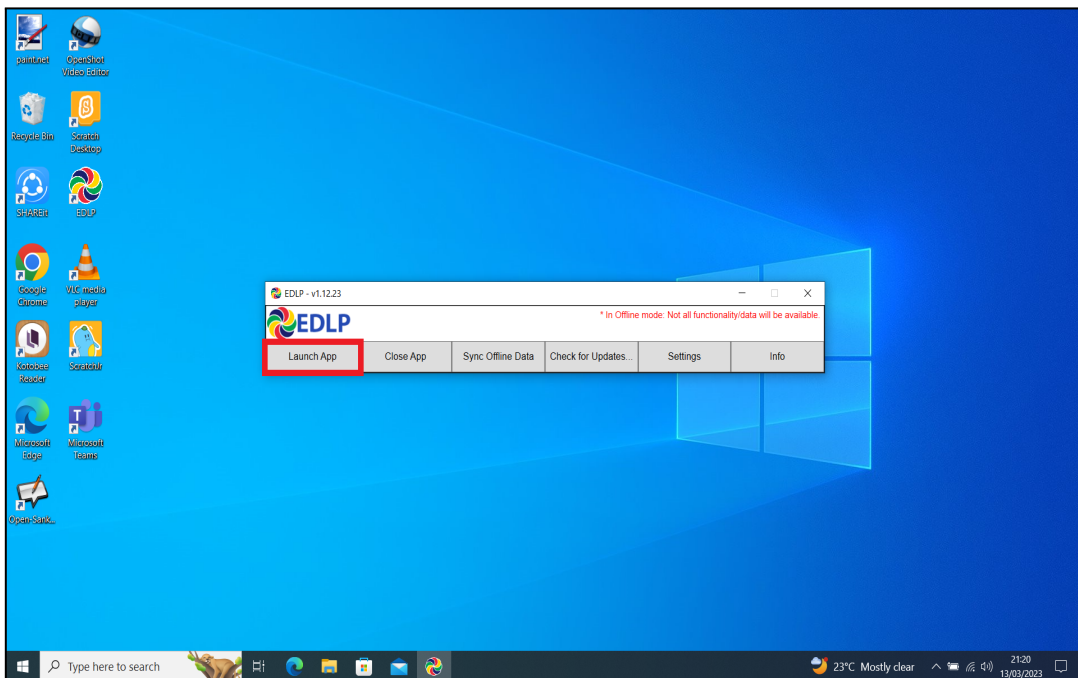
WPF Update Guidance Version – 1.12.24 for Teacher Laptop



Pic-2

Note: Please Note that the User credential credentials used for syncing, the same to be used for logging in after updating the WPF Application

Step 2a: Click on "Launch App".

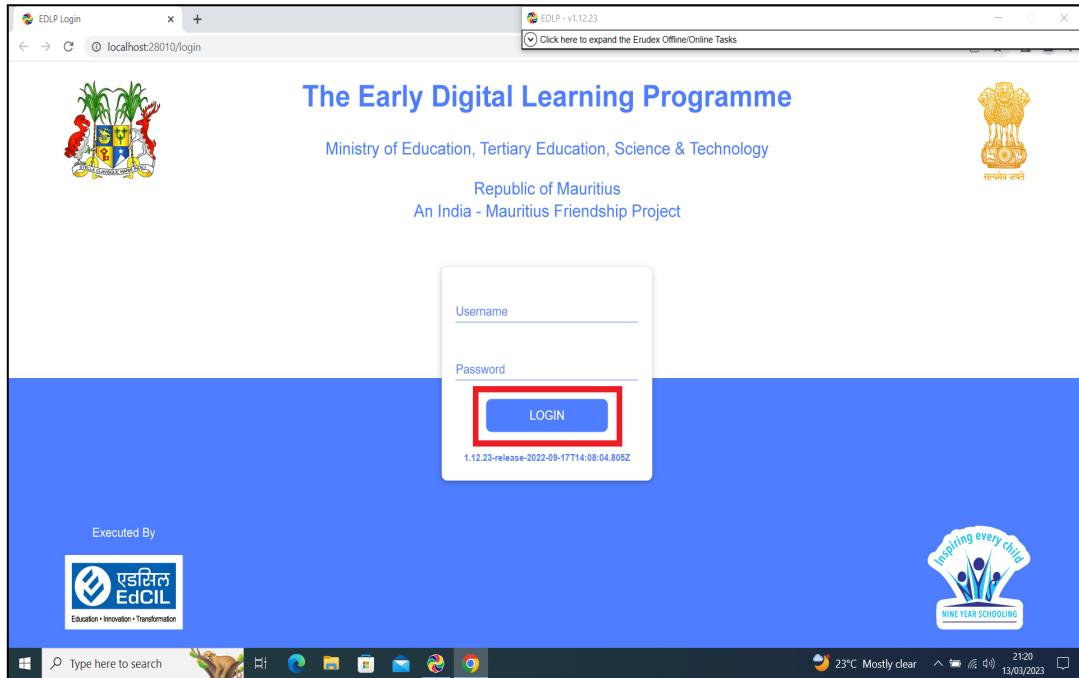


Pic-3

Early Digital Learning Programme

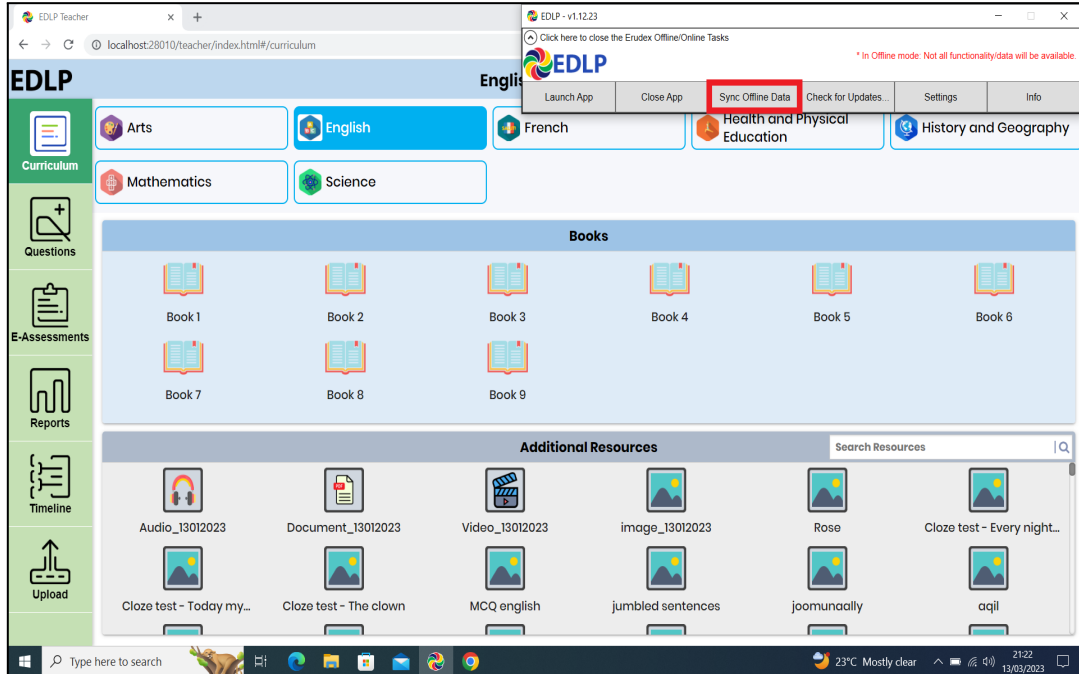
WPF Update Guidance Version – 1.12.24 for Teacher Laptop

Step 2b: Log-in with the Ministry provided **Teacher User id and password**.



Pic-4

Step 2c: Click on “Sync Offline Data”.

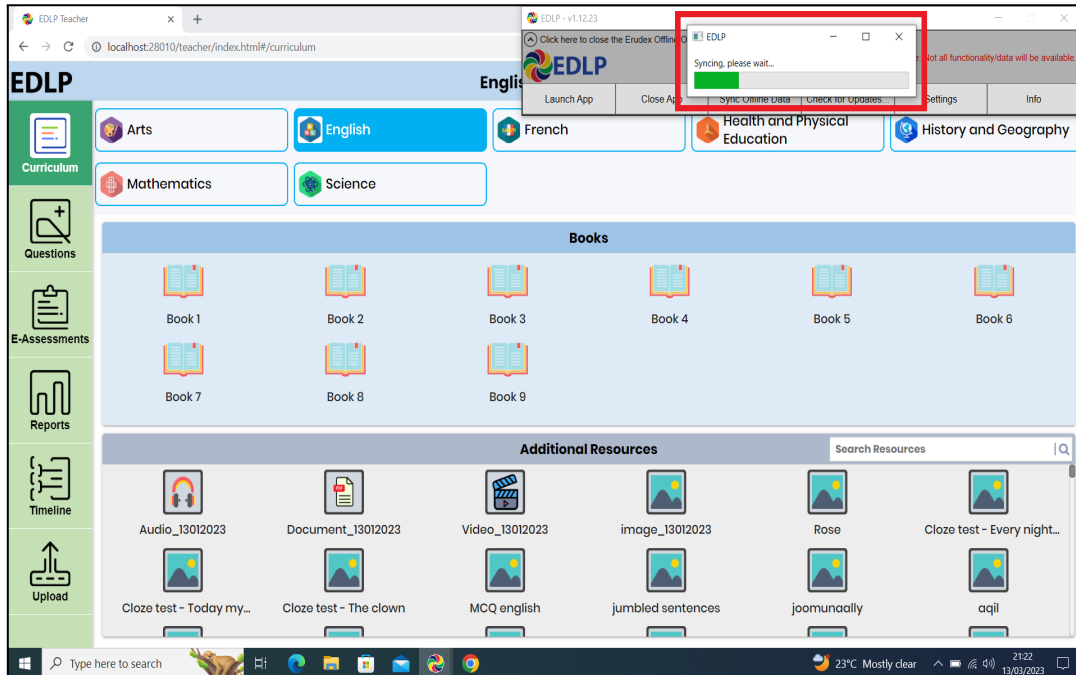


Pic-5

Early Digital Learning Programme

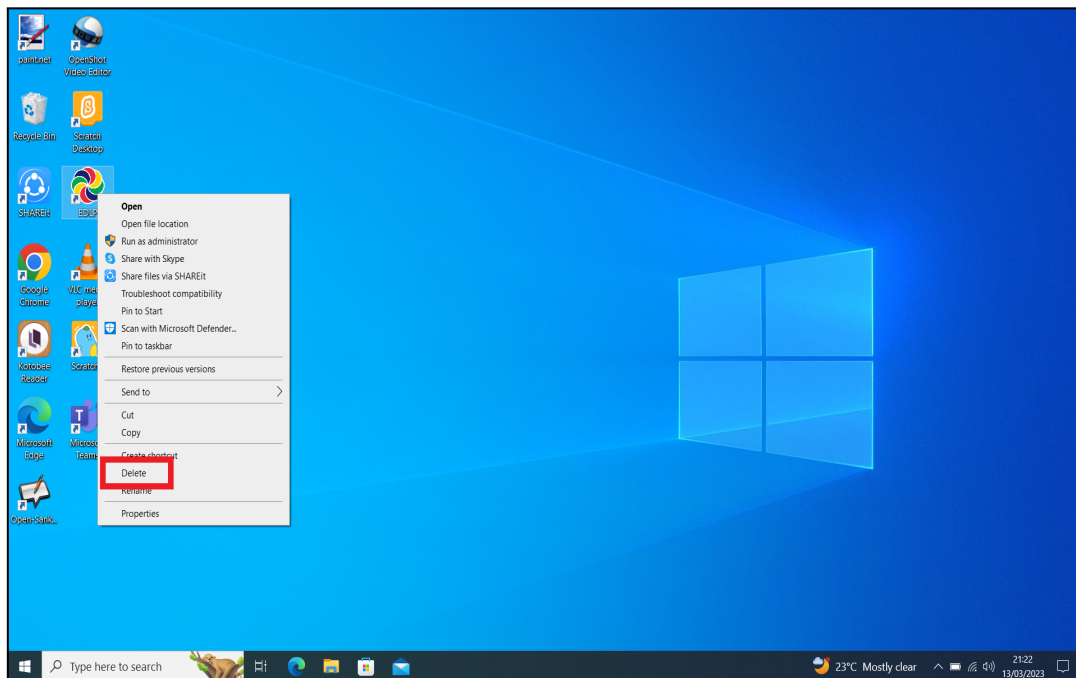
WPF Update Guidance Version – 1.12.24 for Teacher Laptop

Step 2d: Please wait till the Syncing process is completed.



Pic-6

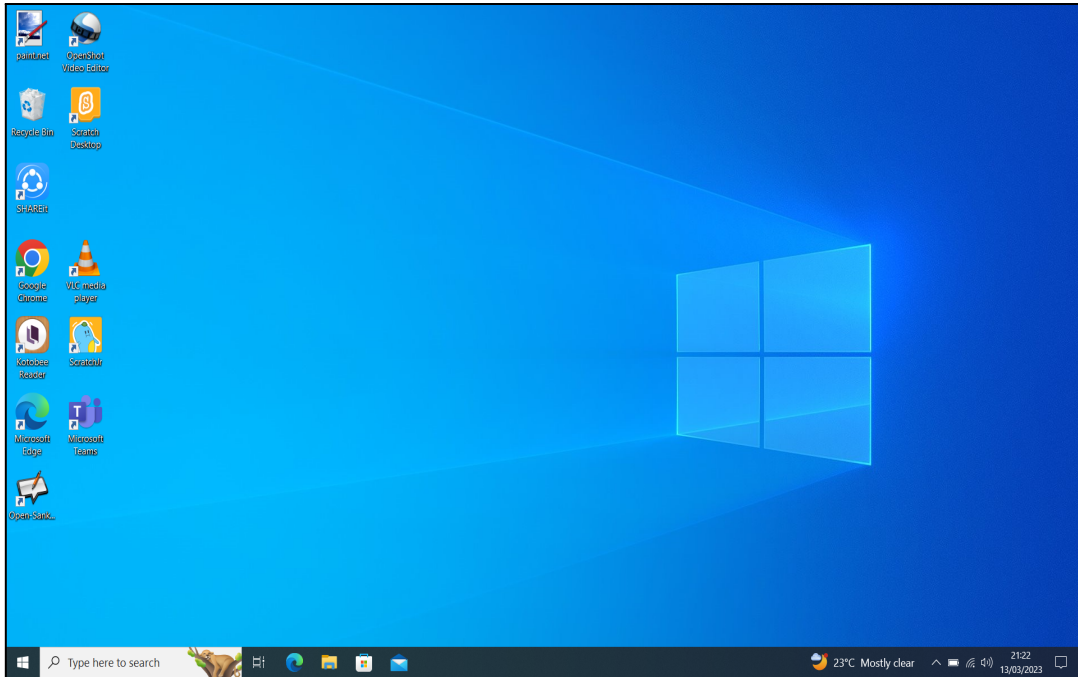
Step 3: Once the Syncing process is finished, now to update the WPF Application to new version of EDLP - **v1.12.24**, delete the available older version WPF application as shown in Pic-7 & Pic-8



Pic-7

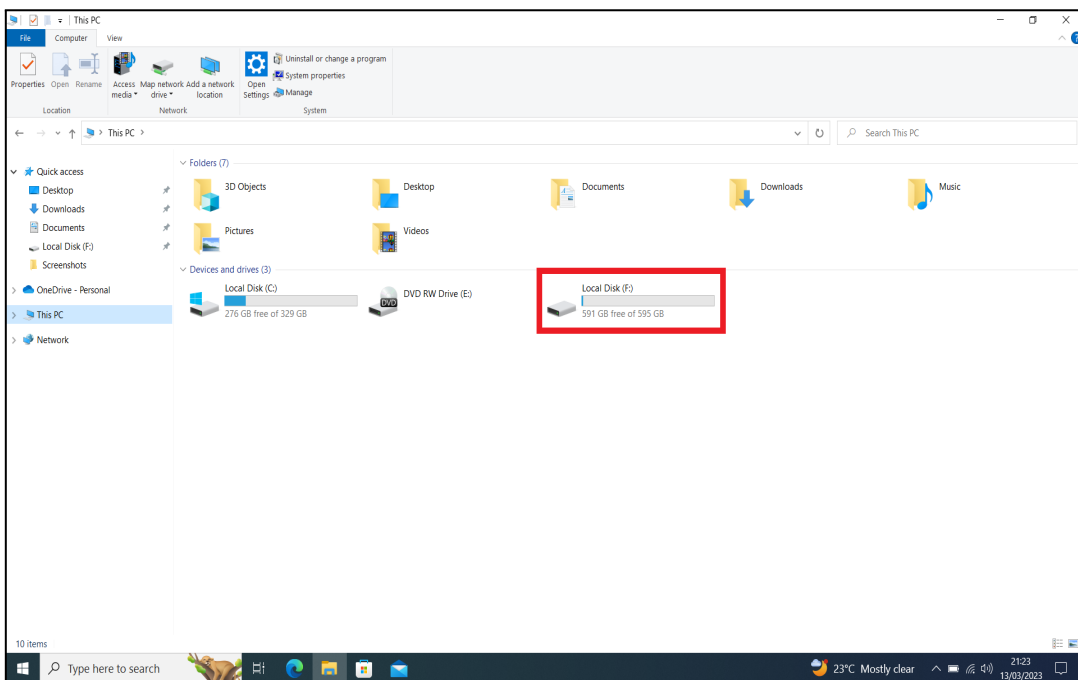
Early Digital Learning Programme

WPF Update Guidance Version – 1.12.24 for Teacher Laptop



Pic-8

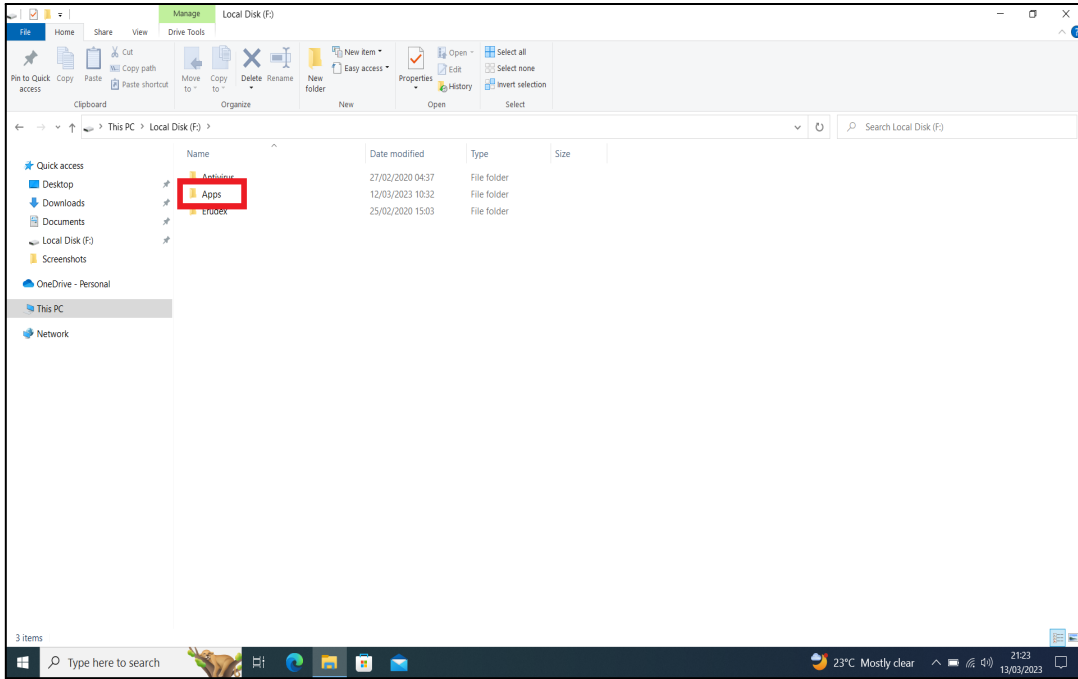
Step 4: Now, Open the **Local Disk** and then **Apps** folder as shown in Pic-9 & Pic-10



Pic-9

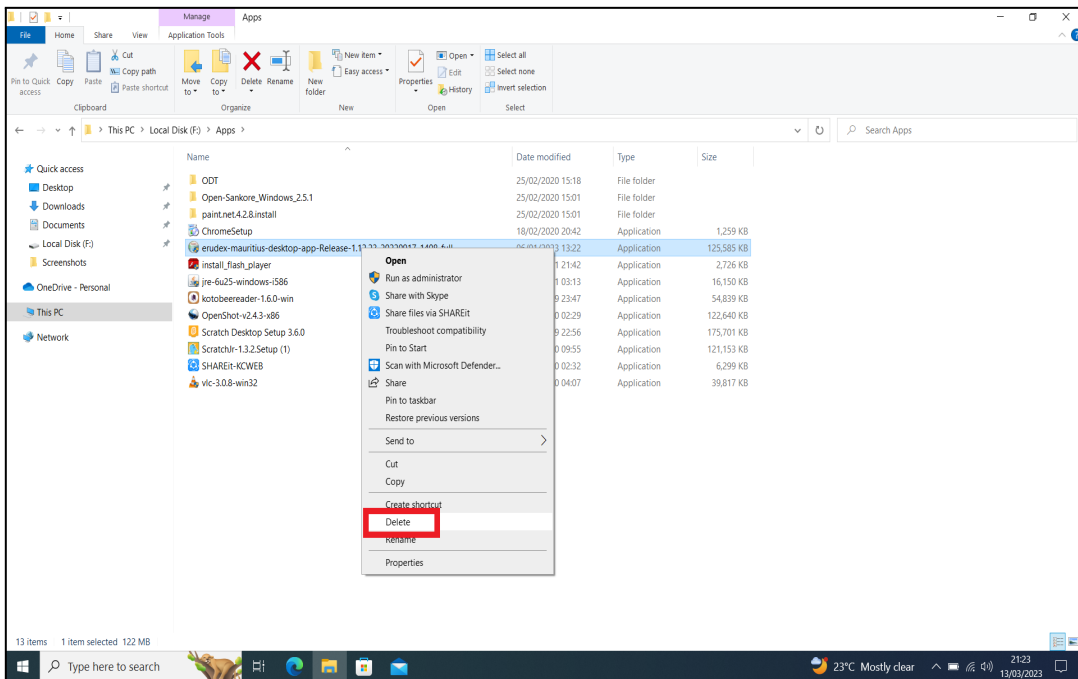
Early Digital Learning Programme

WPF Update Guidance Version – 1.12.24 for Teacher Laptop



Pic-10

Step 5: Delete the existing old version WPF Application



Pic-11

Early Digital Learning Programme

WPF Update Guidance Version – 1.12.24 for Teacher Laptop

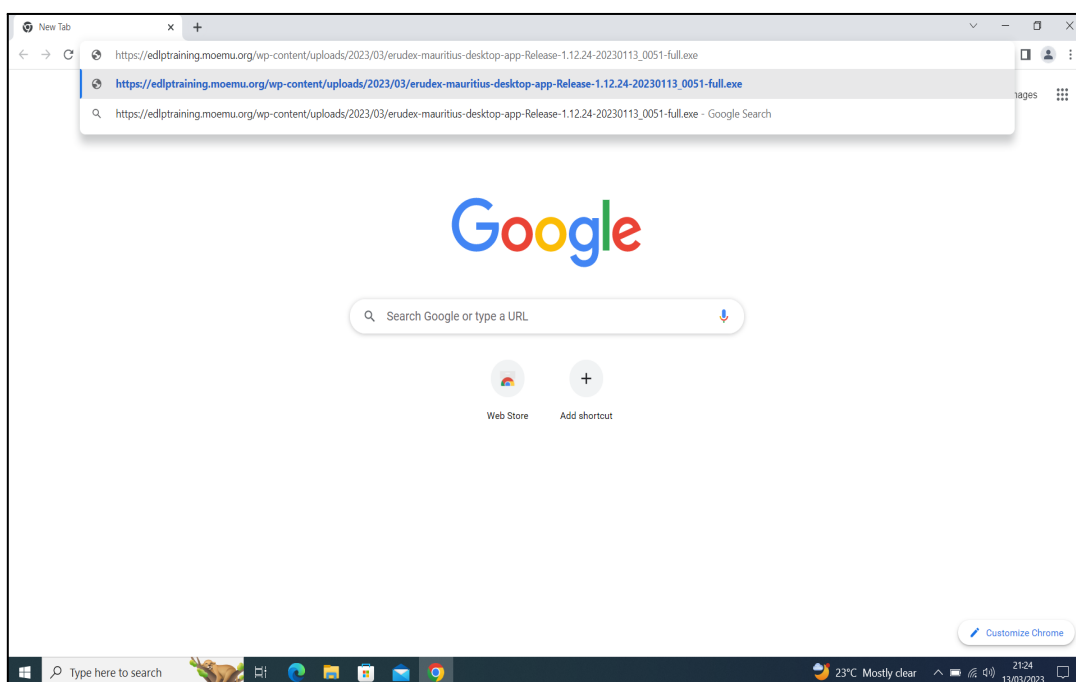
Step 6: To open the download link in Laptop follow the below steps (a & b):

Step 6a: Click the below link - it will download the application

https://edlptraining.moemu.org/wp-content/uploads/2023/03/erudex-mauritius-desktop-app-Release-1.12.24-20230113_0051-full.exe

(Or)

Step 6b: Type the above link in the chrome browser and press on enter the application will get downloaded.



PIC -12

Alternative method to download the application from the EDLP training site, click on the below link:

<https://edlptraining.moemu.org/content-application-repository/windows/>

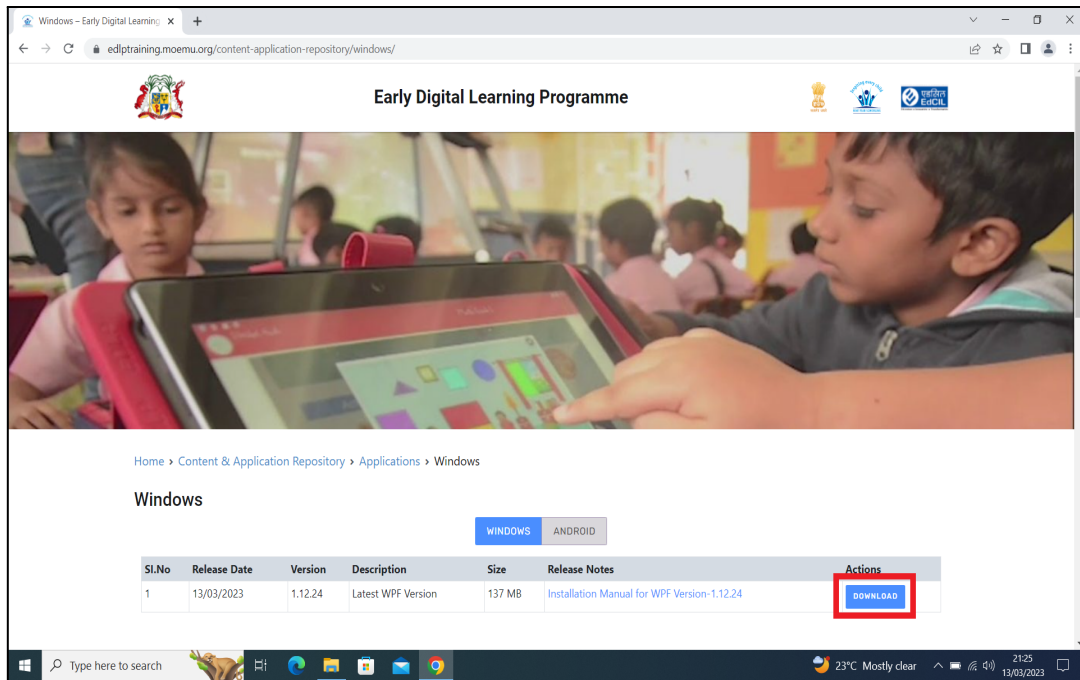
Or

Navigate through the website (<https://edlptraining.moemu.org>)

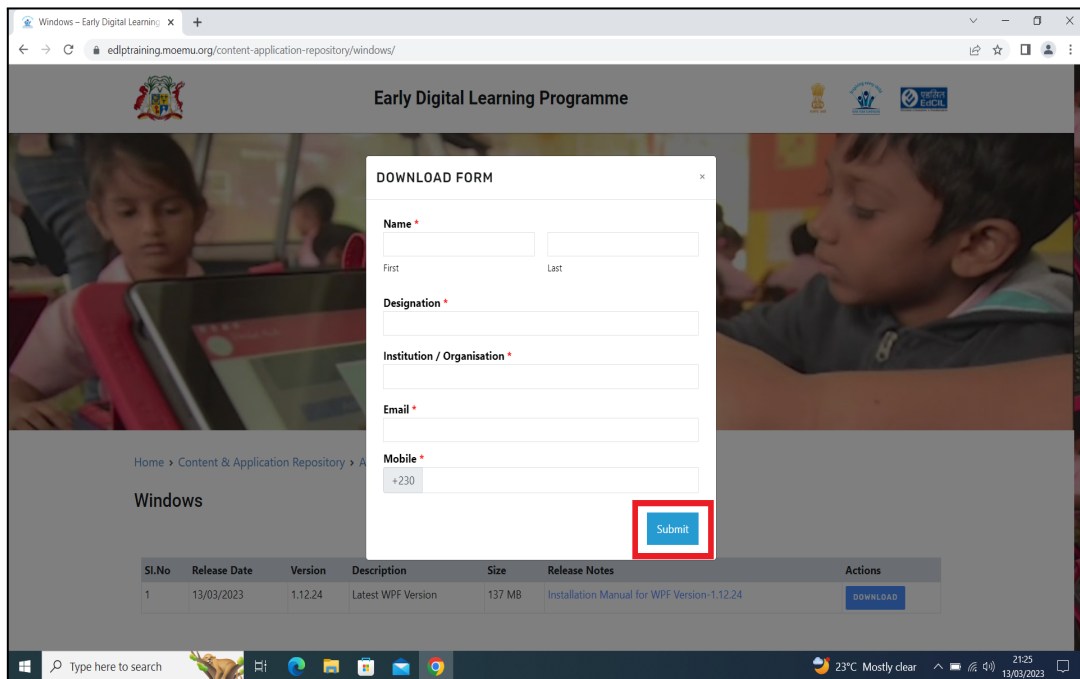
Home > Content & Application Repository> Application > Windows > Download > Fill Download Form and Submit > Download

Early Digital Learning Programme

WPF Update Guidance Version – 1.12.24 for Teacher Laptop



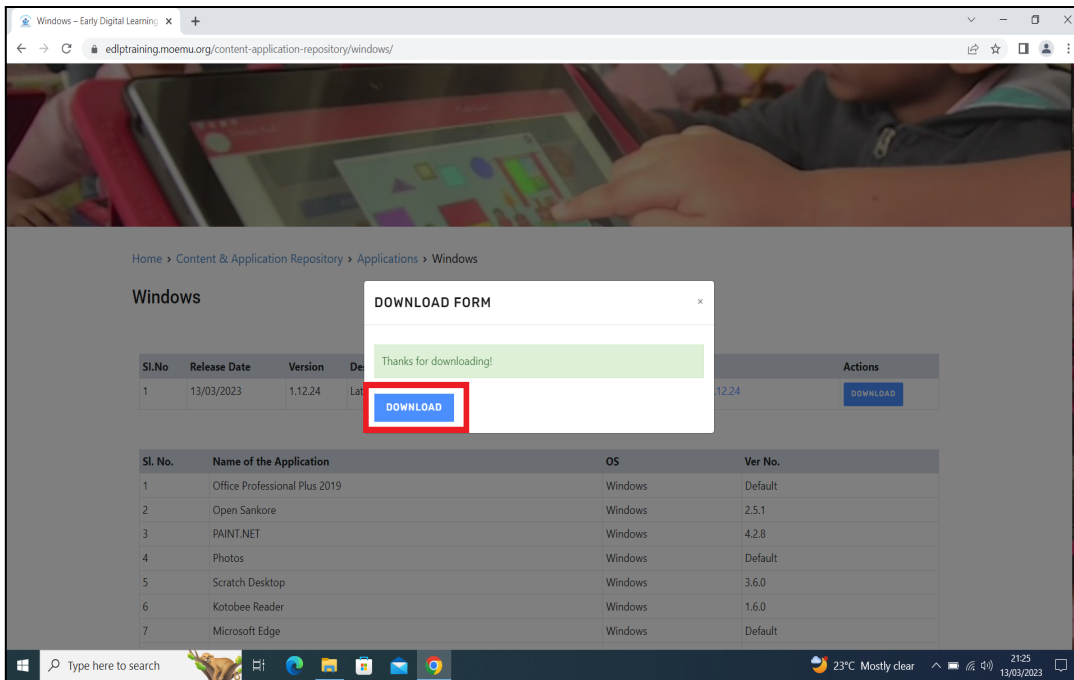
PIC -13



PIC -14

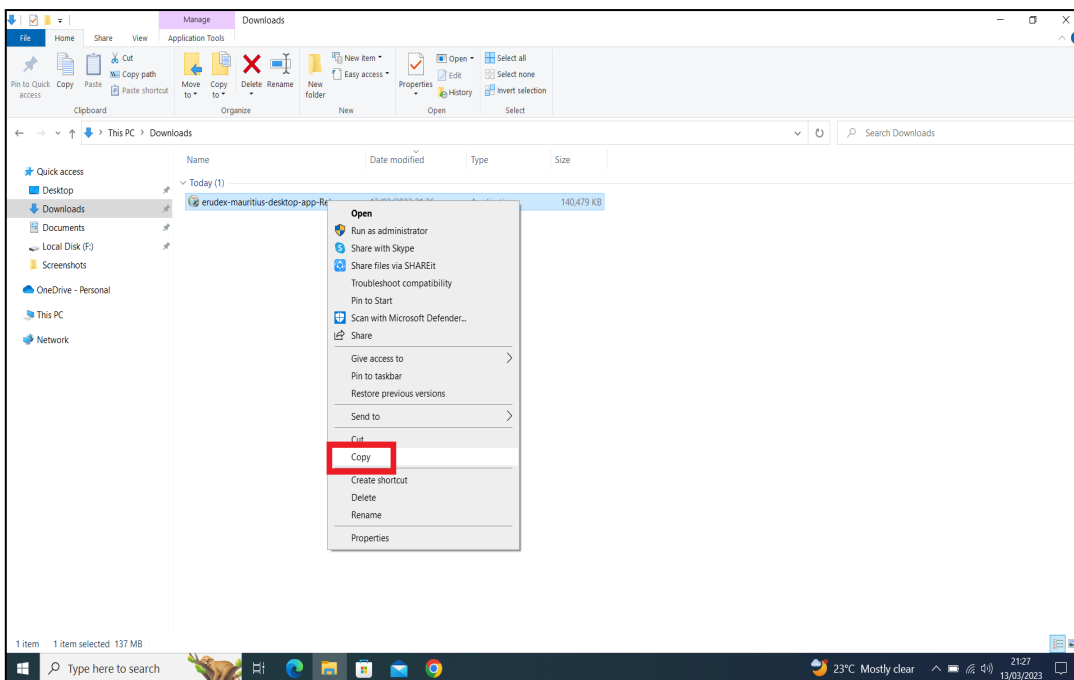
Early Digital Learning Programme

WPF Update Guidance Version – 1.12.24 for Teacher Laptop



PIC -15

Step 7: Open Downloads folder and Right click on the application and select to copy the application file from the System.



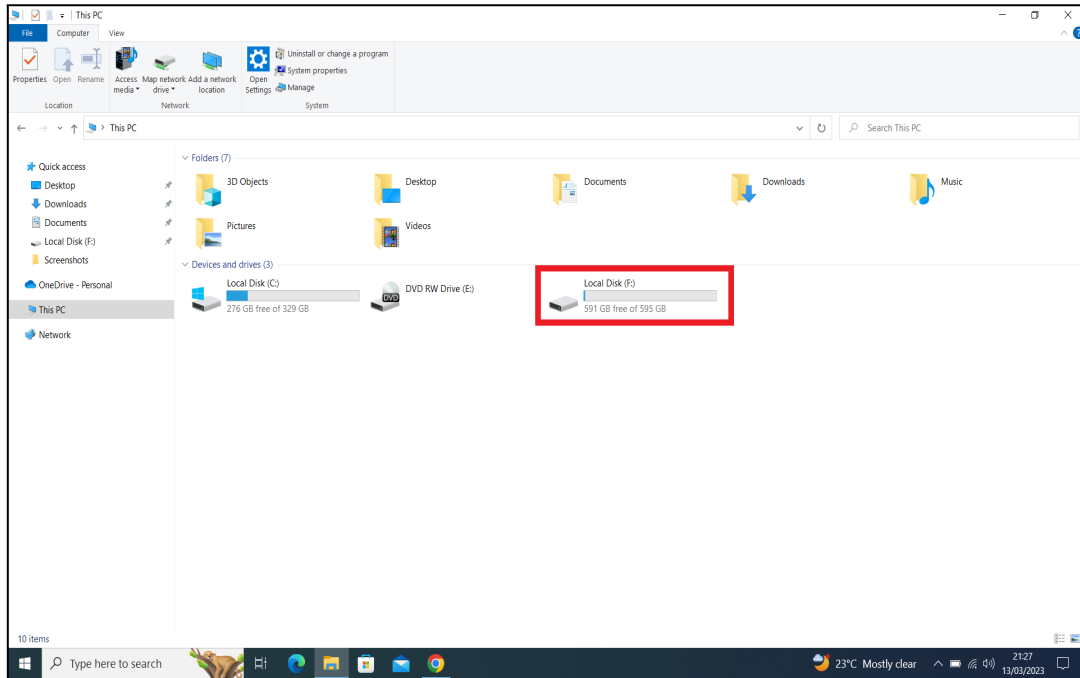
PIC -16

Note: If the Downloaded Application, is to be installed in different Laptop – From here it can be transferred using a Pen drive or any removable disk

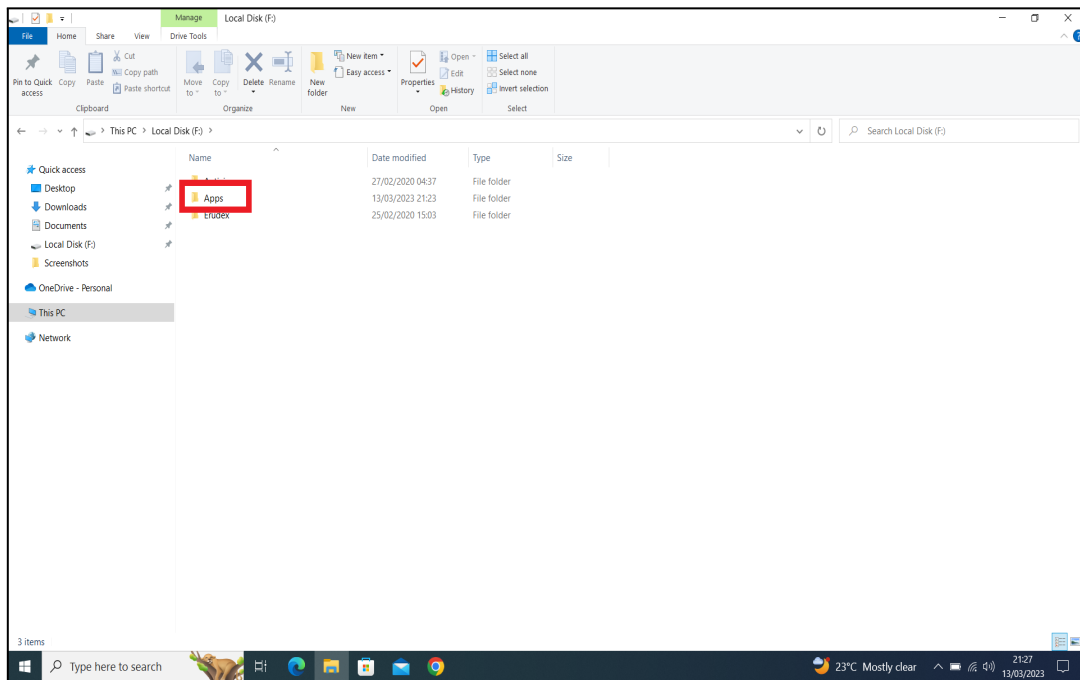
Early Digital Learning Programme

WPF Update Guidance Version – 1.12.24 for Teacher Laptop

Step 8: Now, Open the **Local Disk** and then **Apps** folder as shown in Pic-17 & Pic-18



PIC -17

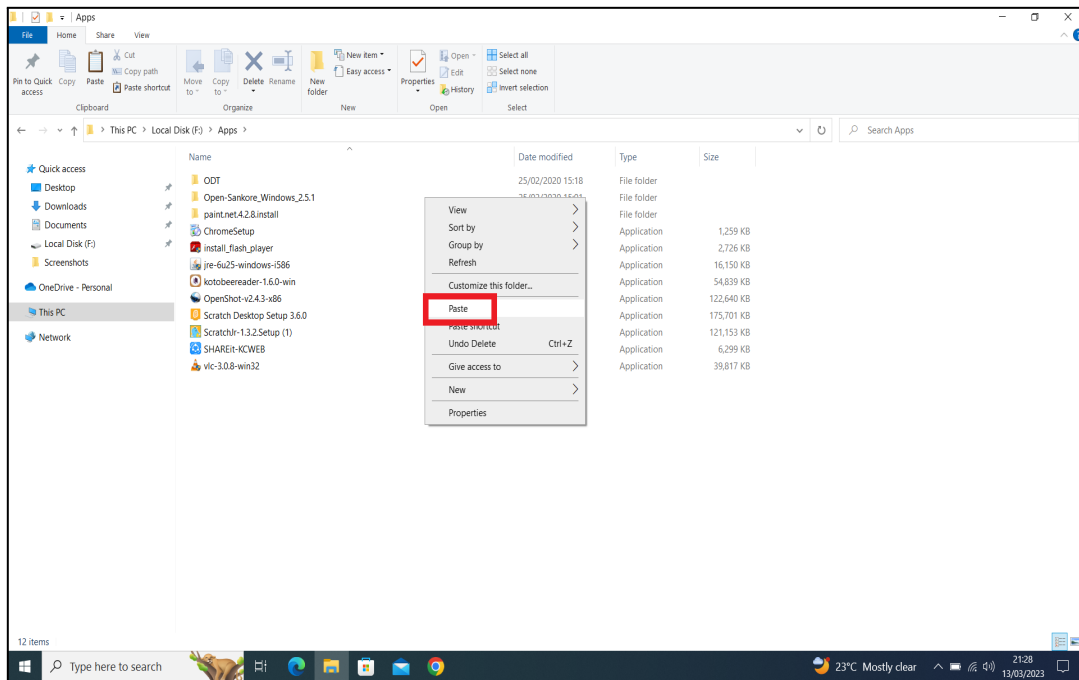


PIC -18

Early Digital Learning Programme

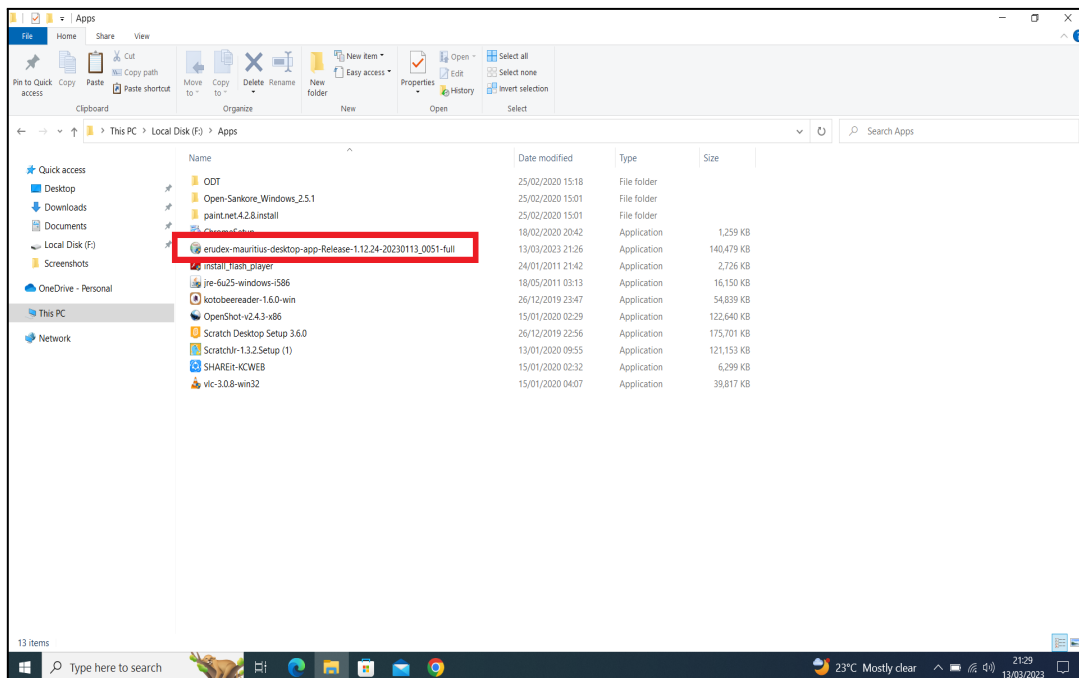
WPF Update Guidance Version – 1.12.24 for Teacher Laptop

Step 9: Paste the Latest version application in the **Apps** folder.



PIC -19

Step 10: Click on the "erudex-mauritius-desktop-app-Release-1.12.24-20220917_1408-full" as shown in the below Pic 20.

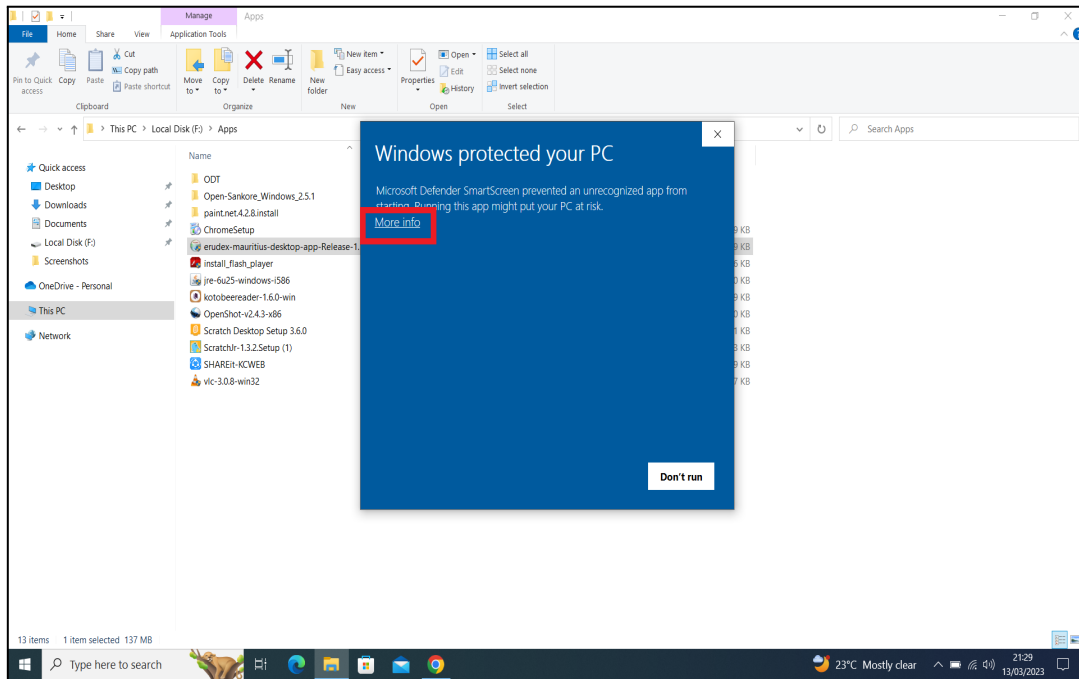


Pic-20

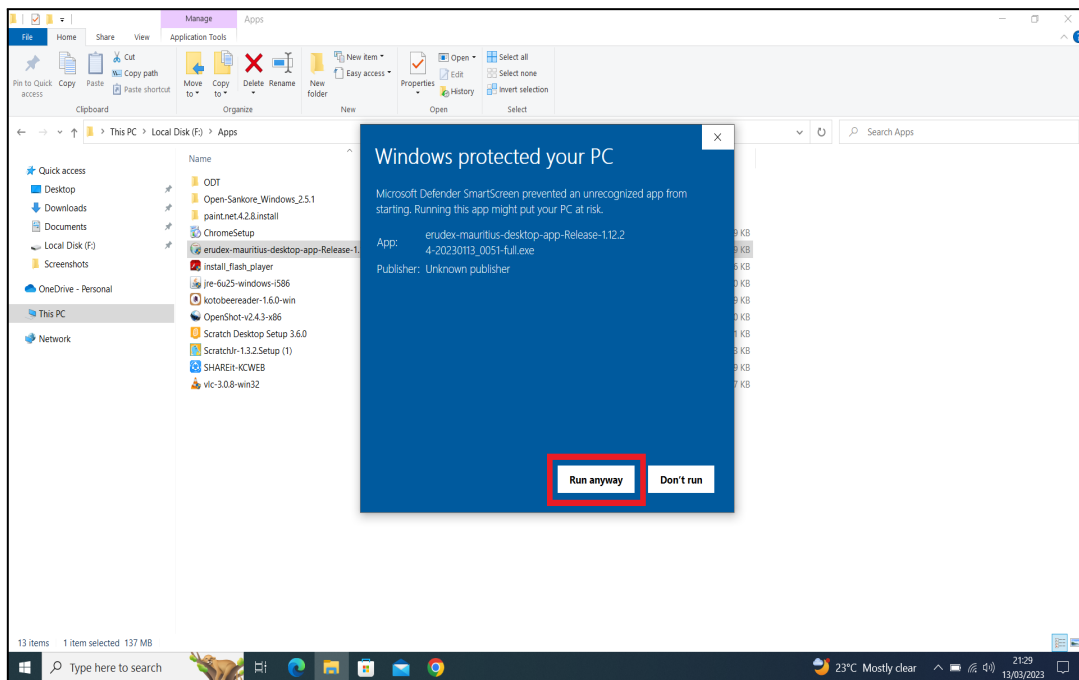
Early Digital Learning Programme

WPF Update Guidance Version – 1.12.24 for Teacher Laptop

Step 11: A Popup appears as “Windows protected your PC” click on **More info** and **Run anyway** as shown in Pic 21 & 22.



Pic-21

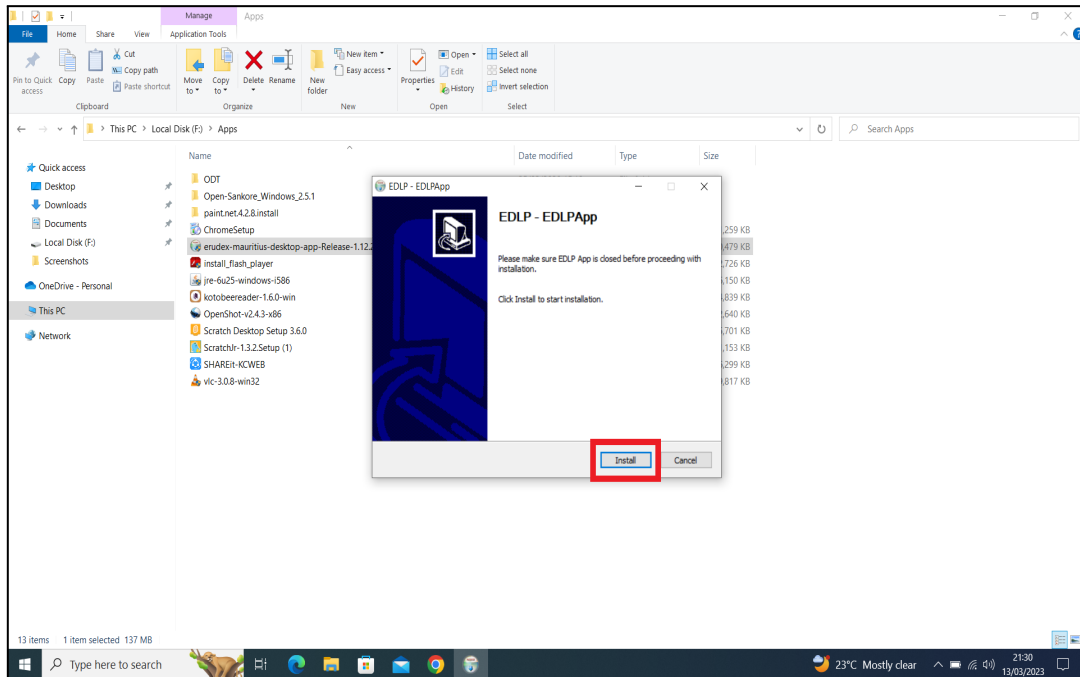


Pic-22

Early Digital Learning Programme

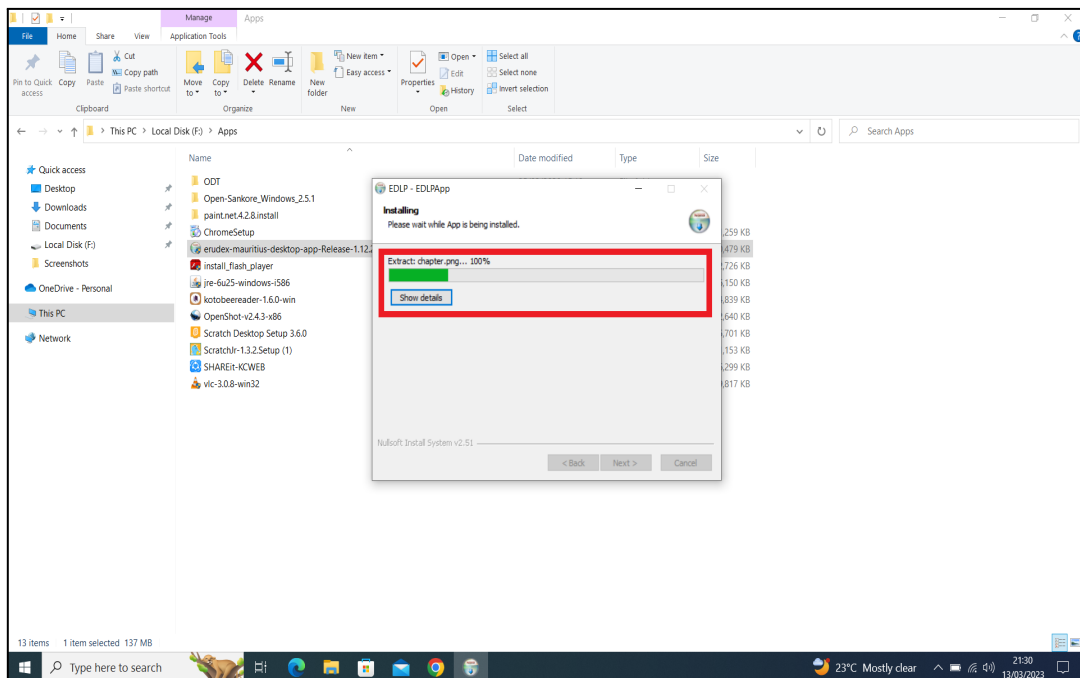
WPF Update Guidance Version – 1.12.24 for Teacher Laptop

Step 12: It pops up the window showing “Install”, now click on “Install” and follow the steps below.



Pic-23

Step 13: It shows as below the Update is getting installed. If prompted, click on “Next>”.

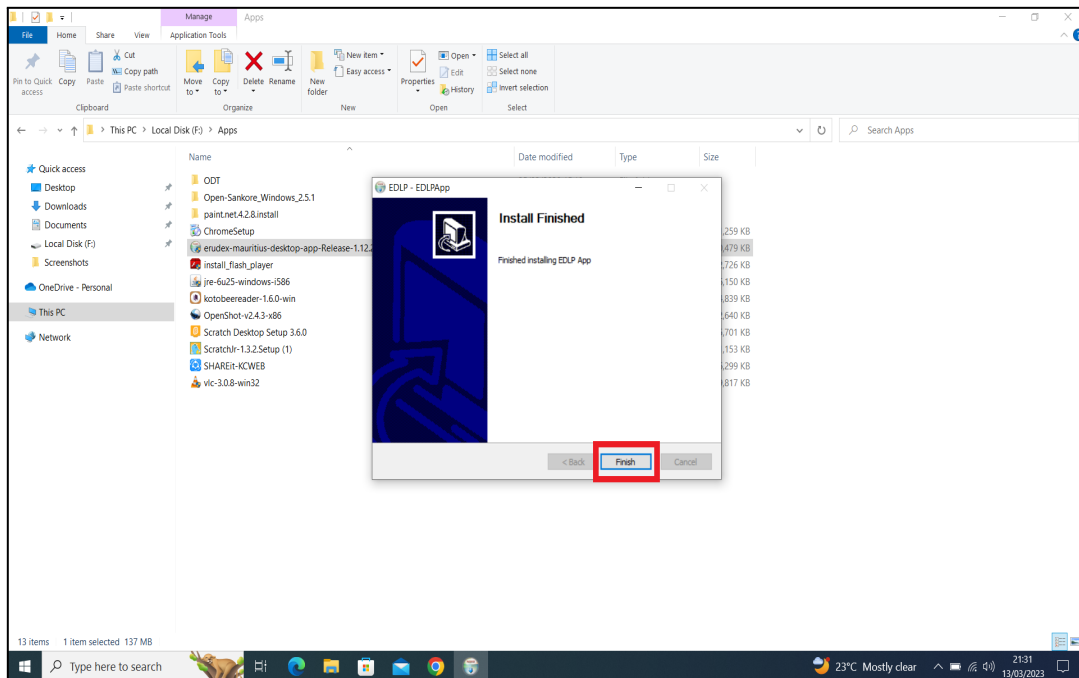


Pic-24

Early Digital Learning Programme

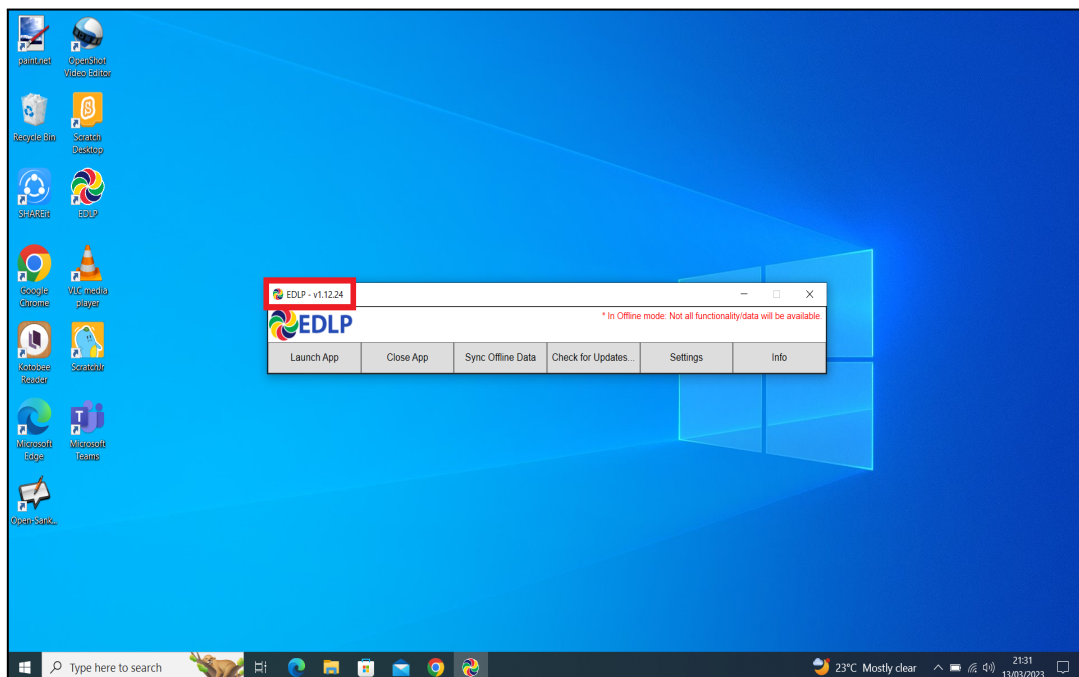
WPF Update Guidance Version – 1.12.24 for Teacher Laptop

Step 14: Now click on Finish. The window will be closed.



Pic-25

Step 15: Click on the EDLP logo to start the application, now we can find the Updated version i.e., **v1.12.24**

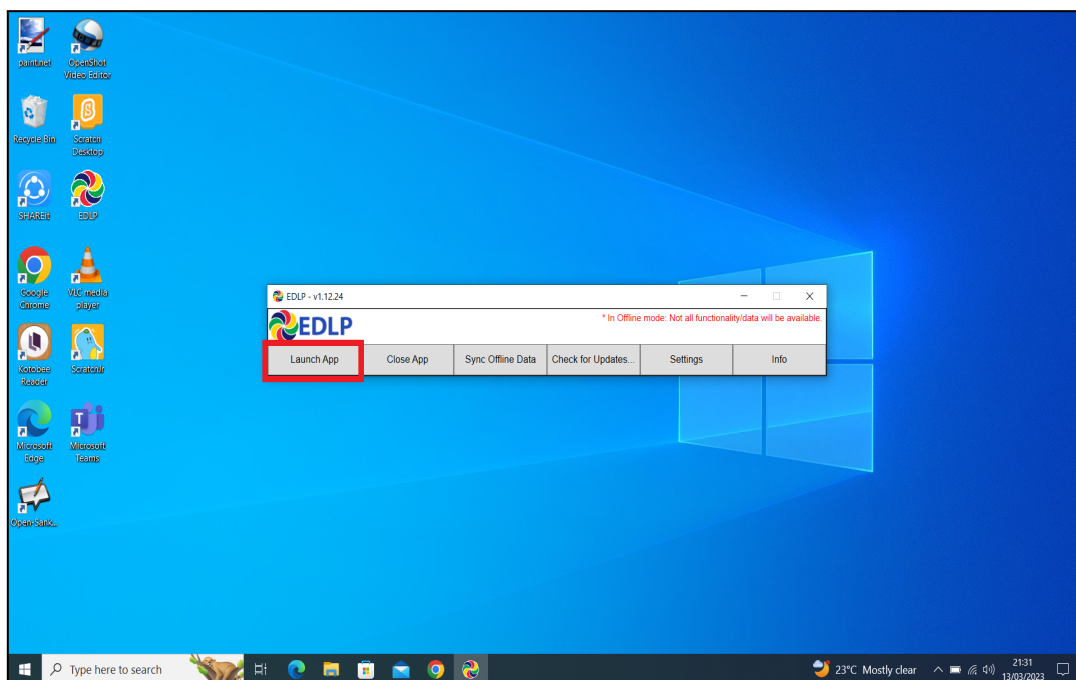


Pic-26

Early Digital Learning Programme

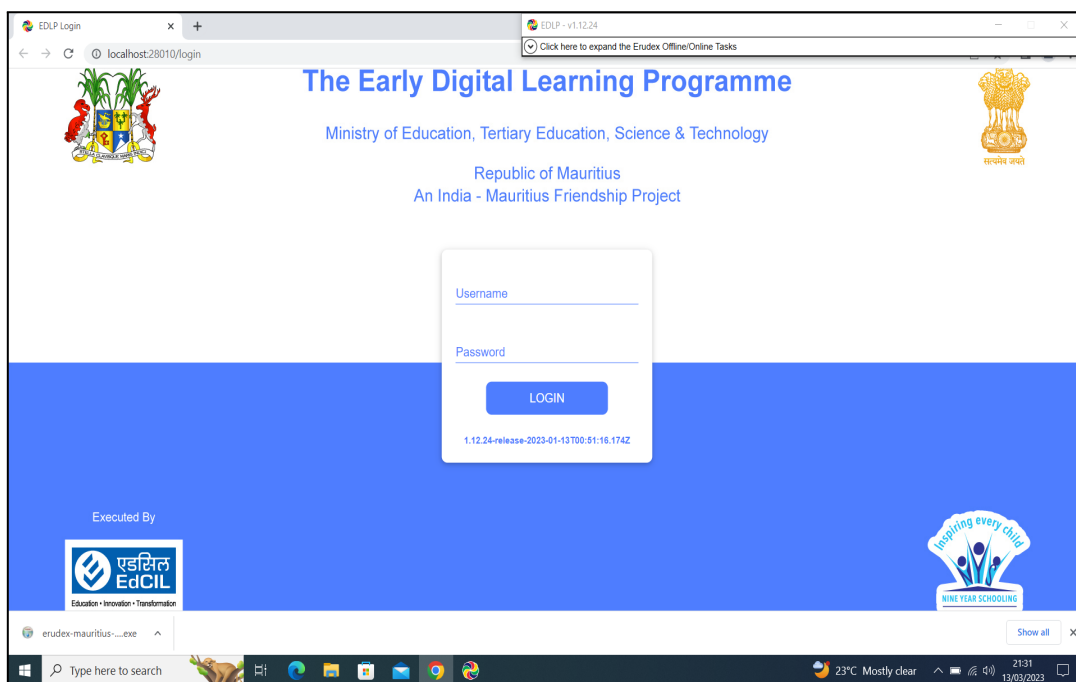
WPF Update Guidance Version – 1.12.24 for Teacher Laptop

Step 16: Now Click on Launch app and it will take you to Chrome browser by default to use Offline Application.



Pic-27

Step 17: It looks like the picture below after opening in Chrome browser and you should enter your username and password provided by the Ministry and start using the application.



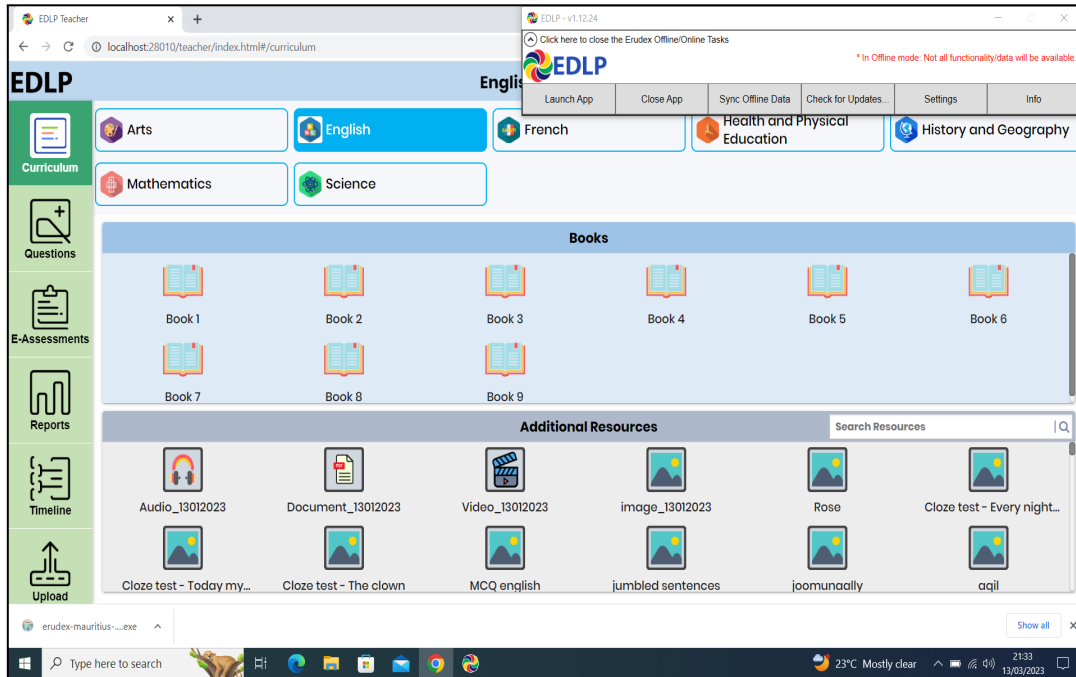
Pic-28

Early Digital Learning Programme

WPF Update Guidance Version – 1.12.24 for Teacher Laptop

Note: To clear old 'Cache' memory press **Ctrl+Shift+R** at a time and refresh the page for at least 2-3 times.

Step 18: After Login screen looks like this with the Teacher name on Top of the table on the right side.



Pic-29

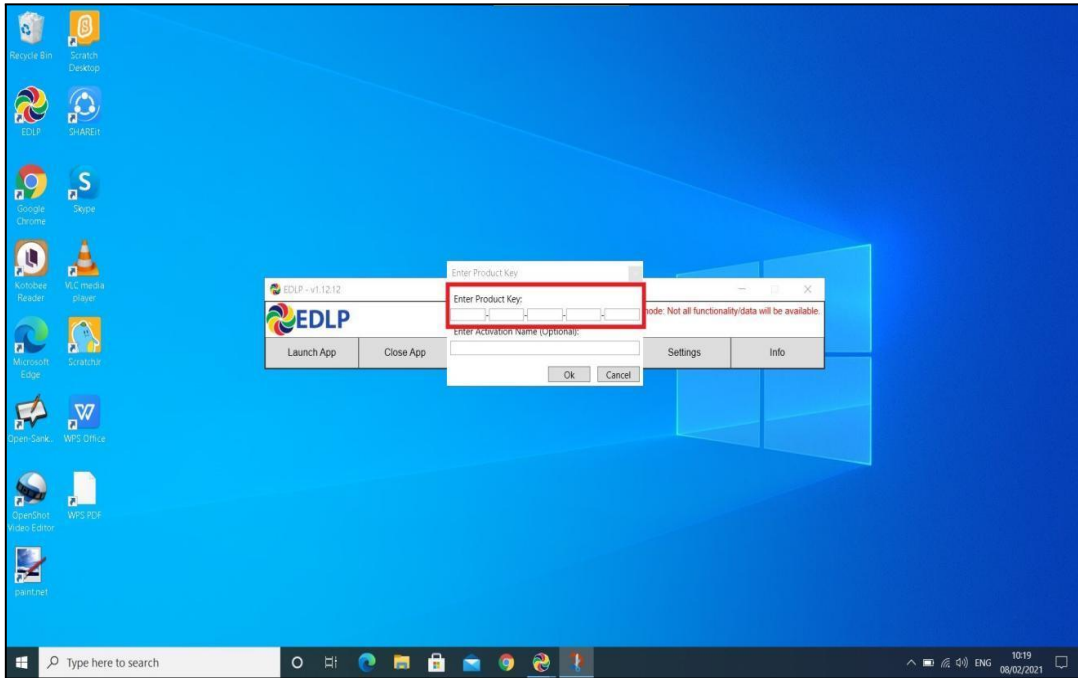
Early Digital Learning Programme

WPF Update Guidance Version – 1.12.24 for Teacher Laptop

Activation Key (For Ready Reference):

In case the WPF application asks for entering of the activation key then enter the activation key which is provided below and press OK for validation of the license:

Activation key: **4WVKR-3VK7M-1RR6L-UIPIXI-88PM6**



Pic-30

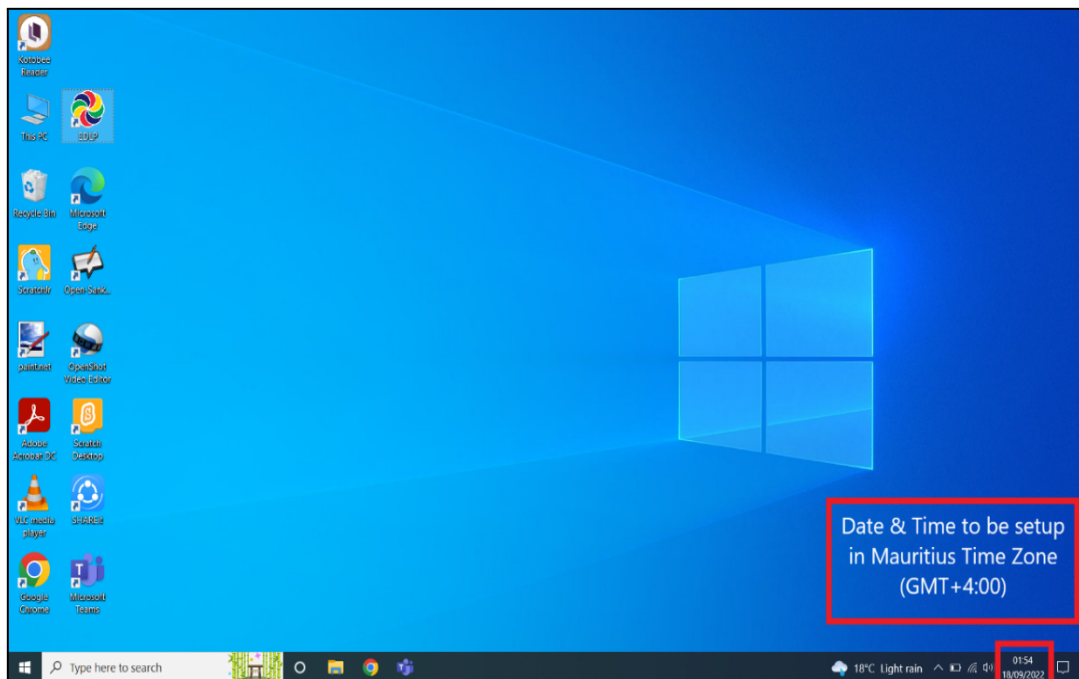
Early Digital Learning Programme
WPF Update Guidance Version – 1.12.24 for Teacher Laptop

PART - B

2.Preliminary Verification (for Ready Reference)

2a. Setting up of Date & Time (One Time Process)

Step 1: Date & Time to be in Mauritius Time Zone (GMT+4:00). If not, the laptop must be set up in Mauritius Time Zone.



Pic-1

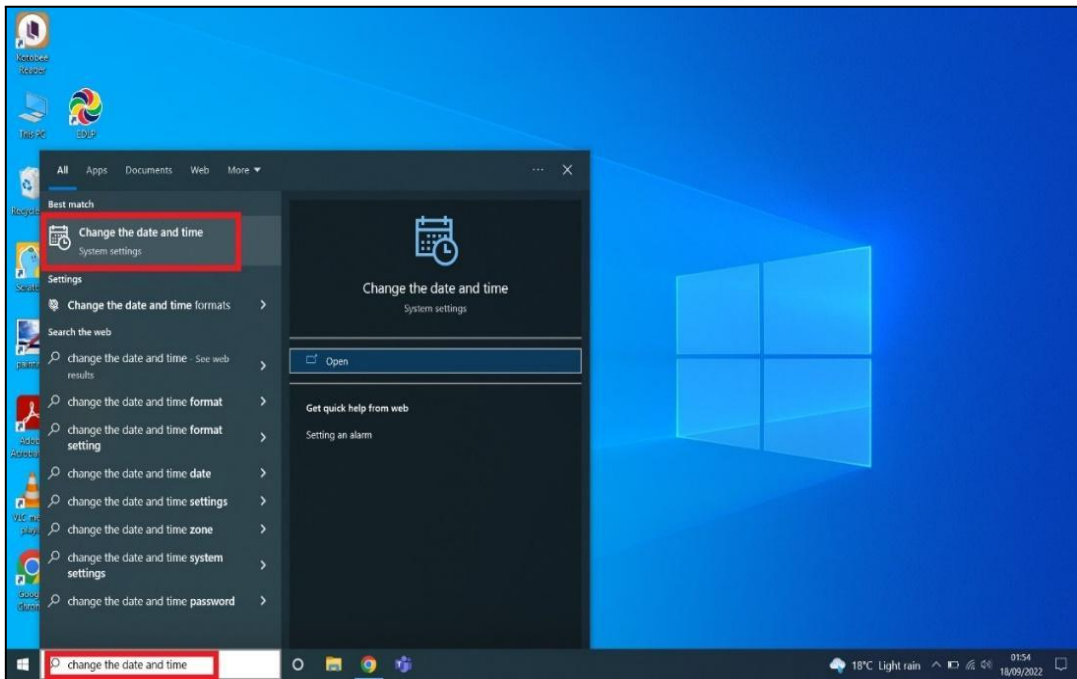
(Note: All the Laptops that are commissioned have been set to GMT+4:00 as default time.)

For setting of the Time Zone into Mauritius Time Zone, the following steps to be followed. Refer to Pic-2 & Pic-3.

Early Digital Learning Programme

WPF Update Guidance Version – 1.12.24 for Teacher Laptop

Step 2: Type “Change the date and time” in the search bar of the laptop. And select the “Change the date and time” as it appears in the search list.

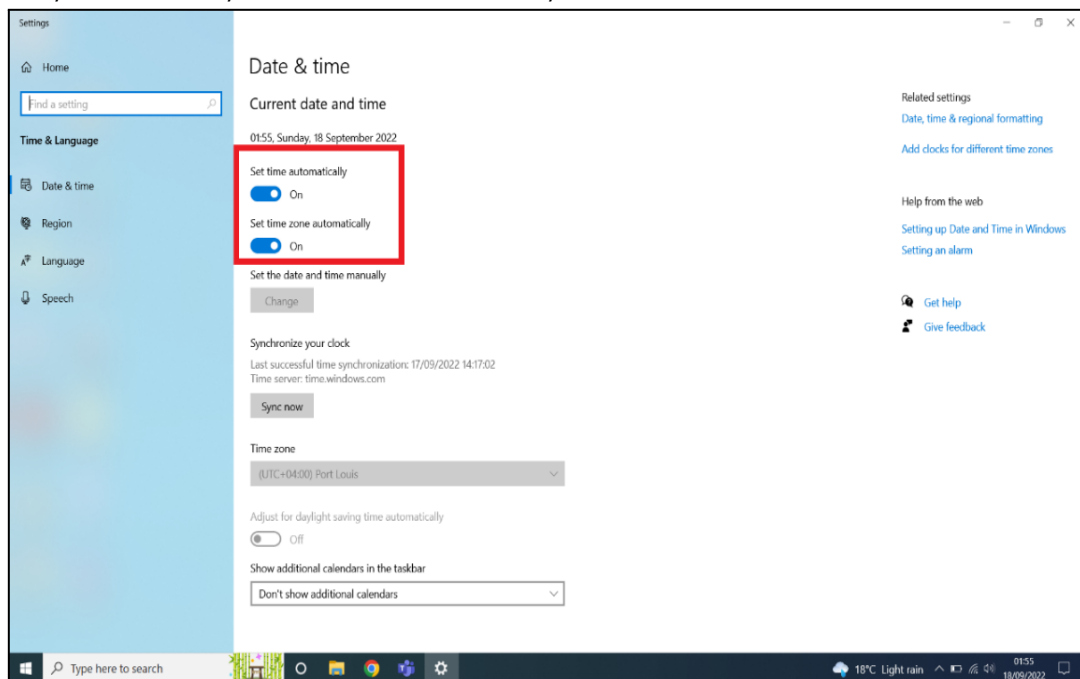


Pic-2

Connect to the internet and then follow all the steps given below

Step 3:

- a. Set time automatically to ON and Set time zone automatically to ON
Now, you will find your time automatically set to the Mauritius Time Zone.



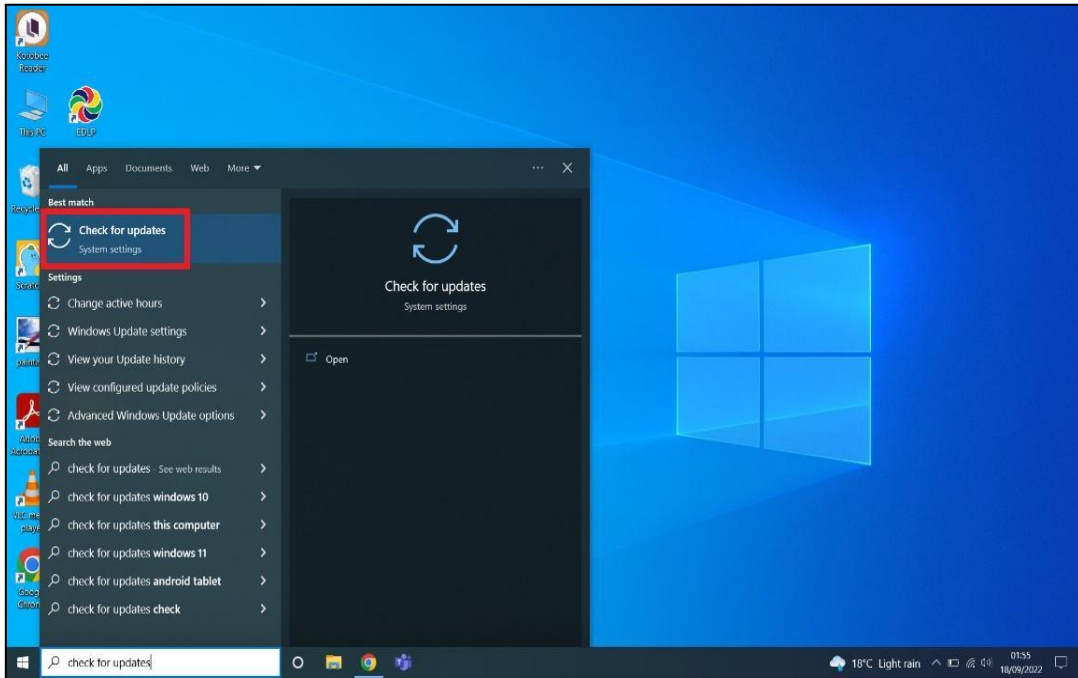
Pic-3

Early Digital Learning Programme

WPF Update Guidance Version – 1.12.24 for Teacher Laptop

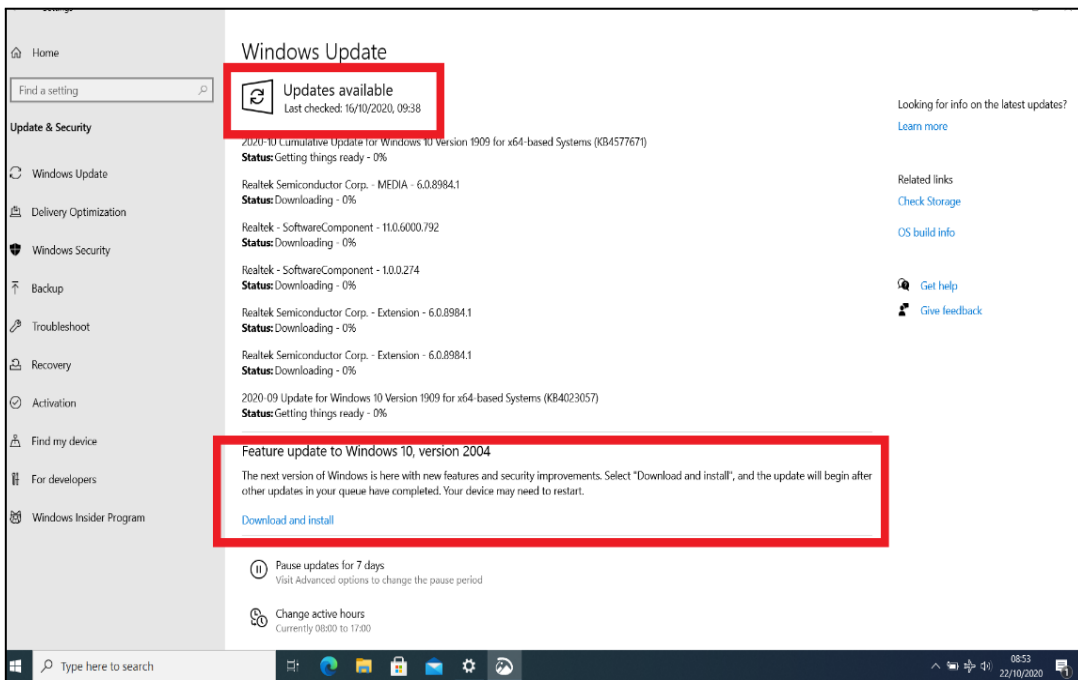
2b. Updating of the Laptop to the latest Windows Version:

Step 1: Check for Updates by typing Check for Updates in the search box.



Pic-4

Step 2: You will get below screen If there is any update available for Windows-10 and Dell Laptop Drivers, click on Download and Install to update it. Keep the Laptop in charge while updating.

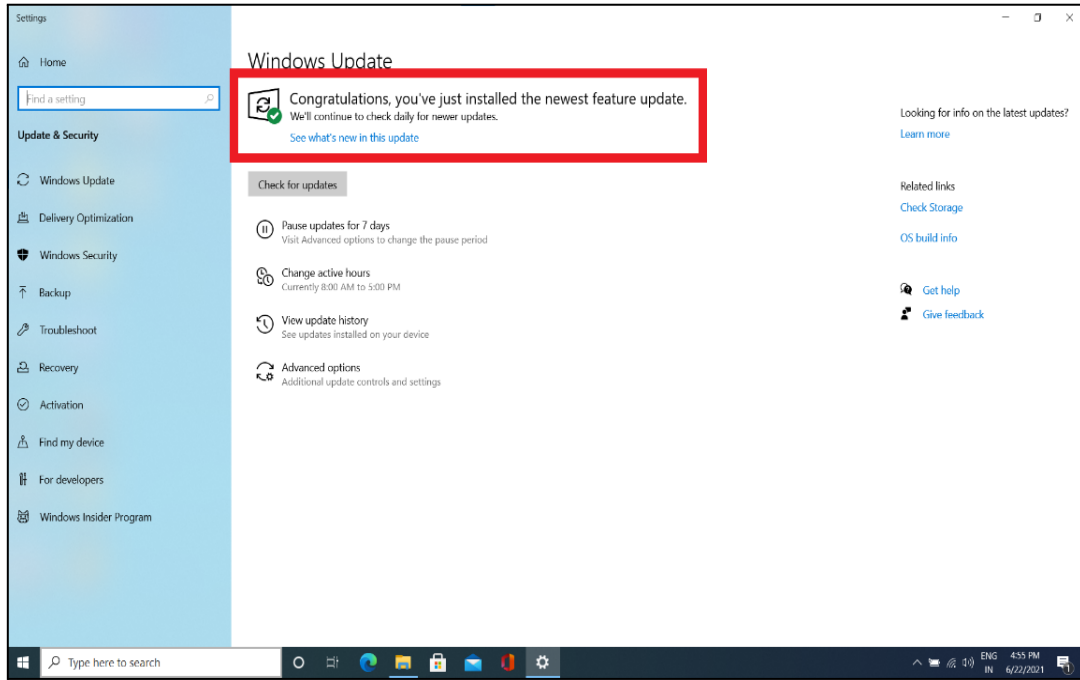


Pic-5

Early Digital Learning Programme

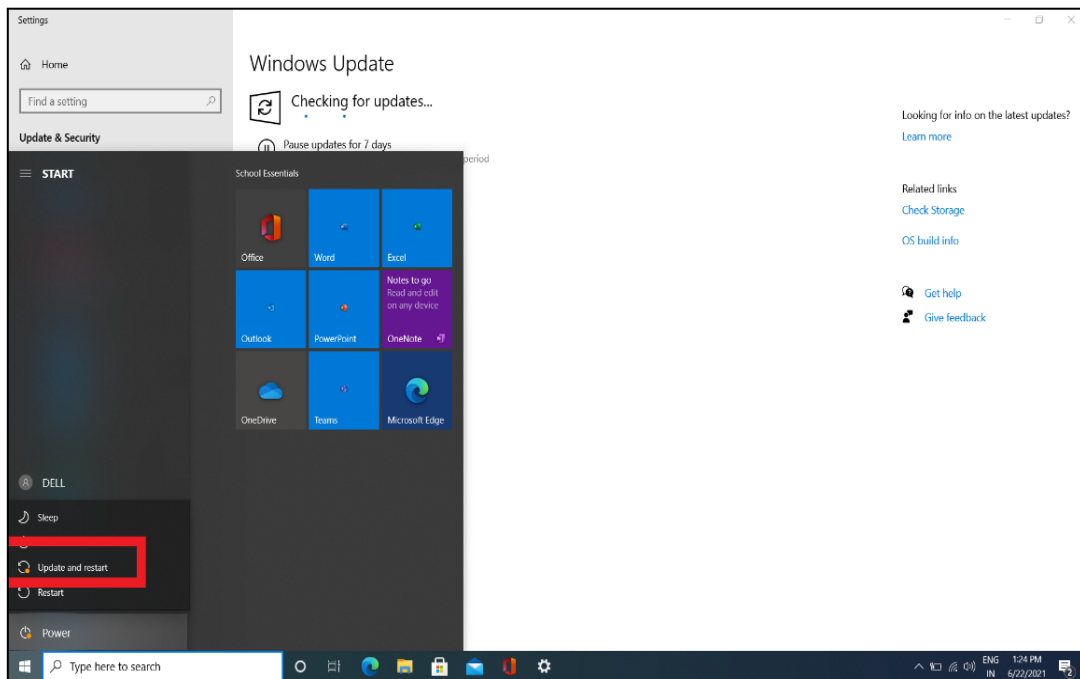
WPF Update Guidance Version – 1.12.24 for Teacher Laptop

Step 3: After Updating it completely you will get the below screen if you check for updates again.



Pic-6

Step 4: At the time of Shutting down the laptop if you get below screen as Update and Restart do it with connecting charger to laptop. Don't switch the laptop OFF or Close it while updating.

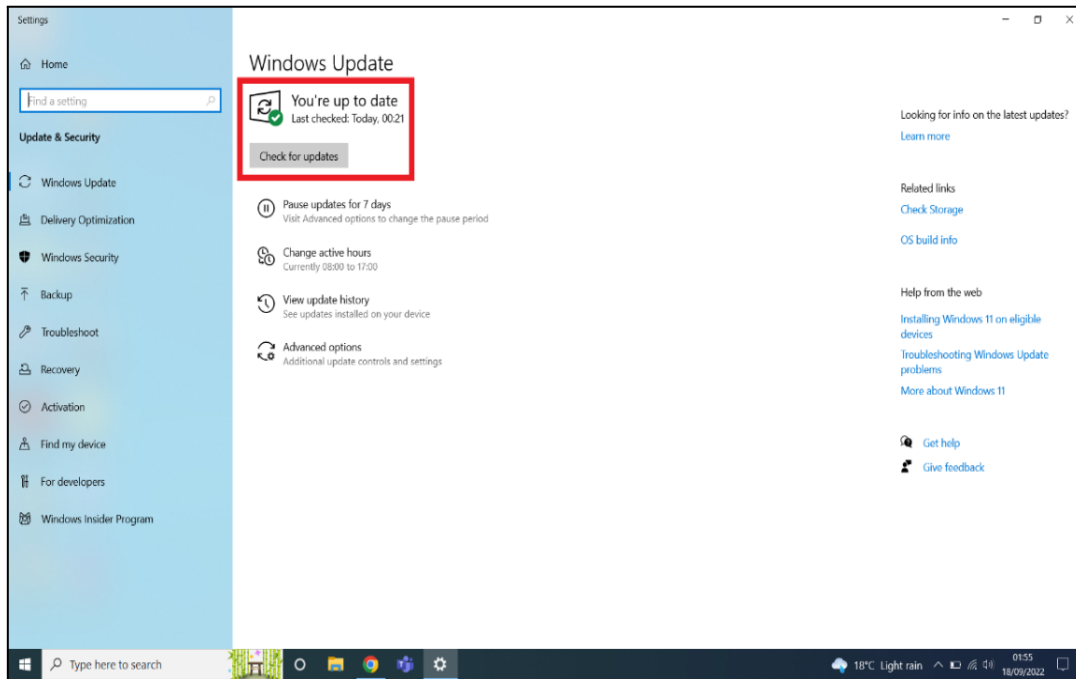


Pic-7

Early Digital Learning Programme

WPF Update Guidance Version – 1.12.24 for Teacher Laptop

Step 5: After updating and restarting the screen should look like below as 'You're up to date'.



Pic-8

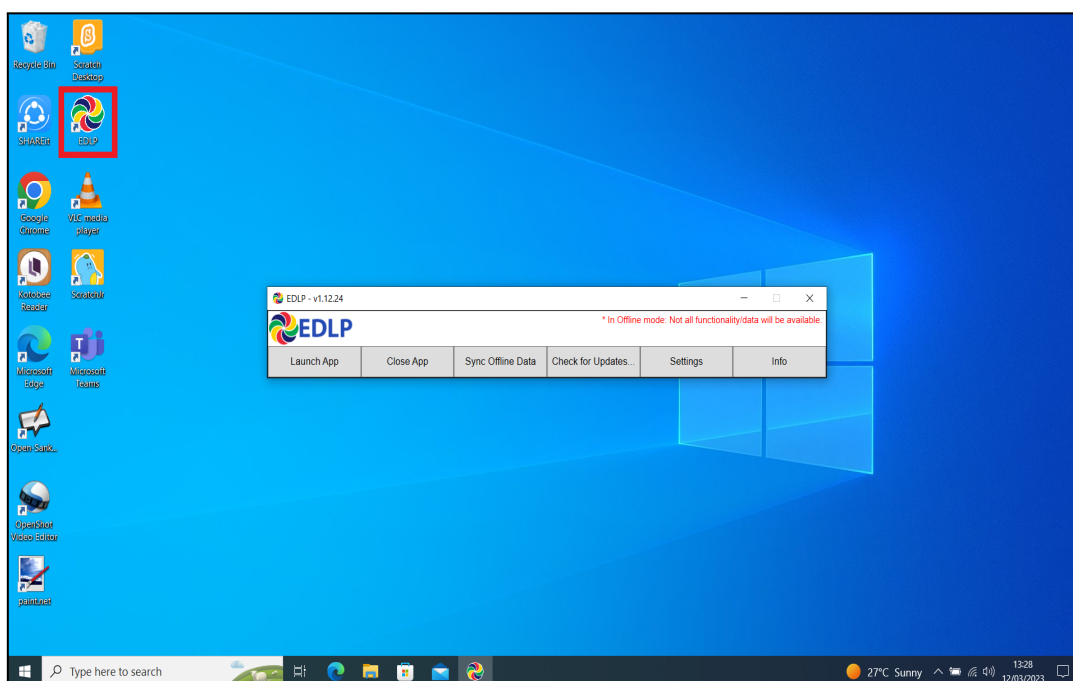
Early Digital Learning Programme
WPF Update Guidance Version – 1.12.24 for Teacher Laptop

PART – C

3. Changing the WPF application from Training Login to Teacher Login (For Ready Reference):

In case, any of the Teacher laptop is with Training login and need to change to Teacher login with School Institution code, please follow below steps.

Step 1: Click on the EDLP logo to start the application

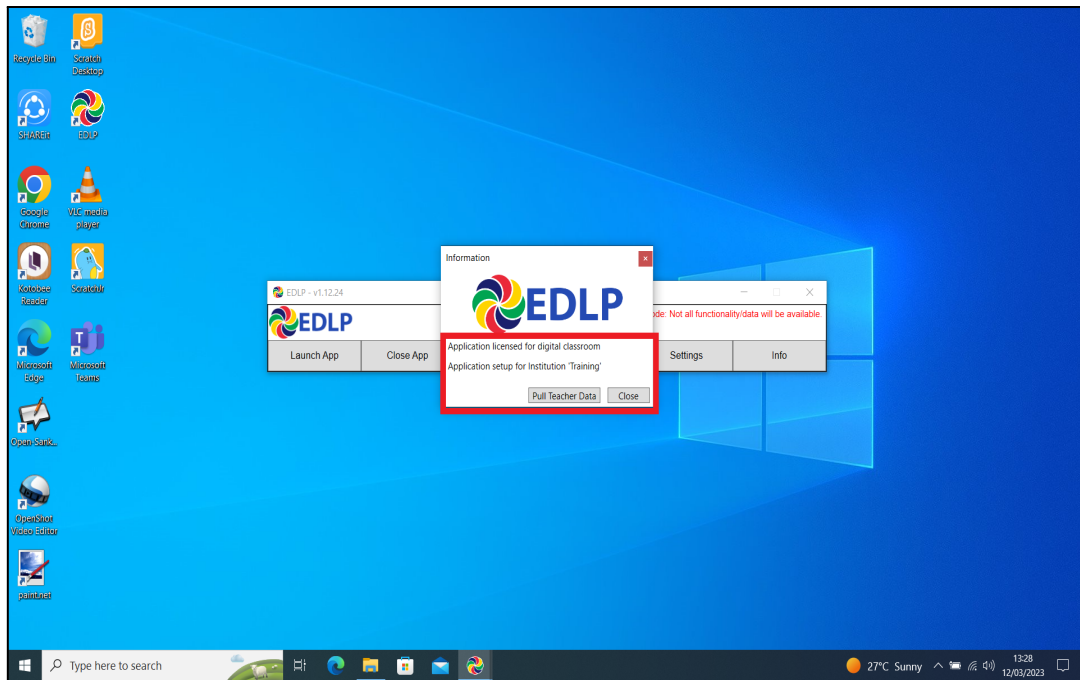


Pic-1

Step 2: Now open the application by double clicking on the EDLP icon on the desktop. And then click on the "Info". it prompts with a window pop-up as Application setup for "Institution Training".

Early Digital Learning Programme

WPF Update Guidance Version – 1.12.24 for Teacher Laptop



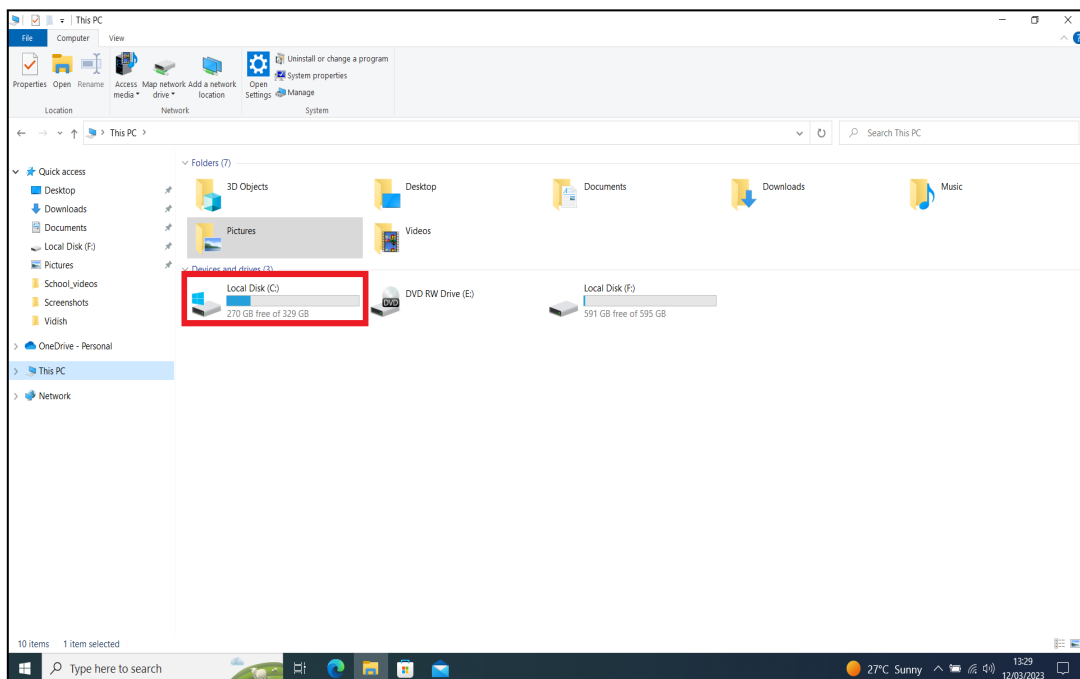
Pic-2

Step 3: Now we need to change the database file name by following the path.

- This PC: Local disk (C:): \erudex\ErudexWinApp\AppData\edlp_moemu_org
- Change the database file from "Erudex" to Erudex.Training

To change the database, follow the below pictures and steps.

Step 4: Go to This PC and double click on Local disk (C:)

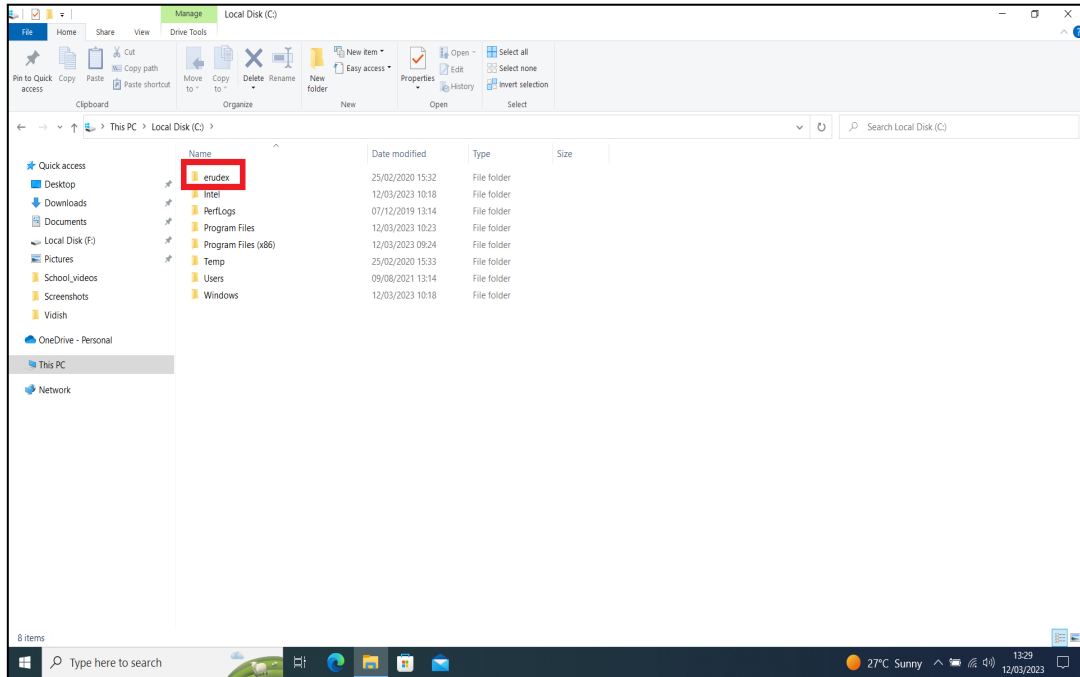


Pic-3

Early Digital Learning Programme

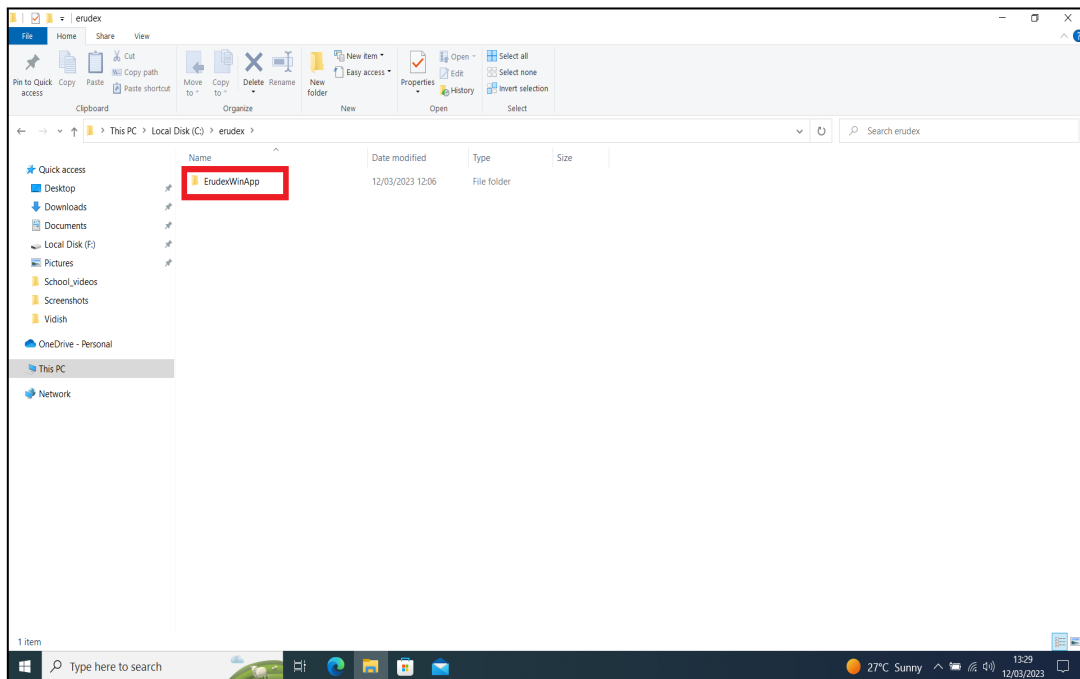
WPF Update Guidance Version – 1.12.24 for Teacher Laptop

Step 5: By clicking on Local disk (C:) you will get the list of folders, in that you should select & double click on the **erudex** folder.



Pic-4

Step 6: After opening the erudex folder you will find a folder by name **ErudexWinApp**. Now double click to open it.

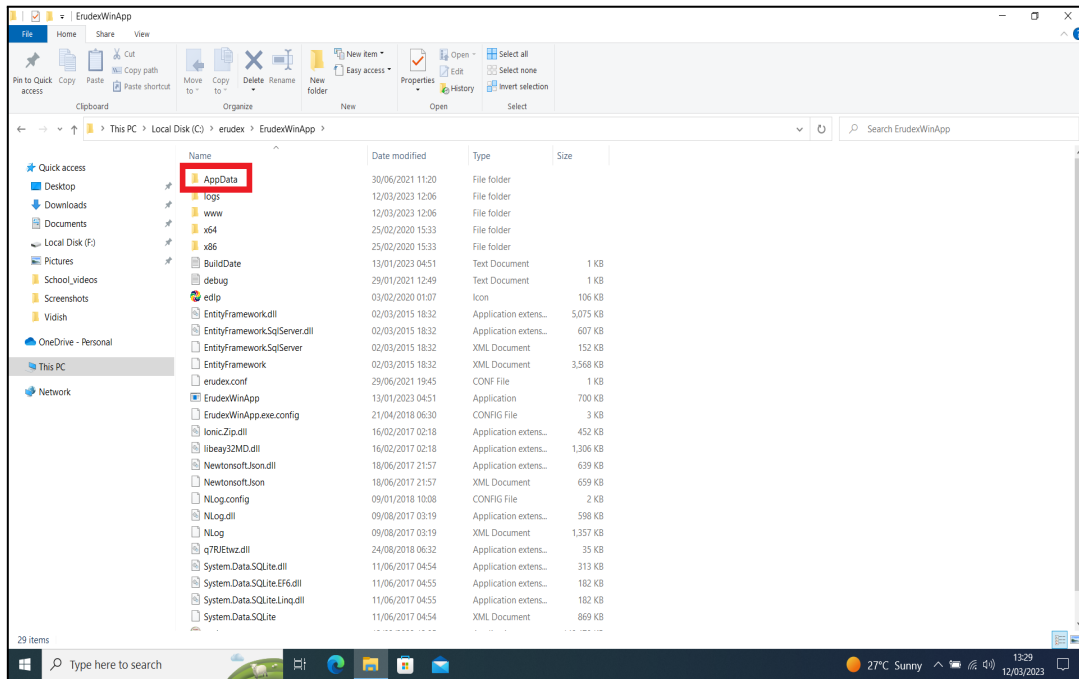


Pic-5

Early Digital Learning Programme

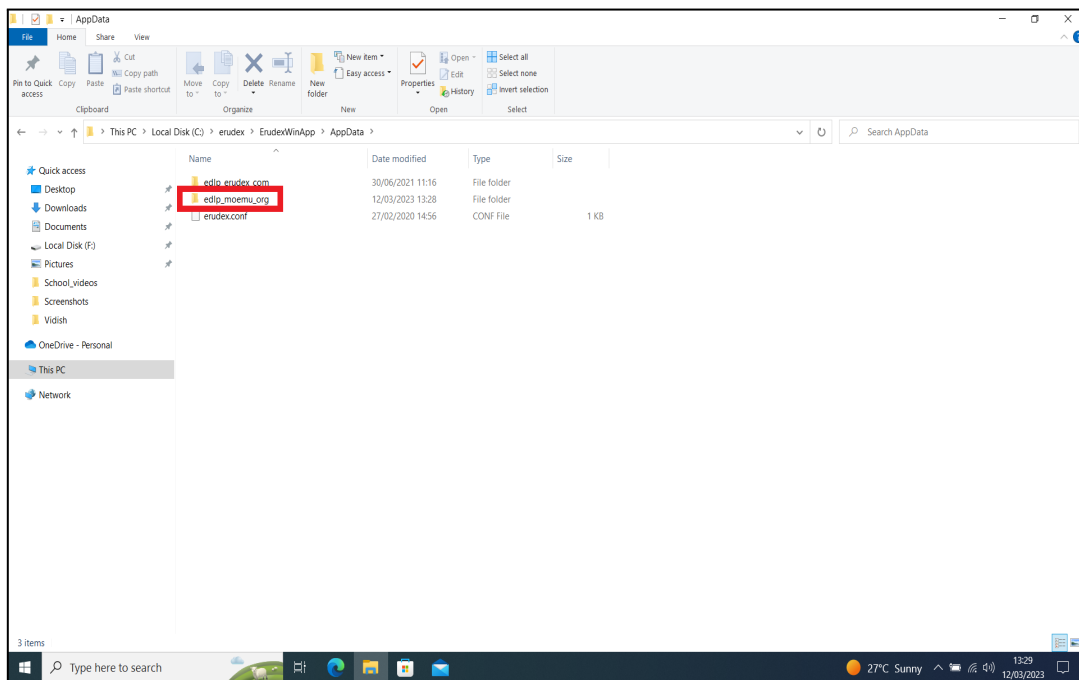
WPF Update Guidance Version – 1.12.24 for Teacher Laptop

Step 7: In the ErudexWinApp folder you should select & double click the folder by name **AppData** and open it.



Pic-6

Step 8: In the AppData folder you will find folder **edlp_moemu_org** open the folder.

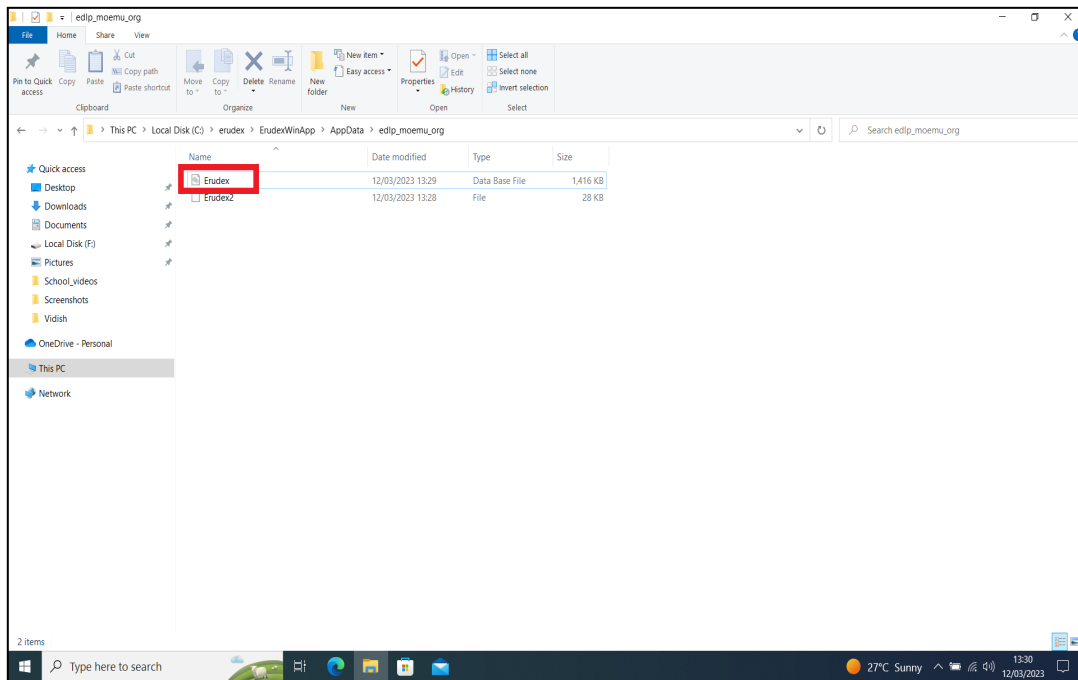


Pic-7

Early Digital Learning Programme

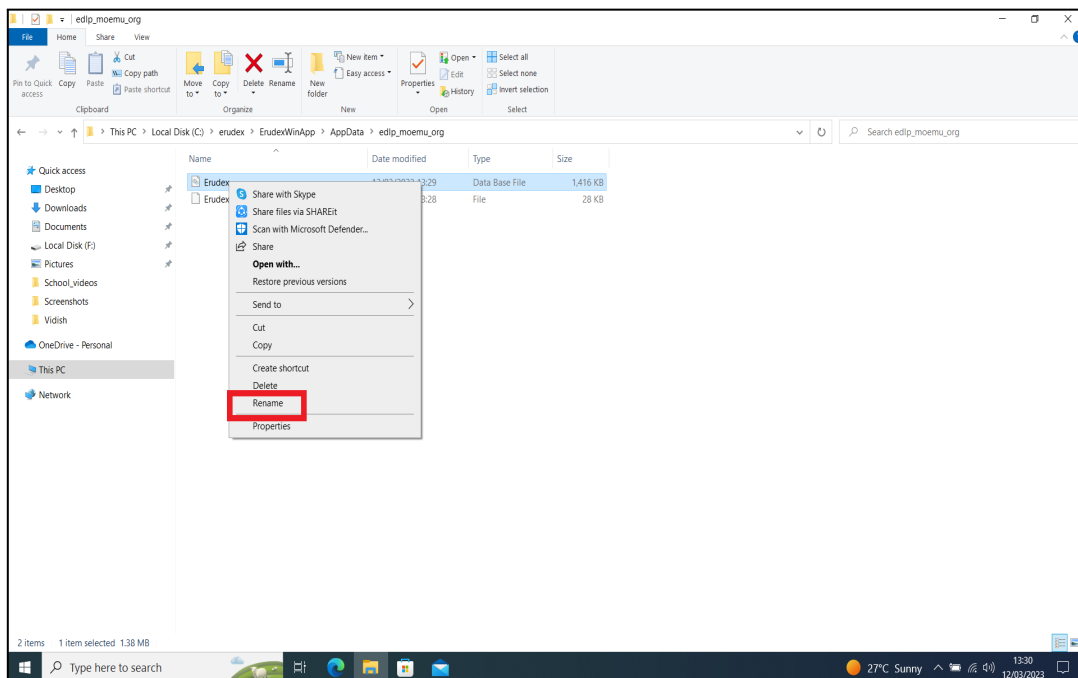
WPF Update Guidance Version – 1.12.24 for Teacher Laptop

Step 9: In the edlp_moemu_org folder you will get a database file called **Erudex** right click on the file name.



Pic-8

Step 10: After right clicking select "Rename" and change it to **Erudex.Training**

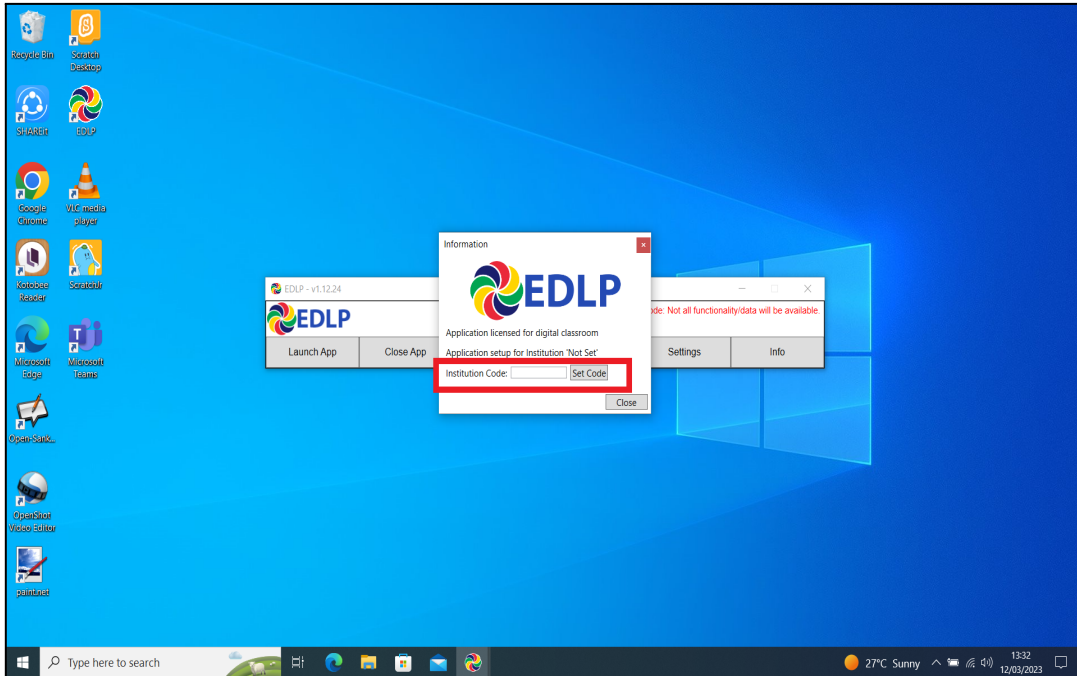


Pic-9

Early Digital Learning Programme

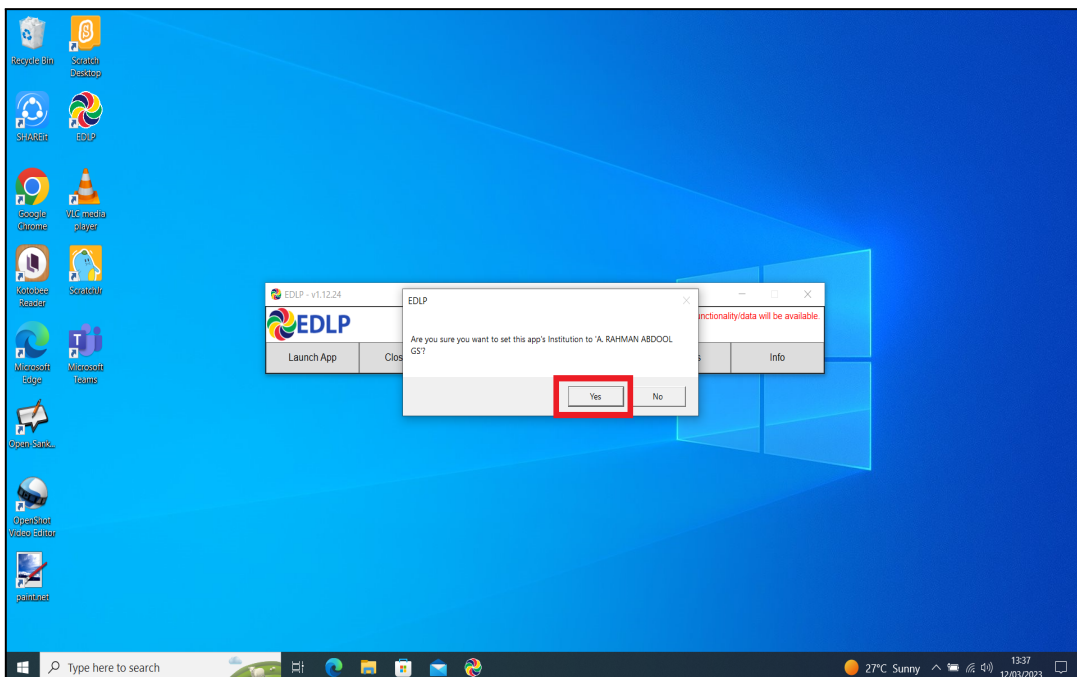
WPF Update Guidance Version – 1.12.24 for Teacher Laptop

Step 11: Now open the EDLP App and enter the **INSTITUTION CODE** provided for your school (which is provided by the Ministry along with username and password. Please note that every school has its unique Institution code) and click on set code.



Pic-10

Step 12: It displays your school's name, if it is correct, then click on "YES".

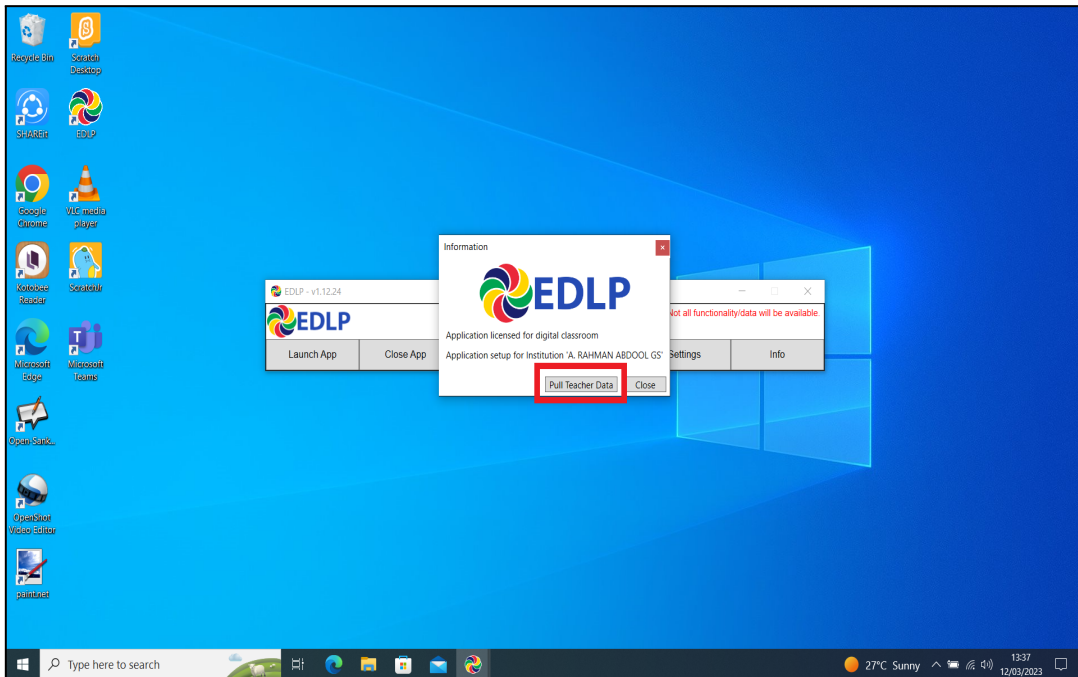


Pic-11

Early Digital Learning Programme

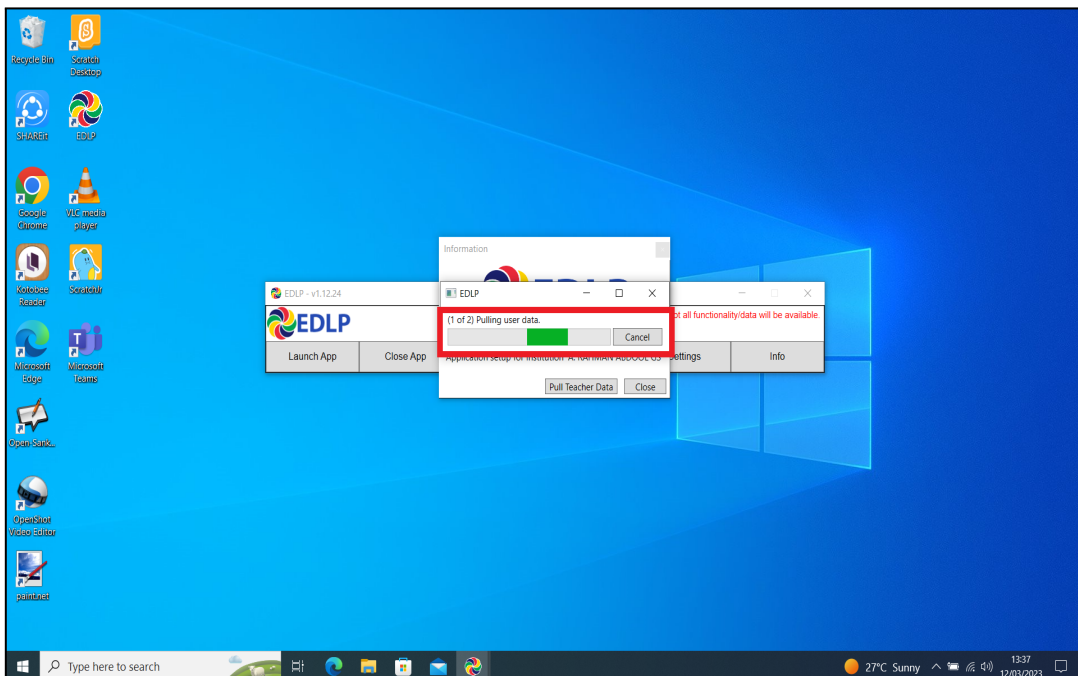
WPF Update Guidance Version – 1.12.24 for Teacher Laptop

Step 13: After entering Institution Code and clicking Yes, you will get below the window displaying to pull teacher data and then click on Pull Teacher data.



Pic-12

Step 14: It starts pulling the data of all the Teachers particular to your School.

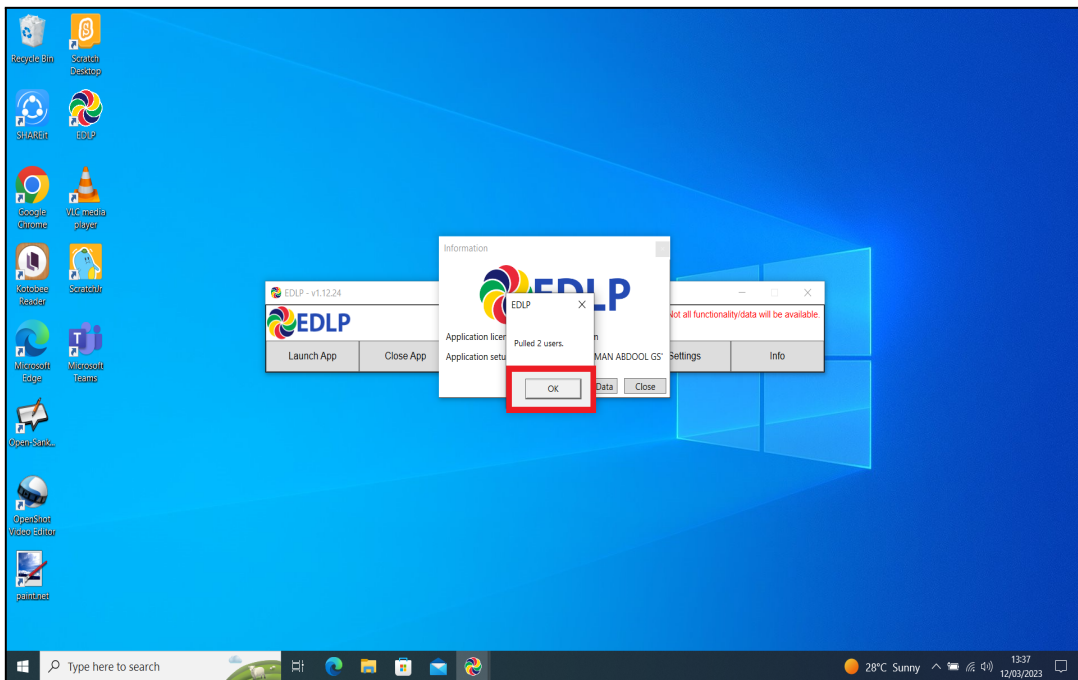


Pic-13

Early Digital Learning Programme

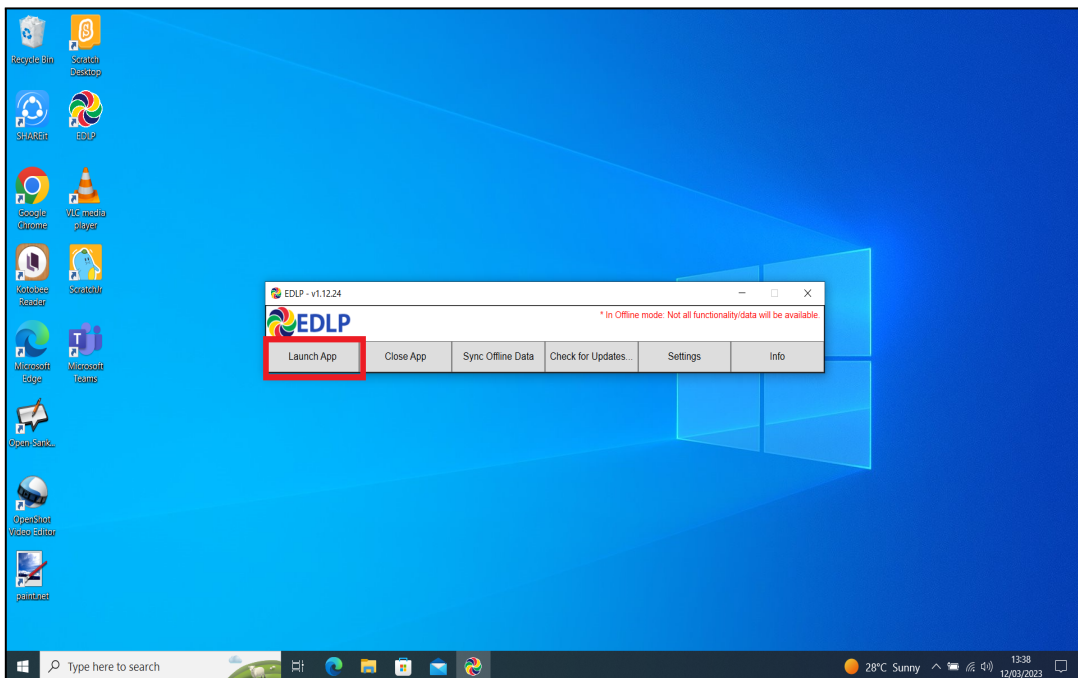
WPF Update Guidance Version – 1.12.24 for Teacher Laptop

Step 15: It displays the Teacher data pulled.



Pic-14

Step 16: Now Click on Launch app and it will take you to Chrome browser by default to use Offline Application.

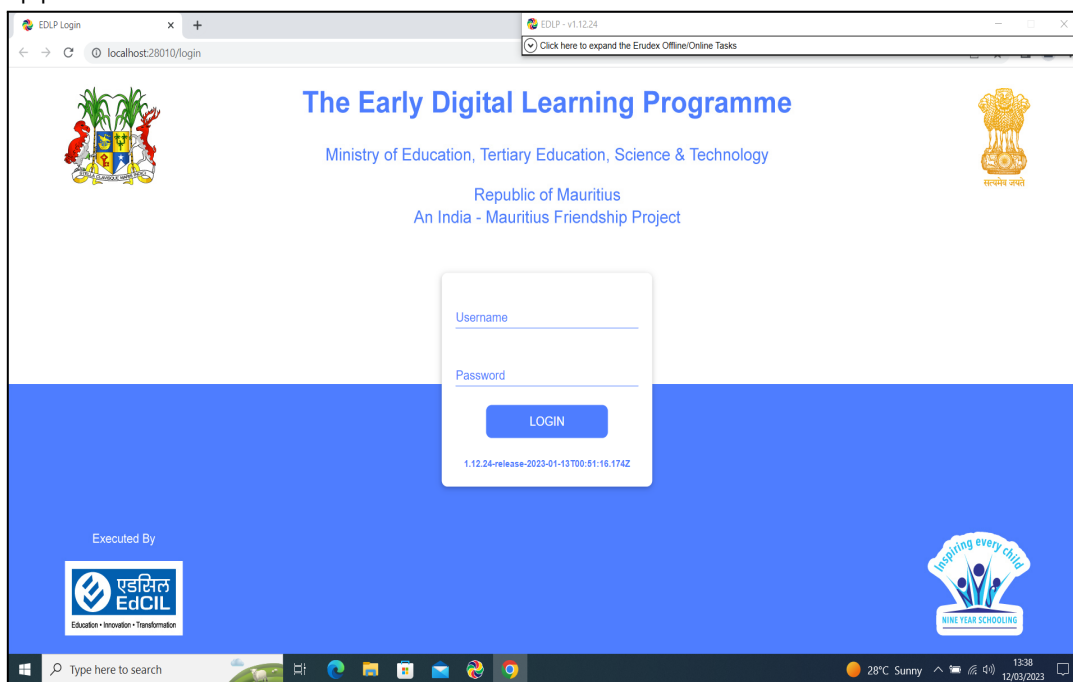


Pic-15

Early Digital Learning Programme

WPF Update Guidance Version – 1.12.24 for Teacher Laptop

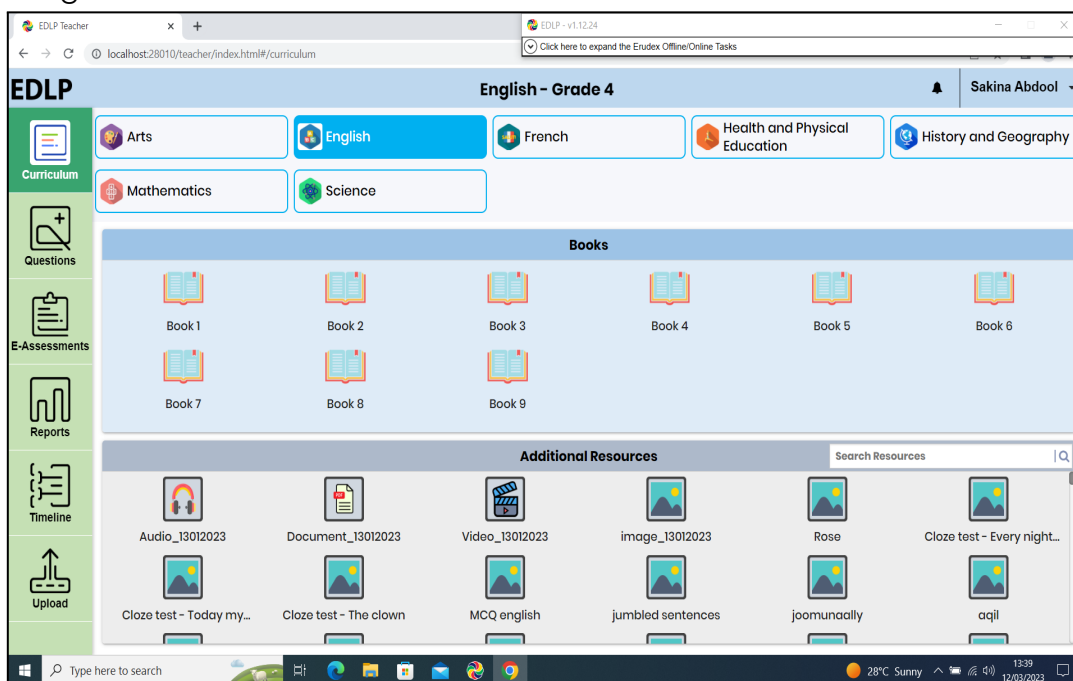
Step 17: It looks like the picture below after opening in Chrome browser and you should enter your username and password provided by the Ministry and start using the application.



Pic-16

Note: To clear old 'Cache' memory press **Ctrl+Shift+R** at a time and refresh the page at least for 2-3 times.

Step 18: After Login screen looks like this with the Teacher name on Top of the table on the right side.



Pic-17

Early Digital Learning Programme

WPF Update Guidance Version – 1.12.24 for Teacher Laptop

Further, if you want to login with Training Code from Teacher Login, please follow the process from step 3. Rename the **“Erudex” to “Erudex.Live”**

In step 10 “Rename” the **“Erudex.Training” to “Erudex”**

In step 11 enter the **TRAINING CODE -'YTc2Zml1'** provided by the Ministry along with username and password and then follow the steps.

End of The Report